

# DC-12 Dust Collector



Shown With Optional Blower

## Features & Benefits

---

- **Complete, self-contained unit:**  
Economical; immediately functional.
- **Direct-Drive or FRP Blower:**  
Higher static pressure, longer filter life and greater reliability; non-sparking; no belts or pulleys to replace.
- **Non-electrostatic operation:**  
High reliability, low maintenance.
- **Ultra-Seal® filter mounting:**  
Eliminates contaminant bypass of filters.
- **Vibra-Pulse® Filter Cleaning System:**  
Cleans filters 75% more effectively than reverse pulse systems.
- **Regulator**

## Dimensions

---

Width:	81.00"
Height:	139.00"
Depth:	45.00"

## Options

---

- **Pressure Gauge Kit:**  
Indicates when filters require cleaning.
- **Block-off cleaning:**  
Vibra-Pulse® system cleans while unit is in operation.
- **HEPA High Efficiency After-Filter:**  
Provides 99.97% filtration efficiency.
- **Adsorption Module:**  
Charcoal after-filter removes gases and odors.
- **Hopper with Floor Stand:**  
For 5-gallon pail or 55-gallon drum.

## Specifications

---

- **Construction:**  
12 ga. steel cabinet, powder coated
- **Blower Pkgs (HP):**  
5.0, 7.5, 10, 15
- **Noise Level (dBA):**  
84/76 with silencer
- **Electrical:**  
5.0 HP - 208-230/460, 12/6 amps.  
7.5 HP - 208-230/460, 17.2/8.6 amps.  
10 HP - 208-230/460, 24/12 amps.
- **Nominal CFM (in.):**  
3550/4950/6800
- **Weight (lbs.):**  
1730

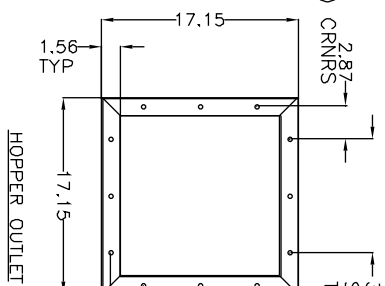
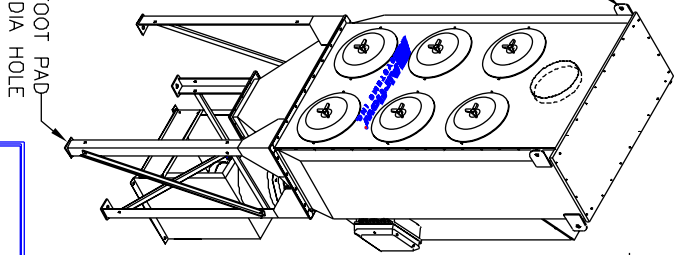
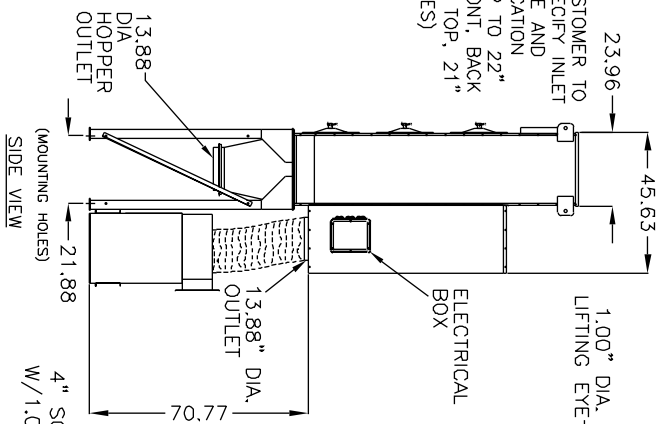
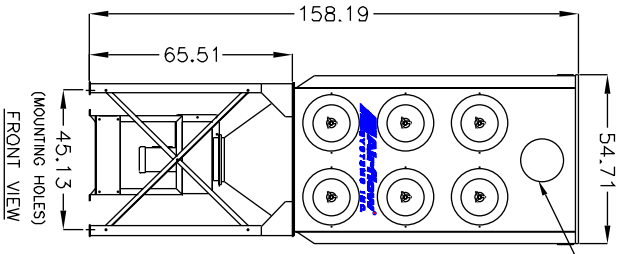
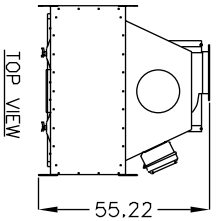


CHART "A"

MOTOR/BLOWER OPTION	dba	dba WITH SILENCER
5 HP, BI	84	75
7.5 HP, BI	84	75
10 HP	89	78

MOTOR/BLOWER OPTION	1	2	3	4	5	6	7	8	9	10
5 HP, BI	3550	3350	3075	2700	2275	1700	—	—	—	—
7.5 HP, BI	4950	4800	4550	4250	3875	3300	2500	—	—	—
10 HP, HP	5500	5375	5250	5100	4950	4750	4550	4350	4100	3850
10 HP, HF	6800	6550	6150	5950	5650	5400	4900	4400	3800	—

CUBIC FEET PER MINUTE (CFM)

**CONSTRUCTION:**  
12 Gauge steel cabinet finished with Powder-Coat Finish. Includes hopper and stand, removable endcaps for easy access to filters, pressure gauge to indicate filter changes, and automatic cleaning. Also included is a direct drive motor/blower assembly. Motor starters/disconnects NOT INCLUDED.

**WEIGHT:**  
1730 lbs.

**AIRFLOW:**  
See chart below

**NOISE:**  
See chart "A"

**ELECTRICAL:**  
 5 HP 208/230/460/3/60, 12.0/6.0 amps, BI blower, std.  
 7.5 HP 208/230/460/3/60, 17.2/8.6 amps, BI blower, opt.  
 10 HP 208/230/460/3/60, 24.0/12.0 amps, High press., opt.  
 10 HP 208/230/460/3/60, 24.0/12.0 amps, High flow, opt.

**FIRE SUPPRESSION:** Equipment provided by others.

**SPECIAL NOTES:** Compressed air filter provided by others.

**MAIN FILTERS:**
 (1/2) 16" Diameter cartridges, CLEAN 2, @ std.  
 (1/2) 16" Diameter cartridges, FiberDust @ opt.

**HEPA OPTION:**
 External HEPA filter, 99.97% (2000 CFM)  
 External HEPA filter, 99.97% (4000 CFM)

**AD OPTION:**
 (2) External adsorbers, 50 lbs., refillable, followed by a 2" poly afterfilter (2000 CFM)  
 (2) External adsorbers, 50 lbs., refillable, followed by a 2" poly afterfilter (4000 CFM)

**OTHER OPTIONS:**
 55 Gallon lid/hose  Raincap  
 Slide gate  
 50 Hz  
 575 Volt  
 Silencer  
 Explosion vent door

**NOTES:**  
ITEMS DESIGNATED AS  ARE INCLUDED IN THIS PROPOSAL.

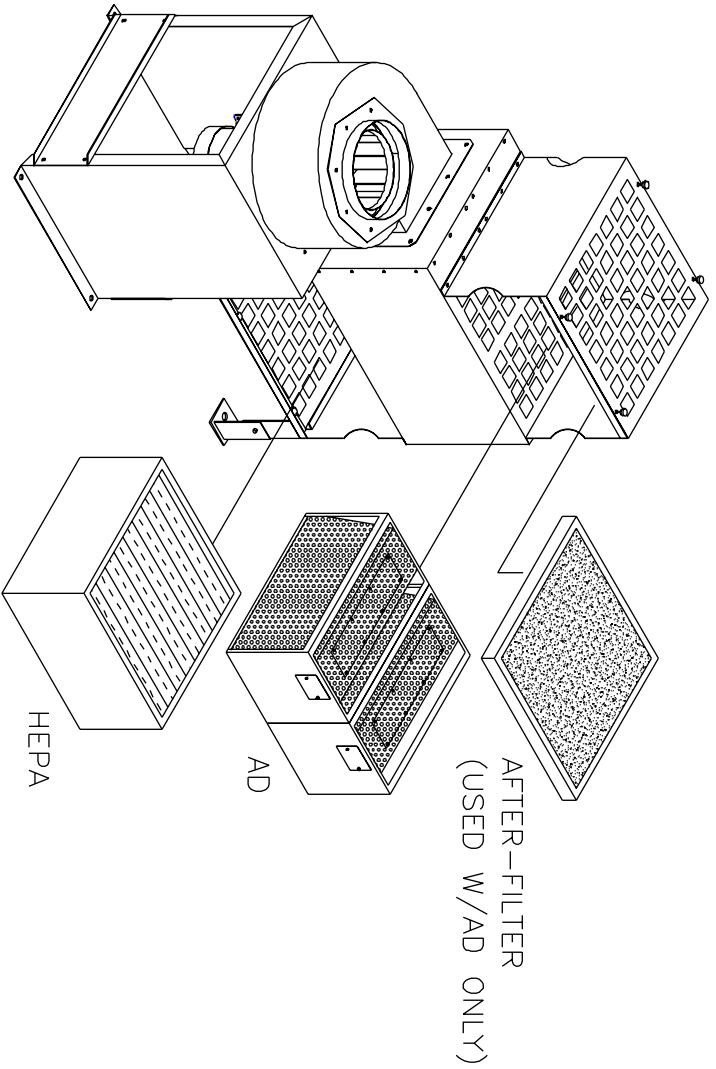
THE DEVICE DEPICTED AND DESCRIBED HEREON EMBODIES PROPRIETARY INFORMATION OWNED BY AIRFLOW SYSTEMS, INC. ALL DESIGN, MANUFACTURING, REPRODUCTION, SALES, AND PATENT RIGHTS REGARDING THIS DEVICE OR DRAWING ARE RESERVED EXCEPT WHERE EXPLICIT RIGHT IS GRANTED IN WRITING.

**Diversified Air Systems, Inc.**  
**Phone: 800-264-8958**

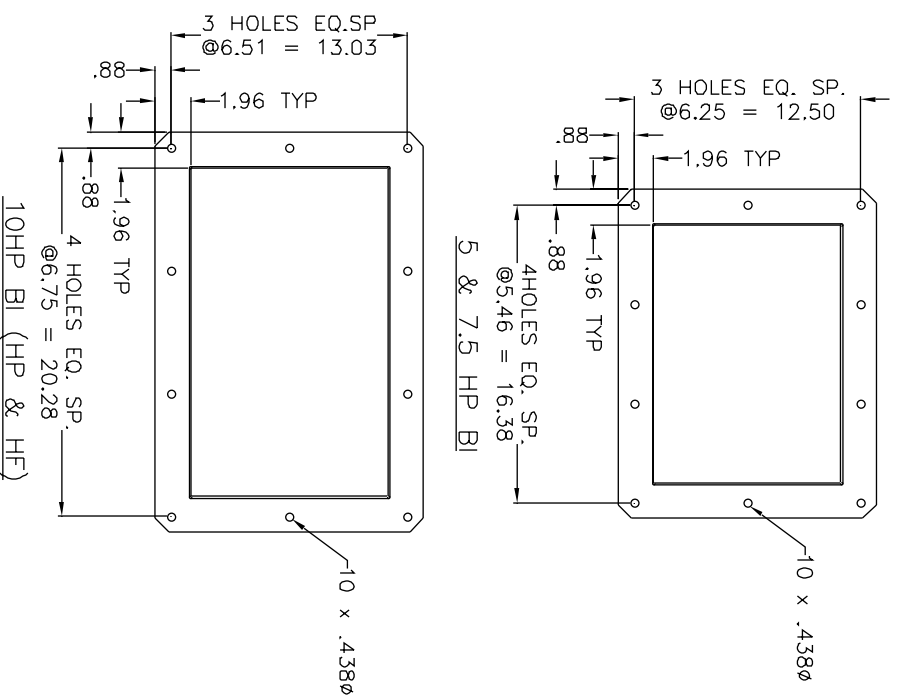
DRAWN BY: CB  
 DATE: 12-20-00  
 SCALE: NTS

TITLE: DC12 WITH HOPPER/STND  
 PAGE 1 OF 3  
 DRAWING NO.: DC12SPEC (53-3006/C)

# OPTIONAL SILENCER, HEPA/AD



# BLOWER MOUNTING HOLE PATTERN

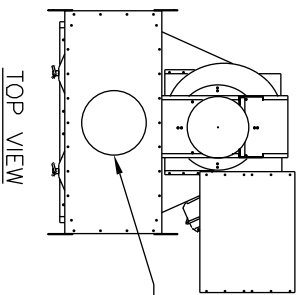
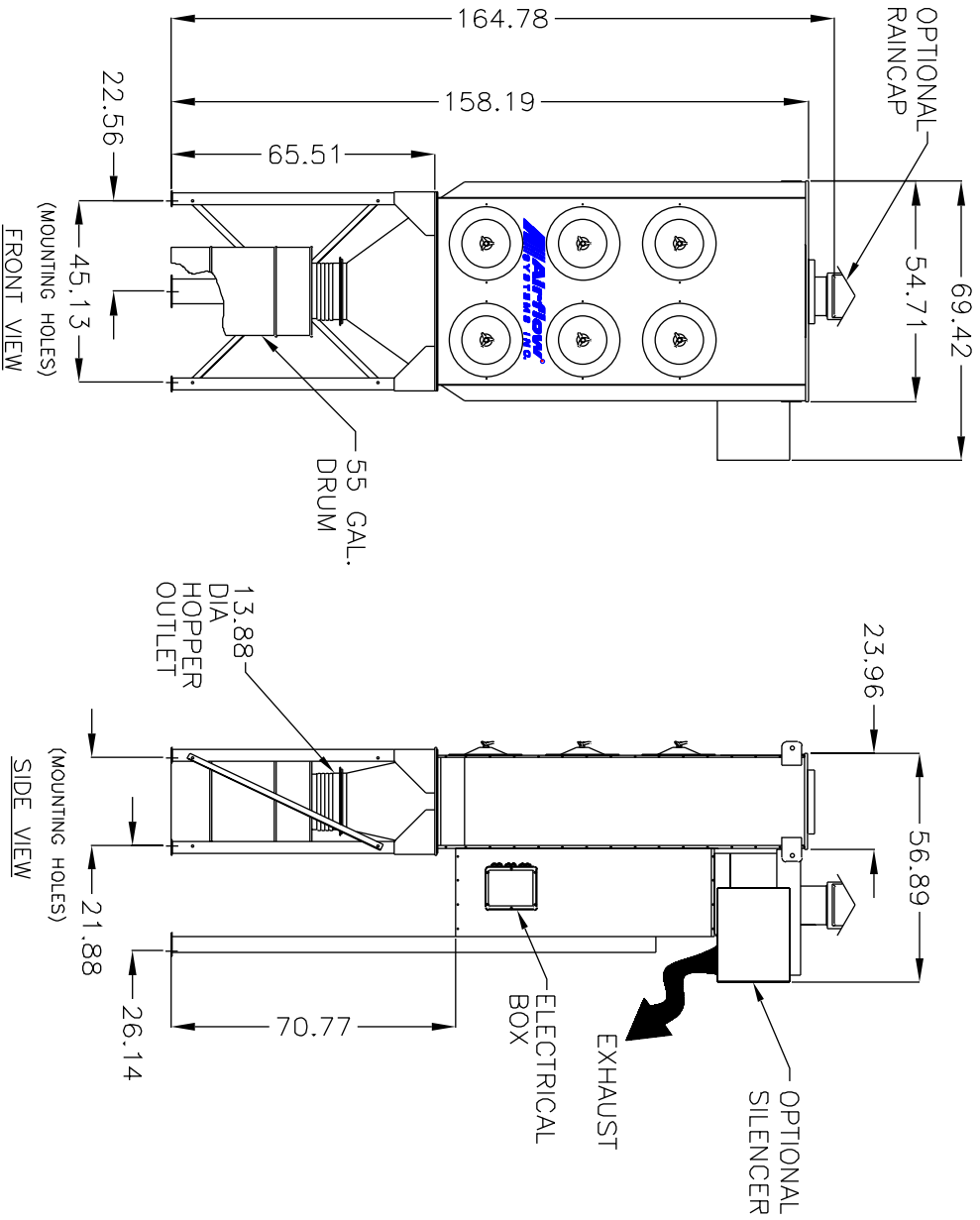


## NOTES:

THE DEVICE DEPICTED AND DESCRIBED HEREON EMBODIES PROPRIETARY INFORMATION OWNED BY AIRFLOW SYSTEMS, INC. ALL DESIGN, MANUFACTURING, REPRODUCTION, SALES, AND PATENT RIGHTS REGARDING THIS DEVICE OR DRAWING ARE RESERVED EXCEPT WHERE EXPLICIT RIGHT IS GRANTED IN WRITING.

**Diversified Air Systems, Inc.**  
**Phone: 800-264-8958**

DRAWN BY CB	TITLE DC12 WITH HOPPER/STND
DATE 12-20-00	PAGE 2 OF 3
SCALE NTS	DRAWING NO.: DC12SPEC (53-3006/C)



CUSTOMER TO SPECIFY INLET SIZE AND LOCATION (UP TO 22" FRONT, BACK OR TOP, 21" SIDES)

**NOTES:**

THE DEVICE DEPICTED AND DESCRIBED HEREON EMBODIES PROPRIETARY INFORMATION OWNED BY AIRFLOW SYSTEMS, INC. ALL DESIGN, MANUFACTURING, REPRODUCTION, SALES, AND PATENT RIGHTS REGARDING THIS DEVICE OR DRAWING ARE RESERVED EXCEPT WHERE EXPLICIT RIGHT IS GRANTED IN WRITING.

**Diversified Air Systems, Inc.**  
 Phone: 800-264-8958

DRAWN BY CB	TITLE DC12 TOP MOUNT MOTOR
DATE 12-20-00	PAGE 3 OF 3
SCALE NTS	DRAWING NO.: DC12SPEC (53-3006/C)