

DC-6 Dust Collector



Shown With Optional Floor Stand

Dimensions

Width:	41.00"
Height:	139.00" (stand/hopper)
Depth:	45.00"

Options

- **Pressure Gauge Kit:**
Indicates when filters require cleaning.
- **Block-off Filter cleaning:**
Vibra-Pulse® system cleans while unit is in operation.
- **HEPA High Efficiency After-Filter:**
Provides 99.97% filtration efficiency.
- **Absorption Module:**
Charcoal after-filter removes gases and odors.
- **Hopper with Floor Stand:**
For 5-gallon pail or 55-gallon drum.
- **Dust Drawer Kit**

Features & Benefits

- **Complete, self-contained unit:**
Economical; immediately functional.
- **Direct-Drive or FRP Blower:**
Higher static pressure, longer filter life and greater reliability; non-sparking; no belts or pulleys to replace.
- **Non-electrostatic operation:**
High reliability, low maintenance.
- **Ultra-Seal® filter mounting:**
Eliminates contaminant bypass of filters.
- **Vibra-Pulse® Filter Cleaning System:**
Cleans filters 75% more effectively than reverse pulse systems.
- **Regulator**

Specifications

Construction:

12 ga. steel cabinet, powder coated

Blower Pkgs (HP):

3.0, 5.0

Noise Level (dBA):

79

Electrical

3.0 HP - 208/230/460/575V/3/60, 6/4 amps

190/380/3/50, 11.3/5.65

5.0 HP - 208/230/460/575/3/60, 12.6

190/380/3/50, 15.8/7.9

Nominal CFM (in.):

1650/3450

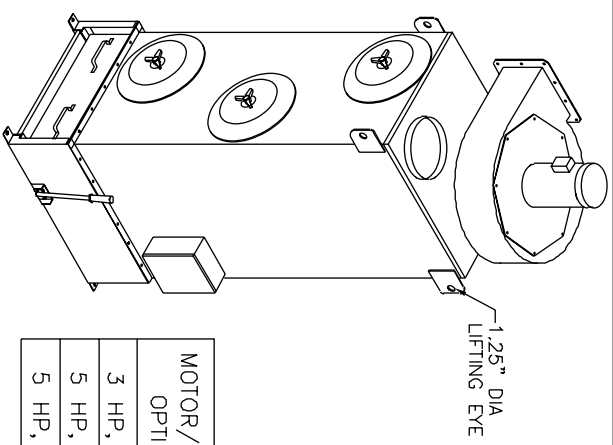
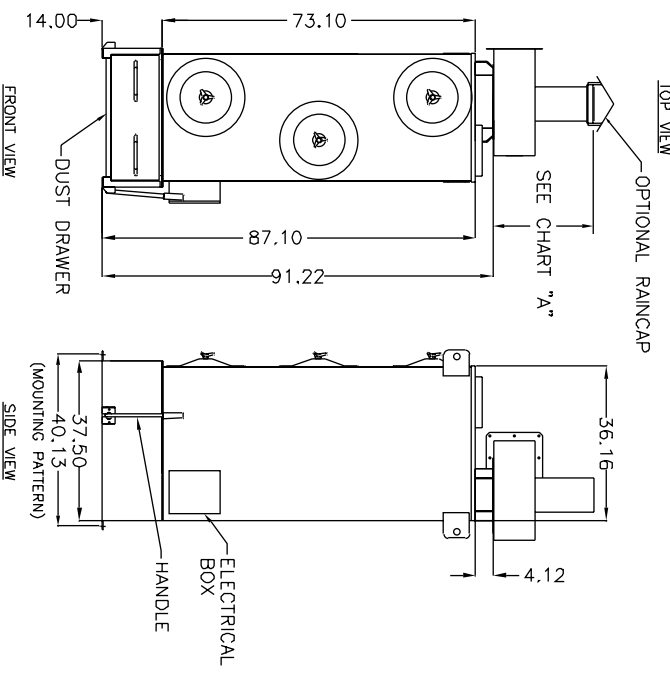
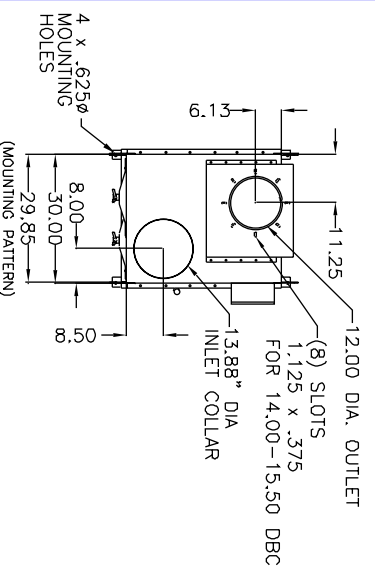
Weight (lbs.):

743

Diversified Air Systems, Inc.

Phone: 800-264-8958

Email: info@divers-air.comwww.divers-air.com



MOTOR/BLOWER OPTION	1	2	3	4	5	6	7	8	9
3 HP, RADIAL	1650	1600	1550	1450	1370	1180	910	605	—
5 HP, RADIAL	2000	1950	1875	1750	1600	1450	1300	1125	925
5 HP, BI	3450	3250	3000	2650	2250	1700	—	—	—

MOTOR/BLOWER OPTIONS	MTR/BLWR HEIGHT	DBA WITH SILENCER
3 HP, RADIAL	15.00"	90
5 HP, RADIAL	19.50"	95
5 HP, BI	23.38"	84
		75

CHART A

CONSTRUCTION: 12 Gauge steel cabinet finished with a 2 part chemical and oil resistant paint. Includes removable endcaps for easy access to filters, dust drawer, 6" legs, pressure gauge to indicate filter changes, and automatic cleaning. Also included is a direct drive radial motor/blower assembly. Motor starters/disconnects NOT INCLUDED.

WEIGHT: 743 lbs.

AIRFLOW: See Chart Below

NOISE: See chart "A"

ELECTRICAL: 3 HP 208-230/460/3/60, 8.0/4.0 amps, radial blower, std.
 5 HP 208-230/460/3/60, 12.0/6.0 amps, radial blower, opt.
 5 HP 208-230/460/3/60, 12.0/6.0 amps, BI blower, opt.

FIRE SUPPRESSION EQUIPMENT: Provided by others.

SPECIAL NOTES: Compressed air filter provided by others.

MAIN FILTERS: (6) 16" Cartridge, CLEAN 2, [®] std.
 (6) 16" Cartridge, Fiber Dust, [®] opt.

HEPA OPTION: External HEPA filter, 99.97%
 (2) External adsorbents, 50 lbs., refillable, followed by a 2" poly afterfilter

AD OPTION: External adsorbents, 50 lbs., refillable, followed by a 2" poly afterfilter

OTHER OPTIONS: Casters
 50 Hz
 575 Volt
 Single phase
 Silencer
 Raincap

* AFS FILTER EFFICIENCIES BASED ON ASHRAE 52-76 TEST METHOD

SPECIFICATIONS:

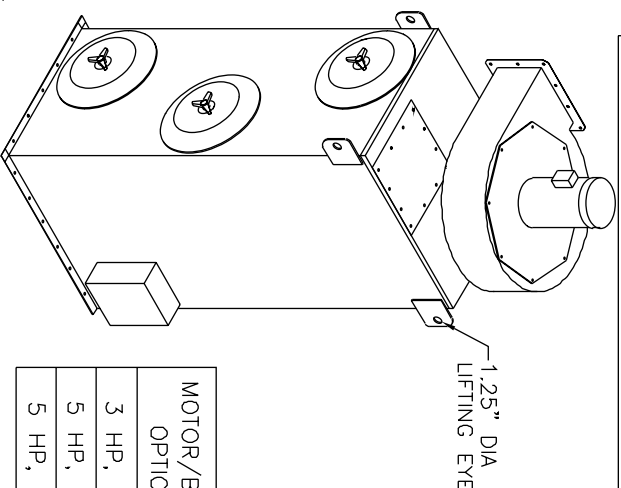
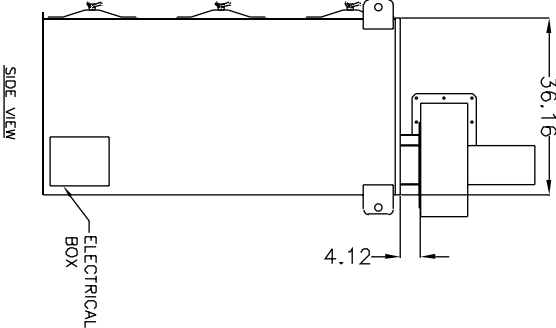
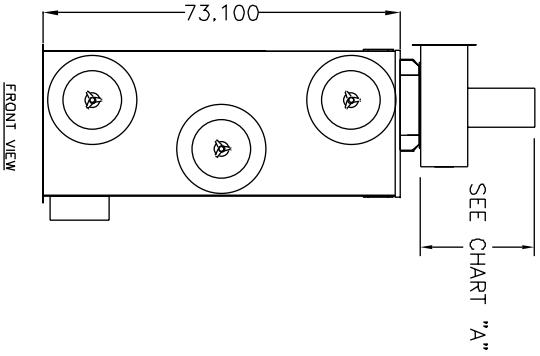
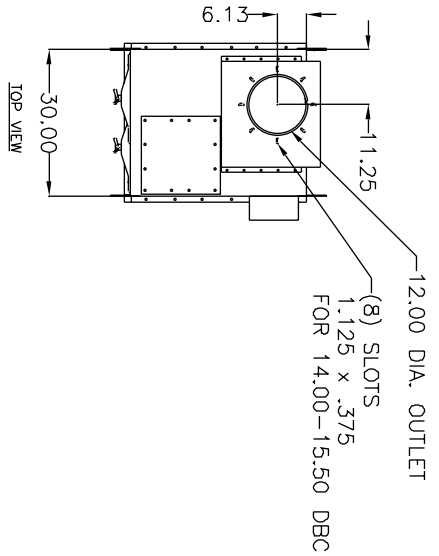
NOTES:
 ITEMS DESIGNATED AS ARE INCLUDED IN THIS PROPOSAL.

THE DEVICE DEPICTED AND DESCRIBED HEREON EMBODIES PROPRIETARY INFORMATION OWNED BY AIRFLOW SYSTEMS, INC. ALL DESIGN, MANUFACTURING, REPRODUCTION, SALES, AND PATENT RIGHTS REGARDING THIS DEVICE OR DRAWING ARE RESERVED EXCEPT WHERE EXPLICIT RIGHT IS GRANTED IN WRITING.

Diversified Air Systems, Inc.
 Phone: 800-264-8958

DRAWN BY: CB
 DATE: 11-1-00
 SCALE: —

TITLE: DC-6 STANDARD UNIT
 (PAGE 1 OF 5)
 DRAWING NO.: DC6SPEC (05-2915/F)



CONSTRUCTION: 12 Gauge steel cabinet finished with a 2 part chemical and oil resistant paint. Includes removable endcaps for easy access to filters, pressure gauge to indicate filter changes, and automatic cleaning. Also included is a direct drive radial motor/blower assembly. Motor starters/discos not INCLUDED.

WEIGHT: 699 lbs.

AIRFLOW: See chart below

NOISE: See chart "A"

ELECTRICAL:

- 3 HP 208-230/460/3/60, 8.0/4.0 amps, radial blower, std.
- 5 HP 208-230/460/3/60, 12.0/6.0 amps, radial blower, opt.
- 5 HP 208-230/460/3/60, 12.0/6.0 amps, BI blower, opt.

FIRE SUPPRESSION EQUIPMENT: Provided by others.

SPECIAL NOTES: Compressed air filter provided by others.

SPECIFICATIONS:

MAIN FILTERS: (6) 16" Cartridge, CLEAN 2.0 std., (6) 16" Cartridge, Fiber Dust. opt.

HEPA OPTION: External HEPA filter, 99.97%

AD OPTION: (2) External adsorbers, 50 lbs., refillable, followed by a 2" poly offertfilter

OTHER OPTIONS:

- 50 Hz
- 575 Volt
- Single phase
- Silencer
- Ramscop

• AFS FILTER EFFICIENCIES BASED ON ASHRAE 52-76 TEST METHOD

CHART A

MOTOR/BLOWER OPTIONS	MTR/BLWR HEIGHT	DBA	DBA WITH SILENCER
3 HP, RADIAL	15.00"	90	78
5 HP, RADIAL	19.50"	95	80
5 HP, BI	23.38"	84	75

MOTOR/BLOWER OPTION	1	2	3	4	5	6	7	8	9
3 HP, RADIAL	1650	1600	1550	1450	1370	1180	910	605	—
5 HP, RADIAL	2000	1950	1875	1750	1600	1450	1300	1125	925
5 HP, BI	3450	3250	3000	2650	2250	1700	—	—	—

CUBIC FEET PER MINUTE (CFM)

NOTES:

ITEMS DESIGNATED AS ARE INCLUDED IN THIS PROPOSAL

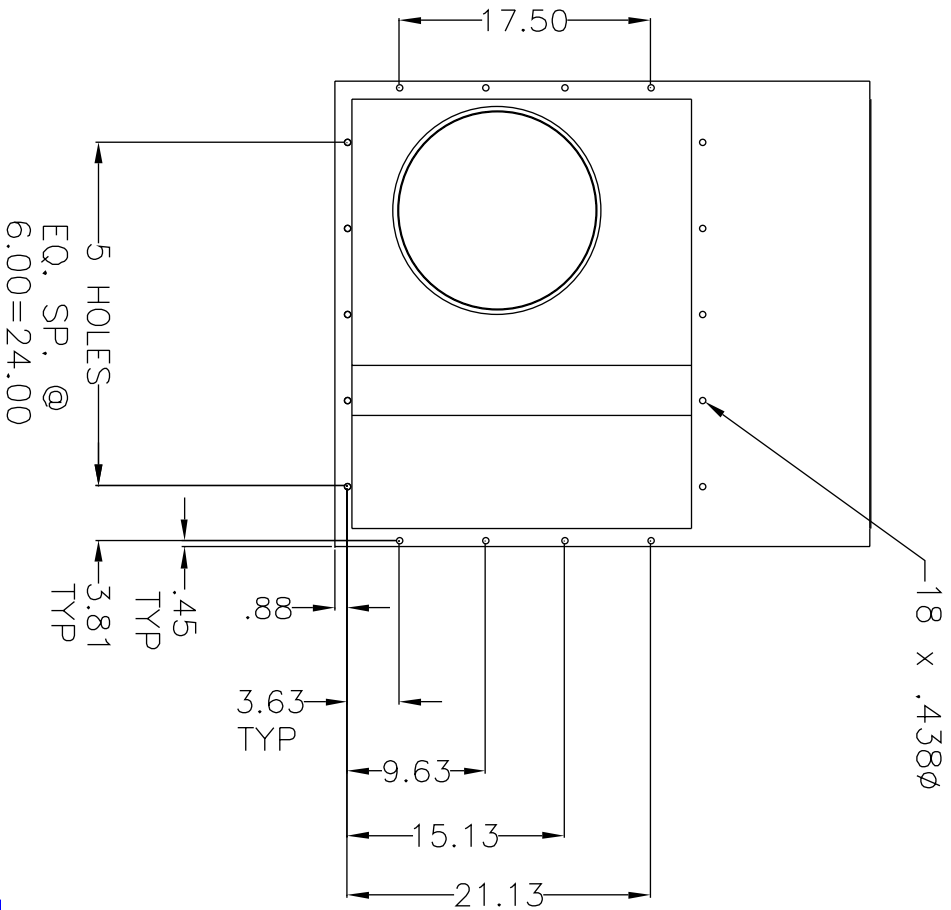
SEE PAGE 3 FOR BIN MOUNTING HOLE PATTERN

THE DEVICE DEPICTED AND DESCRIBED HEREON EMBODIES PROPRIETARY INFORMATION OWNED BY AIRFLOW SYSTEMS, INC. ALL DESIGN, MANUFACTURING, REPRODUCTION, SALES, AND PATENT RIGHTS REGARDING THIS DEVICE OR DRAWING ARE RESERVED EXCEPT WHERE EXPLICIT RIGHT IS GRANTED IN WRITING.

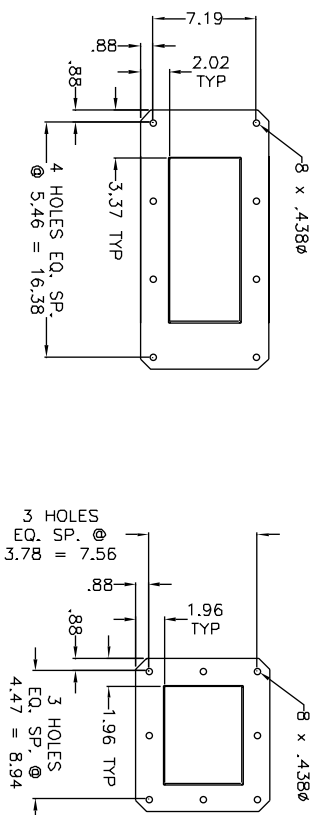
Diversified Air Systems, Inc.
Phone: 800-264-8958

DRAWN BY CB	TITLE DC-6 BIN VENT
DATE 11-1-00	(PAGE 2 OF 5)
SCALE	DRAWING NO.: DC6SPEC (05-2915/F)

BIN MOUNTING HOLE PATTERN

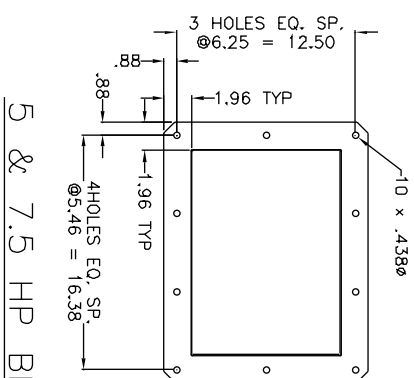


BLOWER MOUNTING HOLE PATTERN



3 HP RADIAL

5 HP RADIAL



5 & 7.5 HP BI

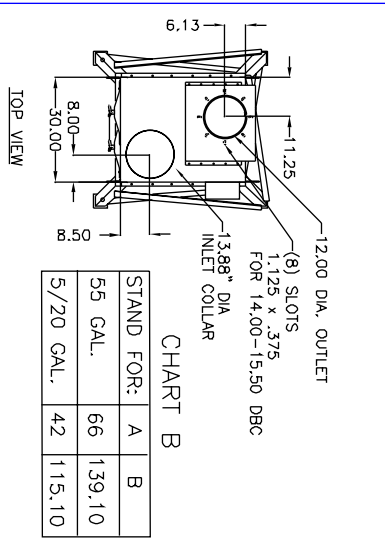
NOTES:

BOTTOM VIEW

THE DEVICE DEPICTED AND DESCRIBED
HEREON EMBODIES PROPRIETARY
INFORMATION OWNED BY AIRFLOW SYSTEMS,
INC. ALL DESIGN, MANUFACTURING,
REPRODUCTION, SALES, AND PATENT RIGHTS
REGARDING THIS DEVICE OR DRAWING ARE
RESERVED EXCEPT WHERE EXPLICIT RIGHT
IS GRANTED IN WRITING.

Diversified Air Systems, Inc.
Phone: 800-264-8958

DRAWN BY CB	TITLE DC6 BIN & BLWR MNTING PTRN (PAGE 3 OF 5)
DATE 11-1-00	DRAWING NO.: DC6SPEC (05-2915/F)
SCALE	



CONSTRUCTION: 12 Gauge steel cabinet finished with a 2 part chemical and oil resistant paint. Includes hopper with a 2 part removable endcaps for easy access to filters, pressure gauge to indicate filter changes, and automatic cleaning. Also included is a direct drive radial motor/blower assembly. Motor starters/disconnects NOT INCLUDED.

WEIGHT: 783 lbs.

AIRFLOW: See chart below

NOISE: See chart "A"

ELECTRICAL:

- 3 HP 208-230/460/3/60, 8.0/4.0 amps, radial blower, std.
- 5 HP 208-230/460/3/60, 12.0/6.0 amps, radial blower, opt.
- 5 HP 208-230/460/3/60, 12.0/6.0 amps, BI blower, opt.
- 7.5 HP 208-230/460/3/60, 17.2/8.6 amps, BI blower, opt.

FIRE SUPPRESSION EQUIPMENT: Provided by others.

SPECIAL NOTES: Compressed air filter provided by others.

SPECIFICATIONS:

MAIN FILTERS:

- (6) 16" Cartridge, CLEAN 2, ^(R) std.
- (6) 16" Cartridge, Fiber Dust, ^(R) opt.

HEPA OPTION:

- External HEPA filter, 99.97% (2000 CFM)
- External HEPA filter, 99.97% (4000 CFM)

AD OPTION:

- (2) External adsorbers, 50 lbs., refillable, followed by a 2" poly afterfilter (2000 CFM)
- (2) External adsorbers, 50 lbs., refillable, followed by a 2" poly afterfilter (4000 CFM)

OTHER OPTIONS:

- 55 Gallon lid/hose
- Slide gate
- 50 Hz
- 575 Volt
- Single phase
- Raincap
- 5 Gal. container
- 20 Gal. container
- Silencer

* AFS FILTER EFFICIENCIES BASED ON ASHRAE 52-76 TEST METHOD

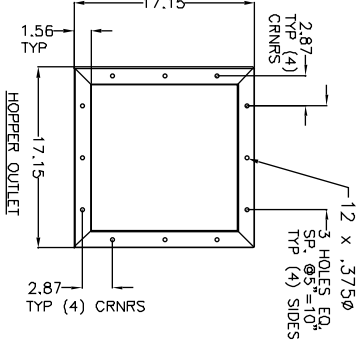
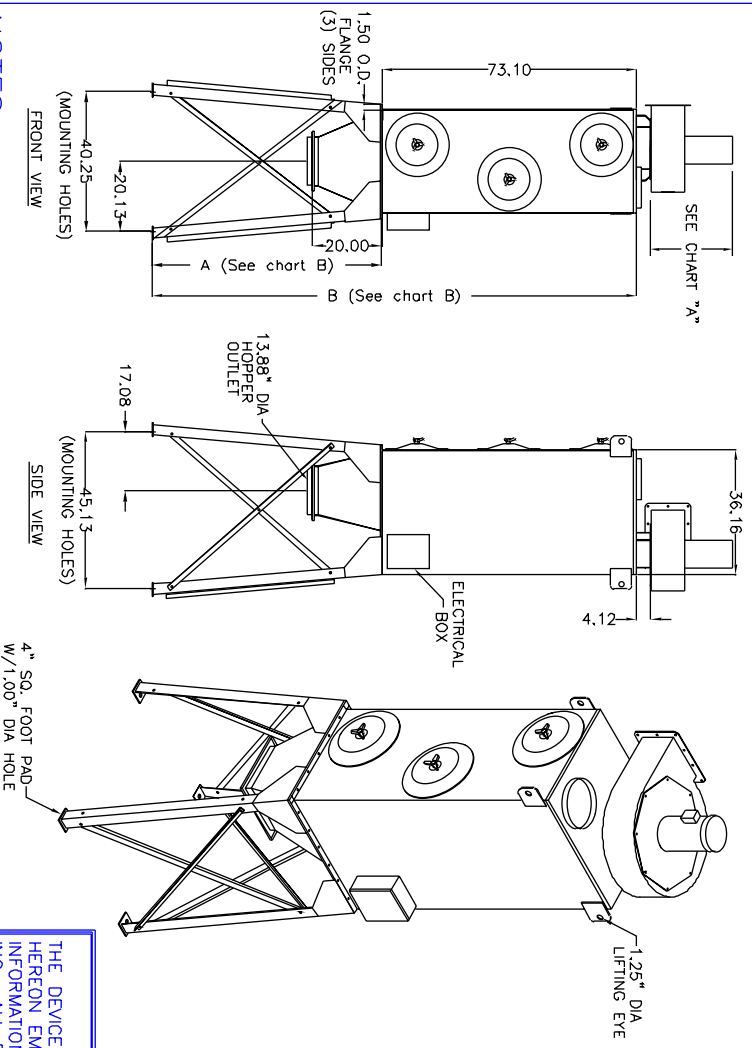


CHART A

MOTOR/BLOWER OPTIONS	MTR/BLWR HEIGHT	dBa	dBa WITH SILENCER
3 HP, RADIAL	15.00"	90	78
5 HP, RADIAL	19.50"	95	80
5 HP, BI	23.38"	84	75
7.5 HP, BI	26.25"	84	75

MOTOR/BLOWER OPTION	1	2	3	4	5	6	7	8	9
3 HP, RADIAL	1650	1600	1550	1450	1370	1180	910	605	—
5 HP, RADIAL	2000	1950	1875	1750	1600	1450	1300	1125	925
5 HP, BI	3450	3250	3000	2650	2250	1700	—	—	—
7.5 HP, BI	4300	4100	3950	3650	3300	2900	—	—	—

CUBIC FEET PER MINUTE (CFM)

NOTES:

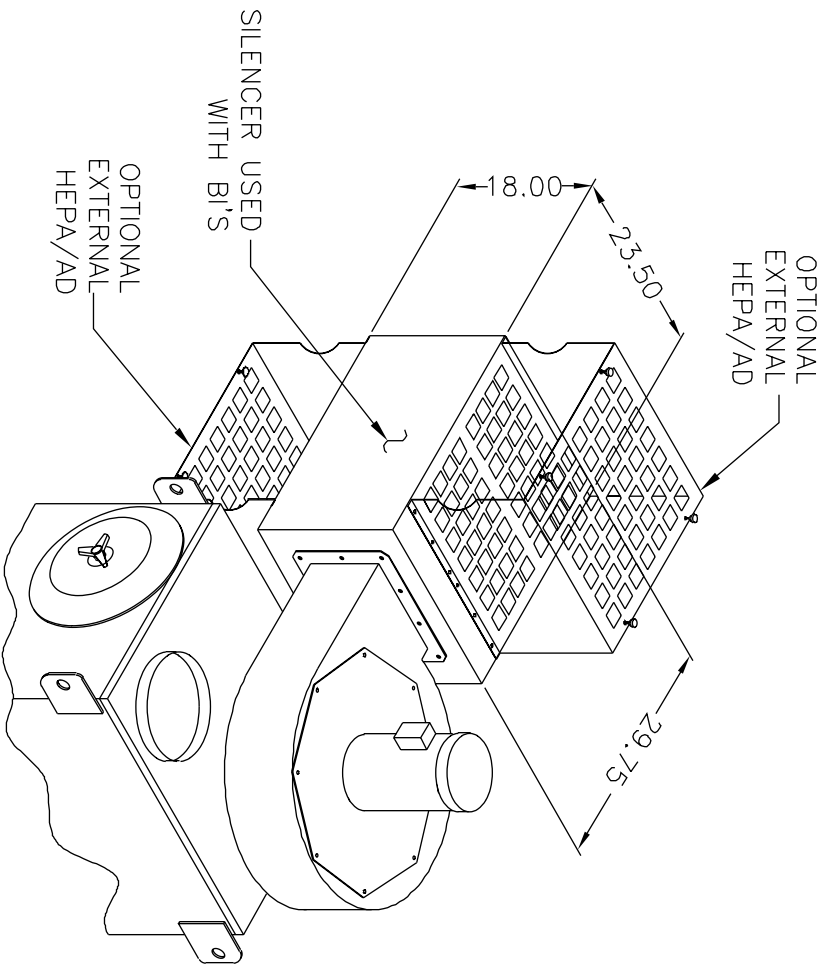
ITEMS DESIGNATED AS ARE INCLUDED IN THIS PROPOSAL

THE DEVICE DEPICTED AND DESCRIBED HEREON EXHIBITS PROPRIETARY INFORMATION OWNED BY AIRFLOW SYSTEMS, INC. ALL DESIGN, MANUFACTURING, REPRODUCTION, SALES, AND PATENT RIGHTS REGARDING THIS DEVICE OR DRAWING ARE RESERVED EXCEPT WHERE EXPLICIT RIGHT IS GRANTED IN WRITING.

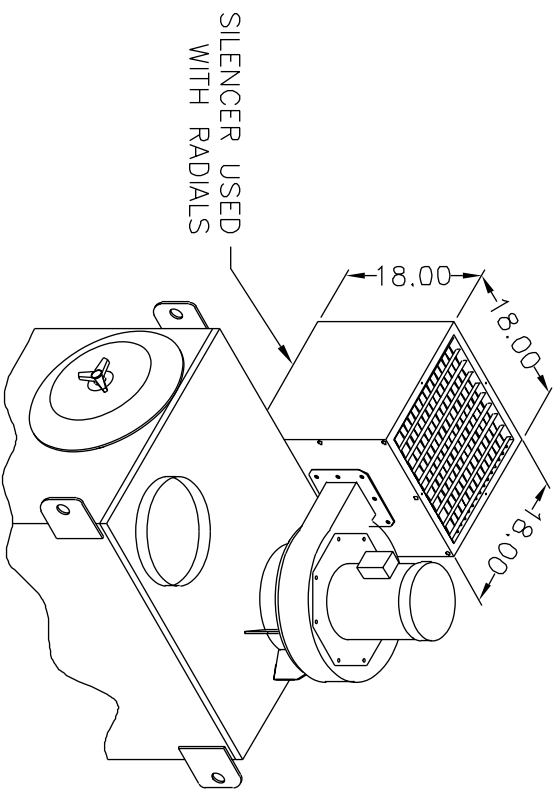
Diversified Air Systems, Inc.
Phone: 800-264-8958

DRAWN BY CB	TITLE DC-6 WITH HOPPER/STND
DATE 11-1-00	(PAGE 4 OF 5)
SCALE	DRAWING NO.: DC6SPEC (05-2915/E)

OPTIONAL SILENCERS



DC-6 WITH
BI BLOWER



DC-6 WITH
RADIAL BLOWER

NOTES:

THE DEVICE DEPICTED AND DESCRIBED
HEREON EMBODIES PROPRIETARY
INFORMATION OWNED BY AIRFLOW SYSTEMS,
INC. ALL DESIGN, MANUFACTURING,
REPRODUCTION, SALES, AND PATENT RIGHTS
REGARDING THIS DEVICE OR DRAWING ARE
RESERVED EXCEPT WHERE EXPLICIT RIGHT
IS GRANTED IN WRITING.

Diversified Air Systems, Inc.
Phone: 800-264-8958

DRAWN BY CB	TITLE DC-6 SILENCERS
DATE 11-1-00	(PAGE 5 OF 5)
SCALE	DRAWING NO.: DC6SPEC (05-2915/F)