

# DC-8 Dust Collector



## Features & Benefits

---

- **Complete, self-contained unit:**  
Economical; immediately functional.
- **Direct-Drive or FRP Blower:**  
Higher static pressure, longer filter life and greater reliability; non-sparking; no belts or pulleys to replace.
- **Non-electrostatic operation:**  
High reliability, low maintenance.
- **Ultra-Seal® filter mounting:**  
Eliminates contaminant bypass of filters.
- **Vibra-Pulse® Filter Cleaning System:**  
Cleans filters 75% more effectively than reverse pulse systems.
- **Regulator**

## Dimensions

---

Width:	52.00"
Height:	129.00"
Depth:	33.00"

## Options

---

- **Pressure Gauge Kit:**  
Indicates when filters require cleaning.
- **Block-off filter cleaning:**  
Vibra-Pulse® system cleans while unit is in operation.
- **HEPA High Efficiency After-Filter:**  
Provides 99.97% filtration efficiency.
- **Adsorption Module:**  
Charcoal after-filter removes gases and odors.
- **Hopper with Floor Stand:**  
For 5-gallon pail or 55-gallon drum.

## Specifications

---

**Construction:**

12 ga. steel cabinet, powder coated

**Blower Pkgs (HP):**

3.0, 5.0, 7.5, 10

**Noise Level (dBA):**

95/80 with silencer

**Electrical:**

3.0 HP - 115V/1/60; 208/230/460/575V/3/60, 8/4 amps., 190/380/3/50, 11.3/5.65

5.0 HP - 208/230/460/575/3/60, 12.6 amps., 190/380/3/50, 15.8/7.9

7.5 HP - 208/230/460/575/3/60, 17.2/8.6 amps., 190/380, 26/13 amps.

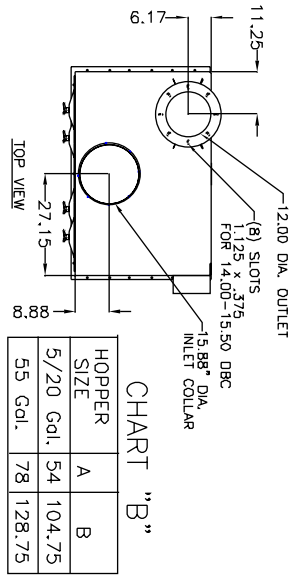
10 HP - 208/230/460/575/3/60, 24/12 amps., 190/380/3/50, 26/13 amps.

**Nominal CFM (in.):**

1075/4950

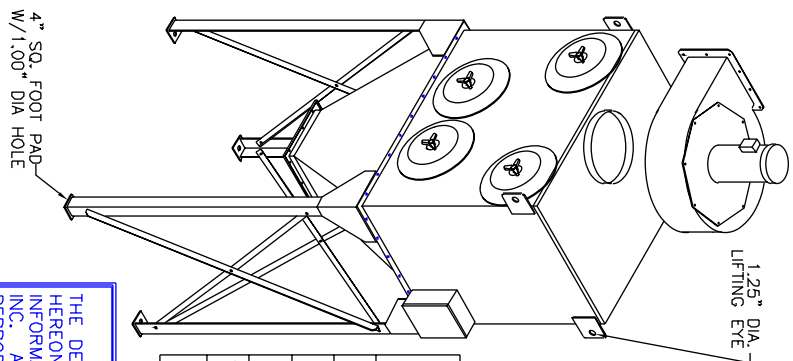
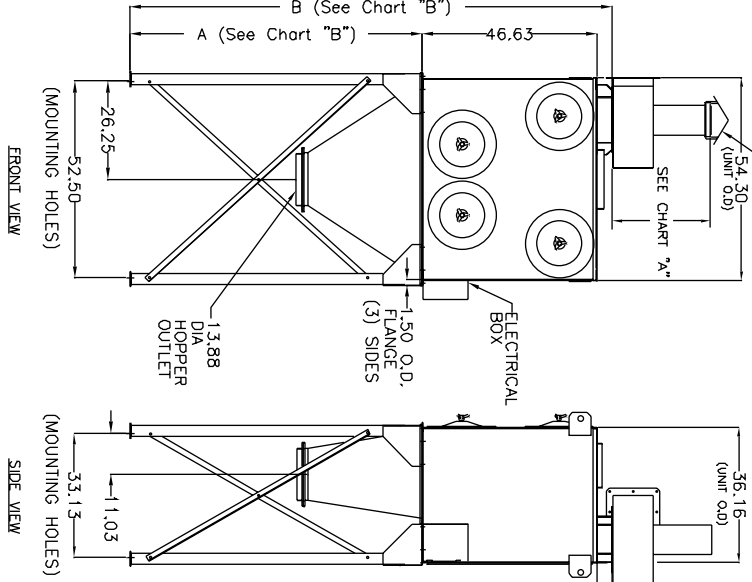
**Weight (lbs.):**

1480



**CHART "B"**

HOPPER SIZE	A	B
5/20 Gal.	54	104.75
55 Gal.	78	128.75



**CONSTRUCTION:**  
12 Gauge steel cabinet finished with a 2 part chemical and oil resistant paint. Includes hopper and stand, removable endcaps for easy access to filters, pressure gauge to indicate filter changes, and automatic cleaning. Also included is a direct drive radial motor/blower assembly. Motor starters/disconnects NOT INCLUDED. 1480 lbs.  
See chart below  
See chart "A"

**WEIGHT:**  
See chart below

**AIRFLOW/NOISE:**  
See chart "A"

**ELECTRICAL:**

- 5 HP 208/230/460/3/60, 12.0/6.0 amps, radial blower, std.
- 3 HP 208/230/460/3/60, 8.0/4.0 amps, radial blower, opt.
- 5 HP 208/230/460/3/60, 12.0/6.0 amps, BI blower, opt.
- 7.5 HP 208/230/460/3/60, 17.2/8.6 amps, BI blower, opt.
- 10 HP 208/230/460/3/60, 24/12amps, BI blower, opt.

**FIRE SUPPRESSION:**  
Equipment provided by others.

**SPECIAL NOTES:**  
Compressed air filter provided by others.

**SPECIFICATIONS:**

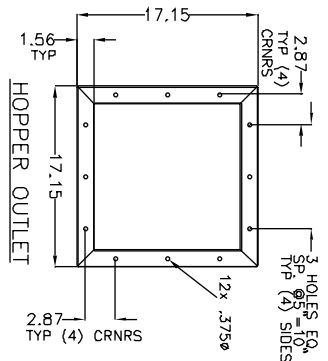
**MAIN FILTERS:**  (8)16" Diameter cartridges, CLEAN 2 @ std.  
 (8)16" Diameter cartridges, FiberDust, @ opt.

**HEPA OPTION:**  External HEPA filter, 99.97% (2000 CFM)  
 External HEPA filter, 99.97% (4000 CFM)

**AD OPTION:**  (2) External adsorbers, 50 lbs., refillable, followed by a 2 poly afterfilter (2000 CFM)  
 (2) External adsorbers, 50 lbs., refillable, followed by a 2" poly afterfilter (4000 CFM)

**OTHER OPTIONS:**  55 Gallon lid/hose  55 Gallon hopper  
 Slide gate  20 Gallon hopper  
 50 Hz  
 575 Volt  
 Single phase  
 Silencer  
 Raincap

\* .45% FILTER EFFICIENCIES BASED ON ASHRAE 52-76 TEST METHOD



**CHART "A"**

MOTOR/BLOWER OPTION	MTR/BLWR HEIGHT	DBA WITH SILENCER
3 HP, RADIAL	15.00"	78
5 HP, RADIAL	19.50"	80
5 HP, BI	23.38"	75
7.5 HP, BI	26.25"	84
10 HP, BI	26.00"	80

**"wg" EXTERNAL ADDED STATIC**

MOTOR/BLOWER OPTION	1	2	3	4	5	6	7	8	9	10
3 HP, RAD.	1650	1600	1550	1450	1370	1180	910	605	—	—
5 HP, RAD.	2025	1970	1890	1760	1600	1450	1300	1125	925	—
5 HP, BI	3550	3350	3075	2700	2275	1700	—	—	—	—
7.5 HP, BI	4950	4800	4550	4250	3875	3300	2500	—	—	—
10 HP, BI	5500	5375	5250	5100	4950	4750	4550	4350	4100	3850

CUBIC FEET PER MINUTE (CFM)

THE DEVICE DEPICTED AND DESCRIBED HEREON EMBODIES PROPRIETARY INFORMATION OWNED BY AIRFLOW SYSTEMS, INC. ALL DESIGN, MANUFACTURING, REPRODUCTION, SALES, AND PATENT RIGHTS REGARDING THIS DEVICE OR DRAWING ARE RESERVED EXCEPT WHERE EXPLICIT RIGHT IS GRANTED IN WRITING.

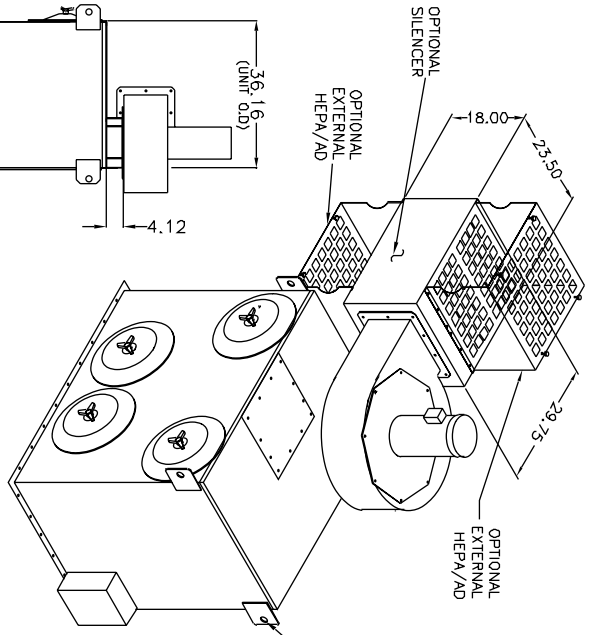
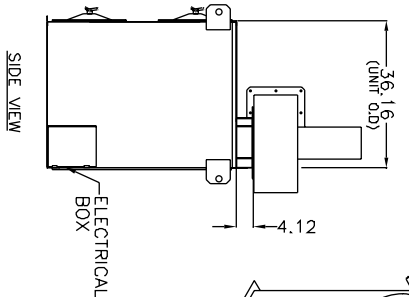
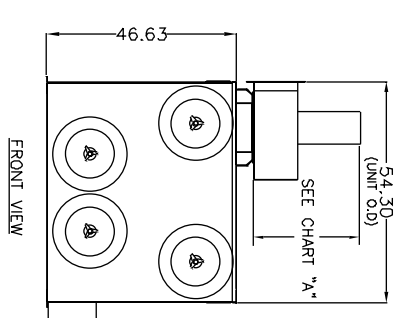
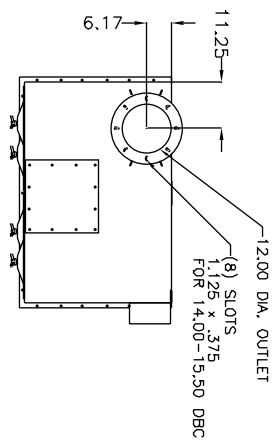
**Diversified Air Systems, Inc.**  
Phone: 800-264-8958

Drawn By: JRS  
Date: 9-15-99  
Scale: NTS

Title: DC-8 WITH HOPPER/STND  
(PAGE 1 OF 3)

Drawing No.: DC-8SPEC (18-2322/H)

**NOTES:**  
ITEMS DESIGNATED AS  ARE INCLUDED IN THIS PROPOSAL



**CONSTRUCTION:**

12 Gauge steel cabinet finished with a 2 part chemical and oil resistant paint. Includes removable endcops for easy access to filters, pressure gauge to indicate filter changes, and automatic cleaning. Also included is a direct drive motor/blower assembly. Motor starters/disconnects NOT INCLUDED.

**WEIGHT:**  
**AIRFLOW:**  
**NOISE:**  
**ELECTRICAL:**

1224 lbs.  
See chart below  
See chart "A"  
 5 HP 208/230/460/3/60, 12.0/6.0 amps, radial blower, std.  
 3 HP 208/230/460/3/60, 8.0/4.0 amps, radial blower, opt.  
 5 HP 208/230/460/3/60, 12.0/6.0 amps, BI blower, opt.  
 7.5 HP 208/230/460/3/60, 17.2/8.6 amps, BI blower, opt.  
 10 HP 208/230/460/3/60, 24/12 amps, BI blower, opt.

**FIRE SUPPRESSION:**

Equipment provided by others.  
Compressed air filter provided by others.

**SPECIFICATIONS:**

**MAIN FILTERS:**  (8) 16" Diameter cartridges, CLEAN 2, <sup>®</sup> std. <sub>®</sub> opt.  
 (8) 16" Diameter cartridges, FiberDust, <sup>®</sup> opt.

**HEPA OPTION:**  External HEPA filter, 99.97% (2000 CFM)  
 External HEPA filter, 99.97% (4000 CFM)

**AD OPTION:**  (2) External adsorbers, 50 lbs., refillable, followed by a 2" poly afterfilter (2000 CFM)  
 (2) External adsorbers, 50 lbs., refillable, followed by a 2" poly afterfilter (4000 CFM)

**OTHER OPTIONS:**  50 Hz  
 575 Volt  
 Single phase  
 Silencer  
 Rollcapp

\* AFS FILTER EFFICIENCIES BASED ON ASHRAE 52-76 TEST METHOD

**CHART "A"**

MOTOR/BLOWER OPTION	MTR/BLWR HEIGHT	DBA WITH SILENCER
3 HP, RADIAL	15.00"	90
5 HP, RADIAL	19.50"	95
5 HP, BI	23.38"	84
7.5 HP, BI	26.25"	84
10 HP, BI	26.00"	95
		80

MOTOR/BLOWER OPTION	1	2	3	4	5	6	7	8	9	10
3 HP, RADIAL	1650	1600	1550	1450	1370	1180	910	605		
5 HP, RADIAL	2025	1970	1890	1760	1600	1450	1300	1125	925	
5 HP, BI	3550	3350	3075	2700	2275	1700				
7.5 HP, BI	4950	4800	4550	4250	3875	3300	2500			
10 HP, BI	5500	5375	5250	5100	4950	4750	4550	4350	4100	3850

\*w/g EXTERNAL ADDED STATIC  
CUBIC FEET PER MINUTE (CFM)

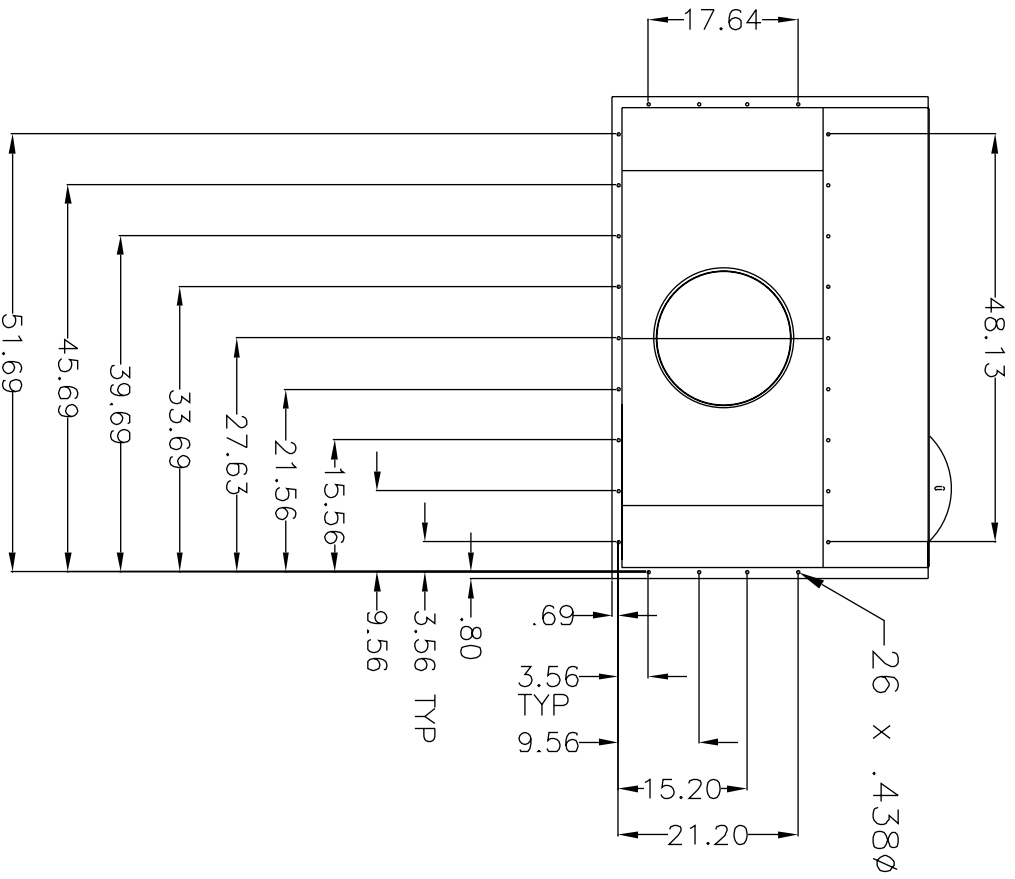
**NOTES:**  
ITEMS DESIGNATED AS  ARE INCLUDED IN THIS PROPOSAL  
SEE PAGE 3 FOR BIN MOUNTING HOLE PATTERN

THE DEVICE DEPICTED AND DESCRIBED HEREON EMBODIES PROPRIETARY INFORMATION OWNED BY AIRFLOW SYSTEMS, INC. ALL DESIGN, MANUFACTURING, REPRODUCTION, SALES, AND PATENT RIGHTS REGARDING THIS DEVICE OR DRAWING ARE RESERVED EXCEPT WHERE EXPLICIT RIGHT IS GRANTED IN WRITING.

**Diversified Air Systems, Inc.**  
**Phone: 800-264-8958**

DRAWN BY JKS	TITLE DC-8 BIN VENT
DATE 9-15-99	(PAGE 2 OF 3)
SCALE N.T.S.	DRAWING NO.: DC-8SPEC (18-2322/H)

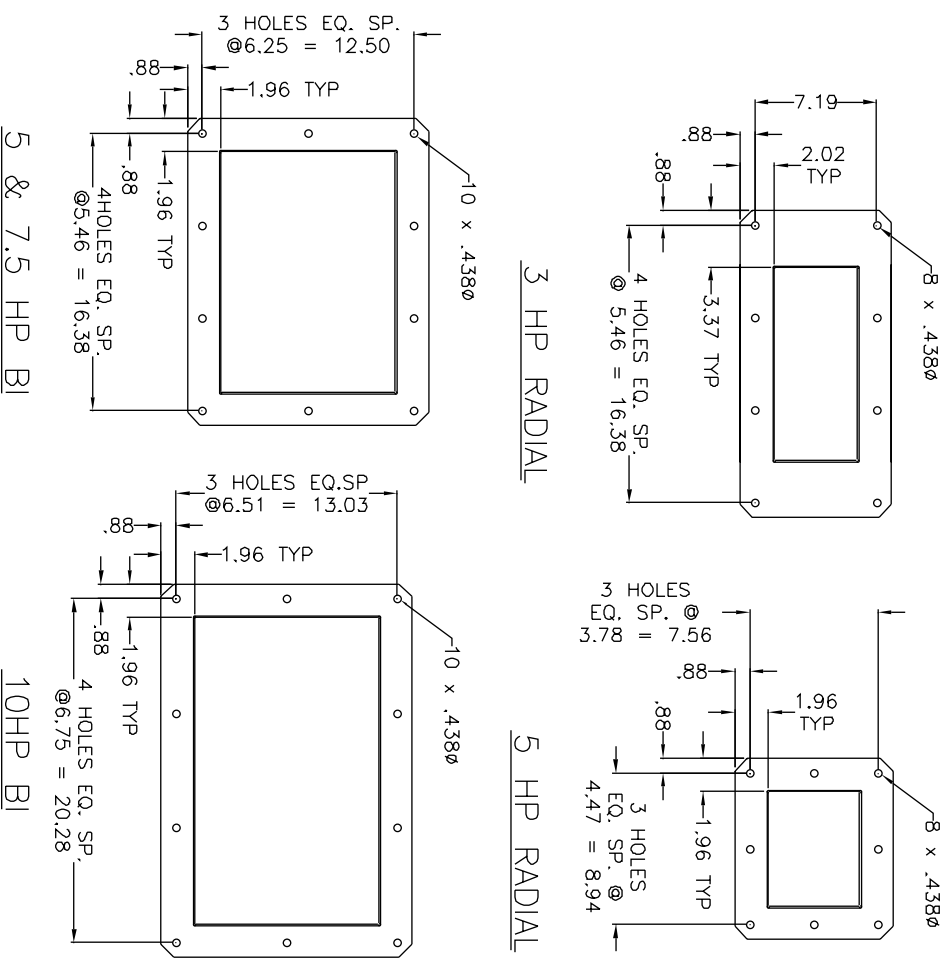
# BIN MOUNTING HOLE PATTERN



NOTES:

BOTTOM VIEW

# BLOWER MOUNTING HOLE PATTERN



THE DEVICE DEPICTED AND DESCRIBED HEREON EMBODIES PROPRIETARY INFORMATION OWNED BY AIRFLOW SYSTEMS, INC. ALL DESIGN, MANUFACTURING, REPRODUCTION, SALES, AND PATENT RIGHTS REGARDING THIS DEVICE OR DRAWING ARE RESERVED EXCEPT WHERE EXPLICIT RIGHT IS GRANTED IN WRITING.

Diversified Air Systems, Inc.  
Phone: 800-264-8958

DRAWN BY: JRS  
DATE: 9-15-99  
SCALE: NTS

TITLE: DC8 BIN & BLWR MNTING PTRN (PAGE 3 OF 3)  
DRAWING NO.: DC-8SPEC (18-2322/H)