



E-Z Arm® Extractor Arm

Features & Benefits

- **Friction release pawl-and-sprocket design:**
Engages positively when positioned, yet offers no resistance when removed.
- **7-, 10-, or 14-foot lengths:**
Provides for high-volume collection with maximum reach.
- **Strong HDPE flat base joint:**
Easy to install; HDPE bearing material works to seal base without collars or fittings.
- **Large 13-in. dia. inlet hood with 360° flange handle:**
Permits 160° of movement and easier hood positioning than single-handle designs.
- **Durable rounded duct constructed of 21-ga. aluminum:**
Withstands industrial use, yet lightweight for easy operation. Powder coated inside and outside.
- **Hi-Flow spiral wire-reinforced hose.**
Provides superior strength and resistance to sparks and embers.

Options

- **65 Watt Halogen Light Kit:**
Improves worker visibility and productivity.
- **Damper:**
Shut off air flow when not in use.
- **Silencer:**
Reduces air flow noise for quieter operation.
- **Wall Brackets:**
Maximizes installation versatility.
- **Adjustable Height Floor Stand:**
Maximum height of 120 in. adds installation versatility.
- **Filtration Units:**
HEPA, cartridge, and odor-control filter systems available based on application.
- **Boom Extensions:**
System includes steel boom arm, boom arm wall bracket, tube kit, flex hose, and one transition to 8-in. dia.

Specifications

Construction:

21 ga. aluminum tube with spiral wire-reinforced Hi-Flow hose

Arm Lengths:

7 ft. (E-Z Arm® 7A07) , 10 ft. (E-Z Arm® 7A10), 14 ft. (E-Z Arm® 7A14)

Blower Pkgs (HP):

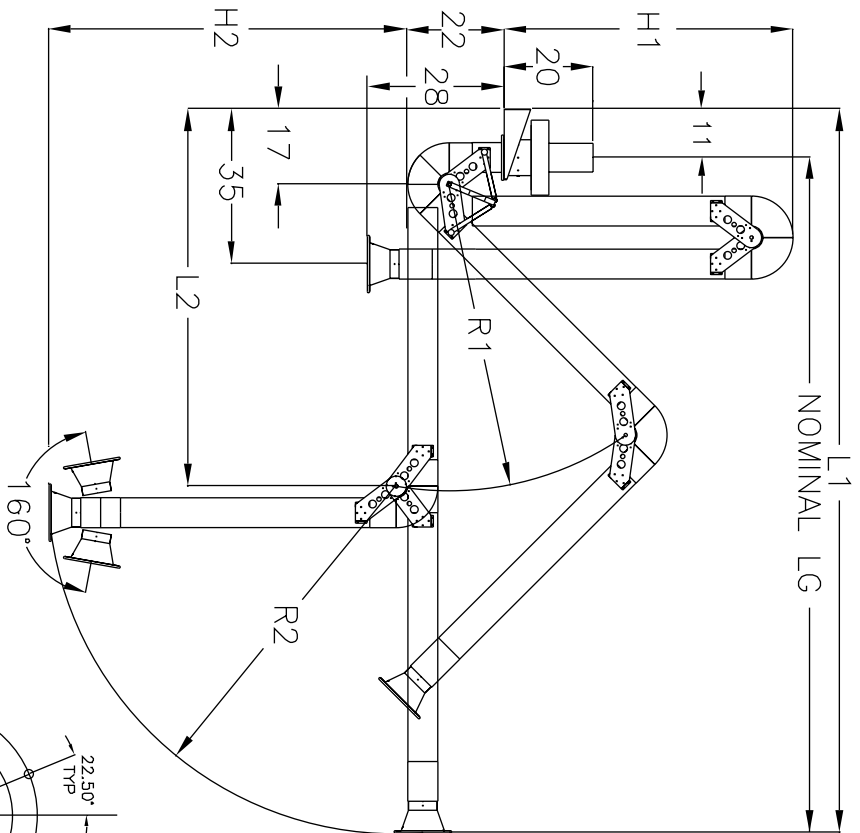
.75, 1.5, 3.0, 5.0, 7.5

Nominal CFM (in.):

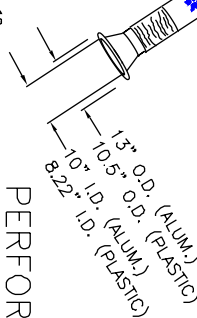
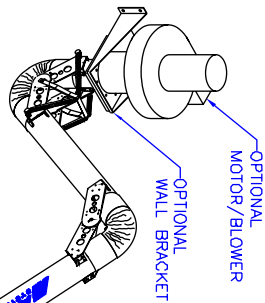
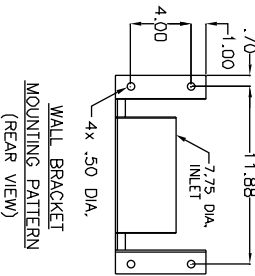
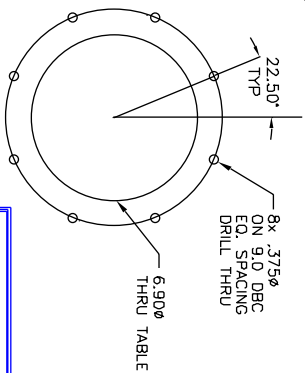
600 to 1500

Weight (lbs.):

E-Z Arm® 7A07 - 36 lbs., E-Z Arm® 7A10 - 40 lbs.,
E-Z Arm® 7A14 - 45 lbs.



	7 FT (7A07)	10 FT (7A10)	14 FT (7A14)
L1	95	129.50	169.75
L2	49.50	66.75	86.25
H1	23	41	61
H2	49.25	67	86.75
R1	32.50	49.75	69.25
R2	46.25	64	83.75



SPECIFICATIONS:

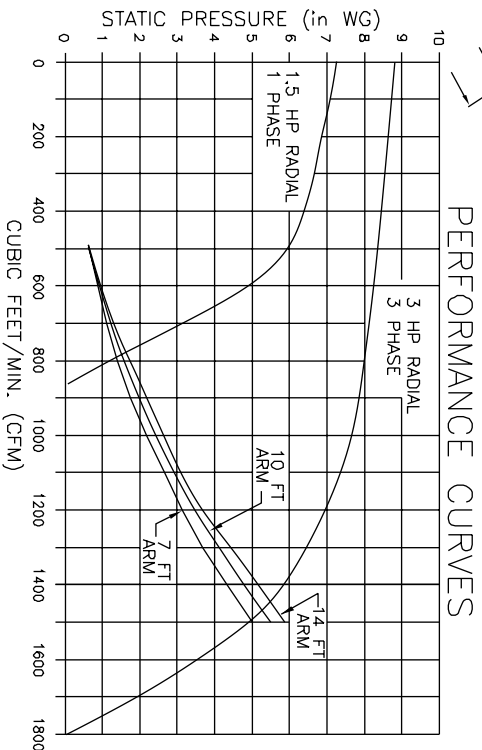
CONSTRUCTION: Aluminum tubes connected with a spiral flex duct (UL Rated). Heavy duty aluminum joints with patented friction release system at middle joint, spring balanced ring base joint and universal joint at flanged inlet hood.

LENGTH-WEIGHT:

- 7 ft. - 36 lbs.
- 10 ft. - 40 lbs.
- 14 ft. - 45 lbs.

OPTIONS:

- Light Kit
- Damper
- Motor/Blower
- Wall Bracket
- Silencer
- Boom Arms: 5 ft., 10 ft., 16 ft.



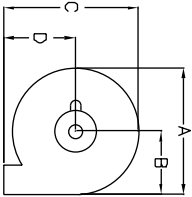
Items designated as are included in this proposal

THE DEVICE DEPICTED AND DESCRIBED HEREON EMBODIES PROPRIETARY INFORMATION OWNED BY AIRFLOW SYSTEMS, INC. ALL DESIGN, MANUFACTURING, REPRODUCTION, SALES, AND PATENT RIGHTS REGARDING THIS DEVICE OR DRAWING ARE RESERVED EXCEPT WHERE EXPLICIT RIGHT IS GRANTED IN WRITING.

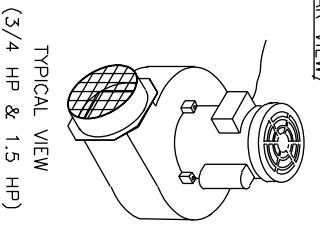
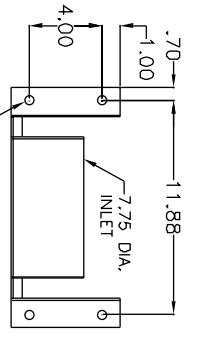
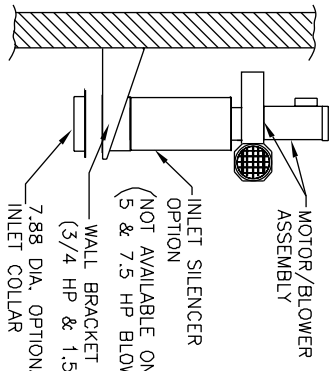
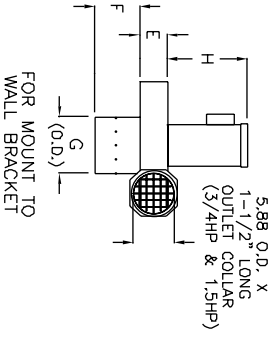
Diversified Air Systems, Inc.
Phone: 800-264-8958

DRAWN BY: JRS
 DATE: 8-14-00
 TITLE: E-Z ARM High Flow Extractor
 EZARMSPC (87-2791/J)

BLOWERS	A	B	C	D	E	F	G
BM08	13.48	7.60	12.17	5.45	4.50	4.50	6.00
BM09	18.06	9.72	18.63	9.63	4.00	3.00	6.13
BM10	18.06	9.72	18.63	9.63	4.00	3.00	6.13

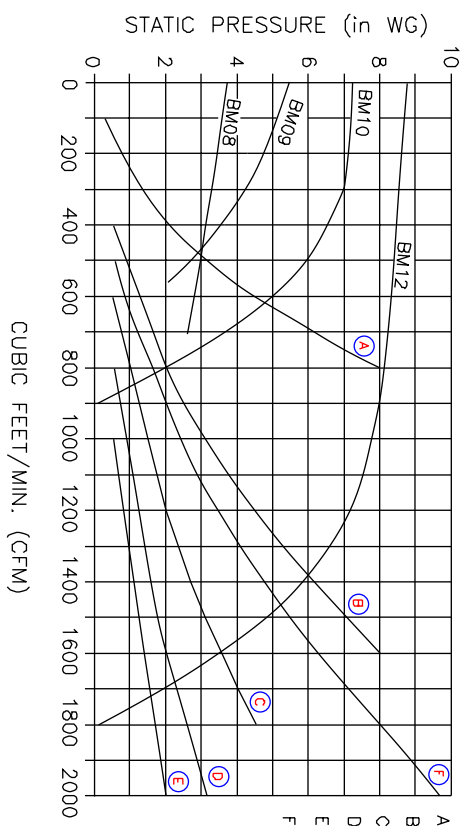


MOTORS	H
3/4 HP	10.00
1.5 HP	11.50



- SPECIFICATIONS:**
- BM08:** 3/4 HP C-flange ball bearing motor with steel wheel and a 1.25 safety factor. * FOR 4" ARM 110/220/1/60, 9.8/4.9 amps
Outlet dBA: 80 dBA
 - BM09:** 3/4 HP C-flange ball bearing motor, 1.25 safety factor. Cast aluminum wheel, self-cleaning radial blade, AMCA type B spark resistant construction. 115/230/1/60, 9.8/4.9 amps
208-230/460/3/60, 2.7-2.6/1.3 amps
Outlet dBA: 88 dBA
 - BM10:** 1.5 HP C-flange ball bearing motor, 1.25 safety factor. Cast aluminum wheel, self-cleaning radial blade, AMCA type B spark resistant construction. 115/208-230/1/60, 15.0/7.9-7.5 amps
208-230/460/3/60, 4.8-4.2/2.1 amps
(50 HZ available)
Outlet dBA: 88 dBA

- BM12:** 3 HP C-flange ball bearing motor, 1.25 safety factor. Cast aluminum wheel, self-cleaning radial blade, AMCA type B spark resistant construction. 208-230/460/3/60, 8.0/4.0 amps (50 HZ available)
Outlet dBA: 92 dBA
- FIRE SUPPRESSION:** Equipment provided by others.
- OPTIONS:**
- Silencer mounted on outlet (reduces noise from motor/blower: 10 dBA average Reduction)
 - Silencer mounted on inlet (reduces noise at hood) Average 3 dBA Reduction
 - Wall bracket



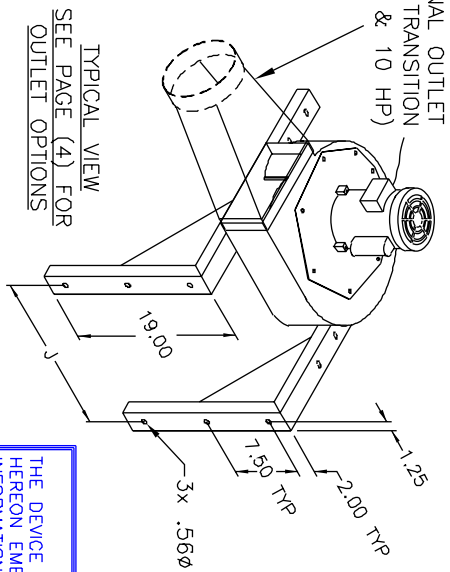
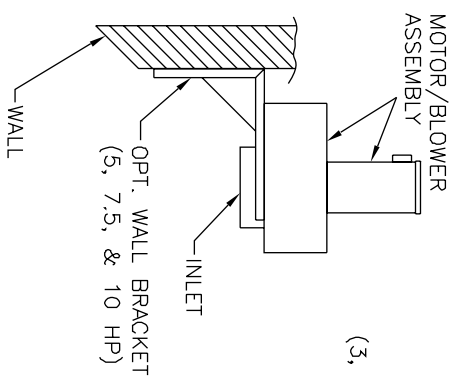
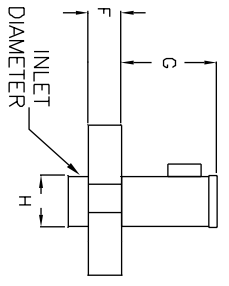
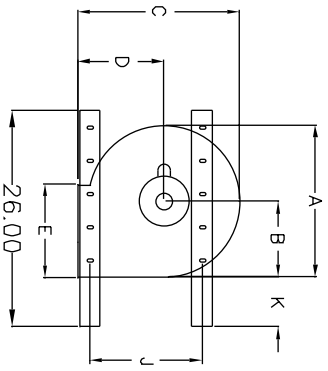
- A = (1)8' 4" E-Z ARM (R) II
- B = (2)8' 4" E-Z ARM (R) II
- C = (3)8' 4" E-Z ARM (R) II
- D = (4)8' 4" E-Z ARM (R) II
- E = (5)8' 4" E-Z ARM (R) II
- F = (1) 10' E-Z ARM (R) II

THE DEVICE DEPICTED AND DESCRIBED HEREON EMBODIES PROPRIETARY INFORMATION OWNED BY AIRFLOW SYSTEMS, INC. ALL DESIGN, MANUFACTURING, REPRODUCTION, SALES, AND PATENT RIGHTS REGARDING THIS DEVICE OR DRAWING ARE RESERVED EXCEPT WHERE EXPLICIT RIGHT IS GRANTED IN WRITING.

Diversified Air Systems, Inc.
Phone: 800-264-8958

DRAWN BY: CB	TITLE: MOTOR/BLOWER ASSEMBLIES PG 1 OF 4
DATE: 3-8-01	DRAWING NO.: BLWRSPEC (08-3086/N)
SCALE: NTS	

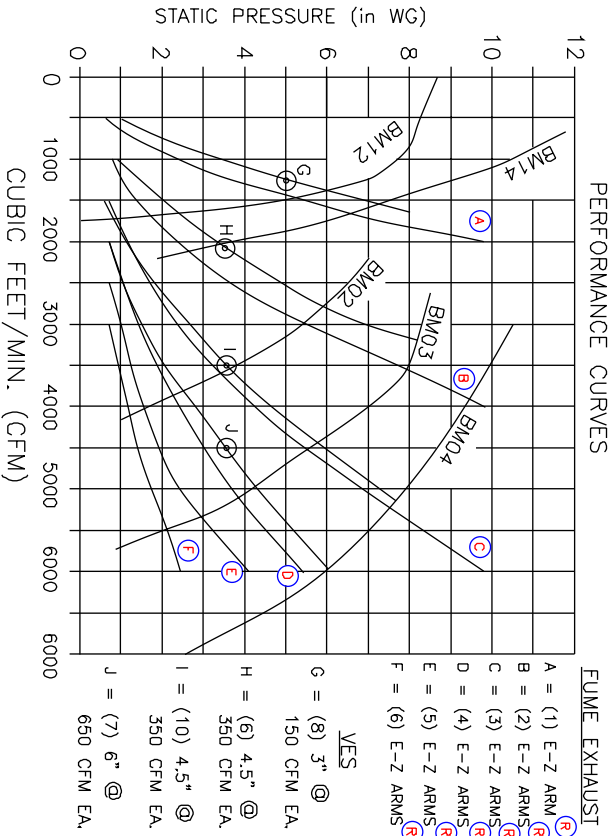
NOTES:
 ITEMS DESIGNATED AS ARE INCLUDED IN THIS PROPOSAL.



- SPECIFICATIONS:**
- BM12:** 3 HP C-flange ball bearing motor, 1.25 safety factor, Cast aluminum wheel, self-cleaning radial blade, AMCA Type B spark resistant construction, 208-230/460/3/60, 8.0/4.0 amps
 - BM14:** 5 HP C-flange ball bearing motor, 1.25 safety factor, Cast aluminum wheel, self-cleaning radial blade, AMCA Type B spark resistant construction, 208-230/460/3/60, 12.0/6.0 amps
 - BM02:** 5 HP C-flange ball bearing motor, 1.25 safety factor, Steel backward-incline wheel, 208-230/460/3/60, 12.0/6.0 amps
 - BM03:** 7.5 HP C-flange ball bearing motor, 1.25 safety factor, Steel backward-incline wheel, 208-230/460/3/60, 17.2/8.6 amps

- BM04:** 10 HP C-flange ball bearing motor, 1.25 safety factor, Steel backward-incline wheel, high flow, 208-230/460/3/60, 24.0/12.0/9.6 amps
- NOISE:**
- 3 HP, Radial - 90 dBA / 78 dBA with silencer or duct
 - 5 HP, Radial - 95 dBA / 80 dBA with silencer or duct
 - 5 HP, B.I. - 84 dBA / 75 dBA with silencer or duct
 - 7.5 HP, B.I. - 84 dBA / 75 dBA with silencer or duct
 - 10 HP, B.I. - 89 dBA / 78 dBA with silencer or duct
- FIRE SUPPRESSION:** Equipment provided by others.
- OPTIONS:**
- Wall bracket
 - Silencer mounted on outlet, (reduces noise from motor/blower)
 - 50 Hz motor

	A	B	C	D	E	F	G	H	J	K	Hard- Wires
BM12	18.00	10.50	17.00	9.00	11.50	5.06	11.25	8.13	N/A	N/A	N/A
BM14	22.25	11.50	22.75	11.00	7.31	5.75	13.75	8.00	19.00	6.00	7
BM02	23.25	13.25	22.00	10.50	3.38	9.75	13.75	12.00	19.00	6.00	7
BM03	25.50	14.50	24.00	11.38	14.63	10.75	15.50	14.00	20.00	6.00	8
BM04	28.50	15.81	27.88	12.00	16.75	11.38	14.50	16.00	22.50	6.00	8



NOTES:

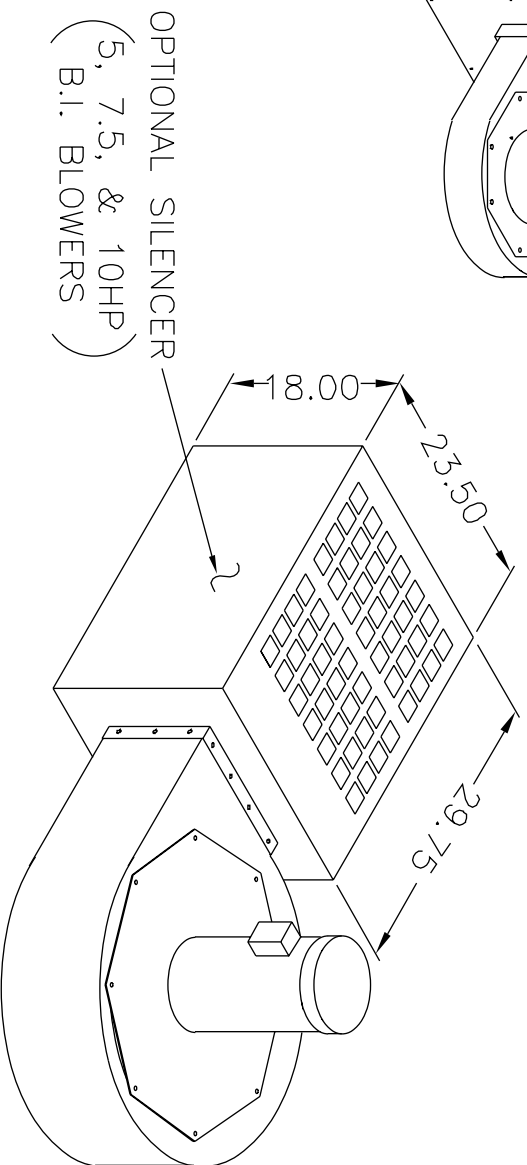
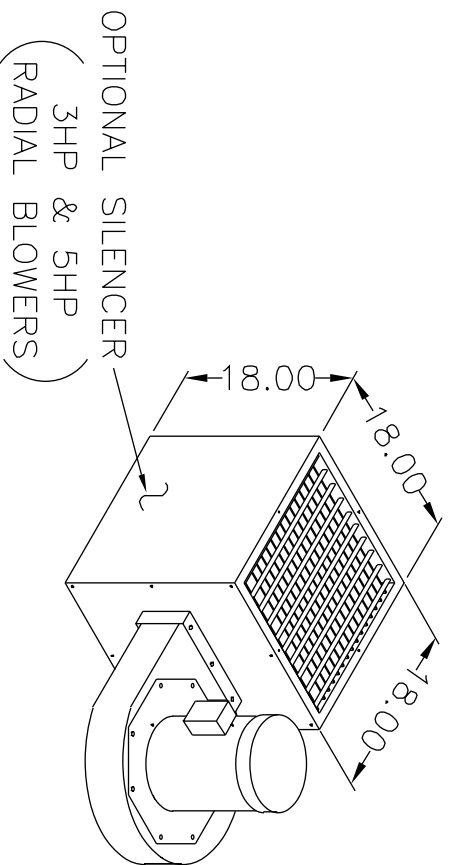
ITEMS DESIGNATED AS ARE INCLUDED IN THIS PROPOSAL.

THE DEVICE DEPICTED AND DESCRIBED HEREON EMBODIES PROPRIETARY INFORMATION OWNED BY AIRFLOW SYSTEMS, INC. ALL DESIGN, MANUFACTURING, REPRODUCTION, SALES, AND PATENT RIGHTS REGARDING THIS DEVICE OR DRAWING ARE RESERVED EXCEPT WHERE EXPLICIT RIGHT IS GRANTED IN WRITING.

Diversified Air Systems, Inc.
 Phone: 800-264-8958

DRAWN BY: JRS
 DATE: 3-8-01
 SCALE: NTS

TITLE: MOTOR/BLOWER ASSEMBLIES PG 2 OF 4
 DRAWING NO.: BLWRSPEC (08-3086/N)



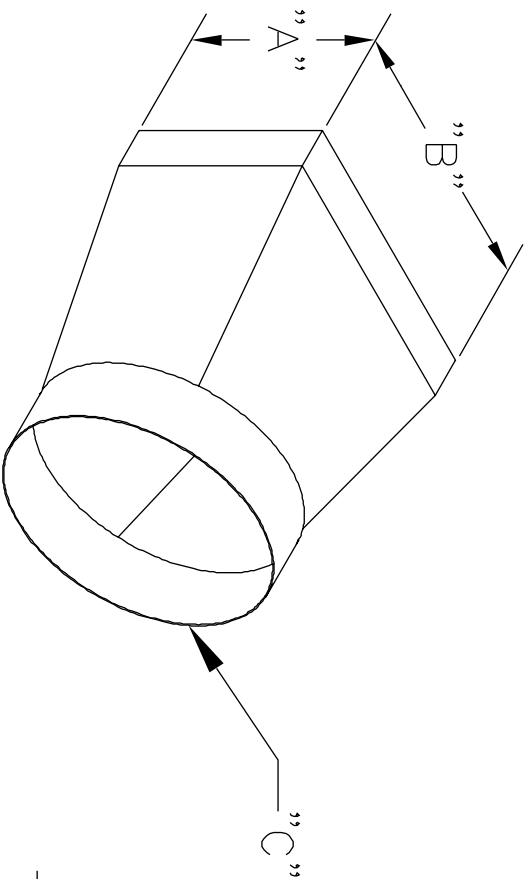
NOTES:
ITEMS DESIGNATED AS ARE INCLUDED IN THIS PROPOSAL.

THE DEVICE DEPICTED AND DESCRIBED
HEREON EMBODIES PROPRIETARY
INFORMATION OWNED BY AIRFLOW SYSTEMS,
INC. ALL DESIGN, MANUFACTURING,
REPRODUCTION, SALES, AND PATENT RIGHTS
REGARDING THIS DEVICE OR DRAWING ARE
RESERVED EXCEPT WHERE EXPLICIT RIGHT
IS GRANTED IN WRITING.

Diversified Air Systems, Inc.
Phone: 800-264-8958

DRAWN BY: JRS
DATE: 3-8-01
SCALE: NTS

TITLE: MOTOR/BLOWER
ASSEMBLIES PG. 3 OF 4
DRAWING No.: BLWRSPEC (08-3086/N)



TRANSITION SIZE CHART

MOTOR / BLOWER	PART NUMBER	"A" (I.D)	"B" (I.D)	"C" (DIAMETER)
3HP RADIAL	2HDD-8701	5.12"	11.69"	7.88" DIA.(O.D)
5HP RADIAL	2HDD-8702	5.88"	7.50"	9.88" DIA.(O.D)
5HP B.I.	2HDD-8703	9.88"	13.63"	11.88" DIA.(O.D)
7.5HP B.I.	2HDD-8704	11.00"	14.75"	13.88" DIA.(O.D)
10HP B.I.	2HDD-8705	11.50"	16.88"	13.88" DIA.(O.D)

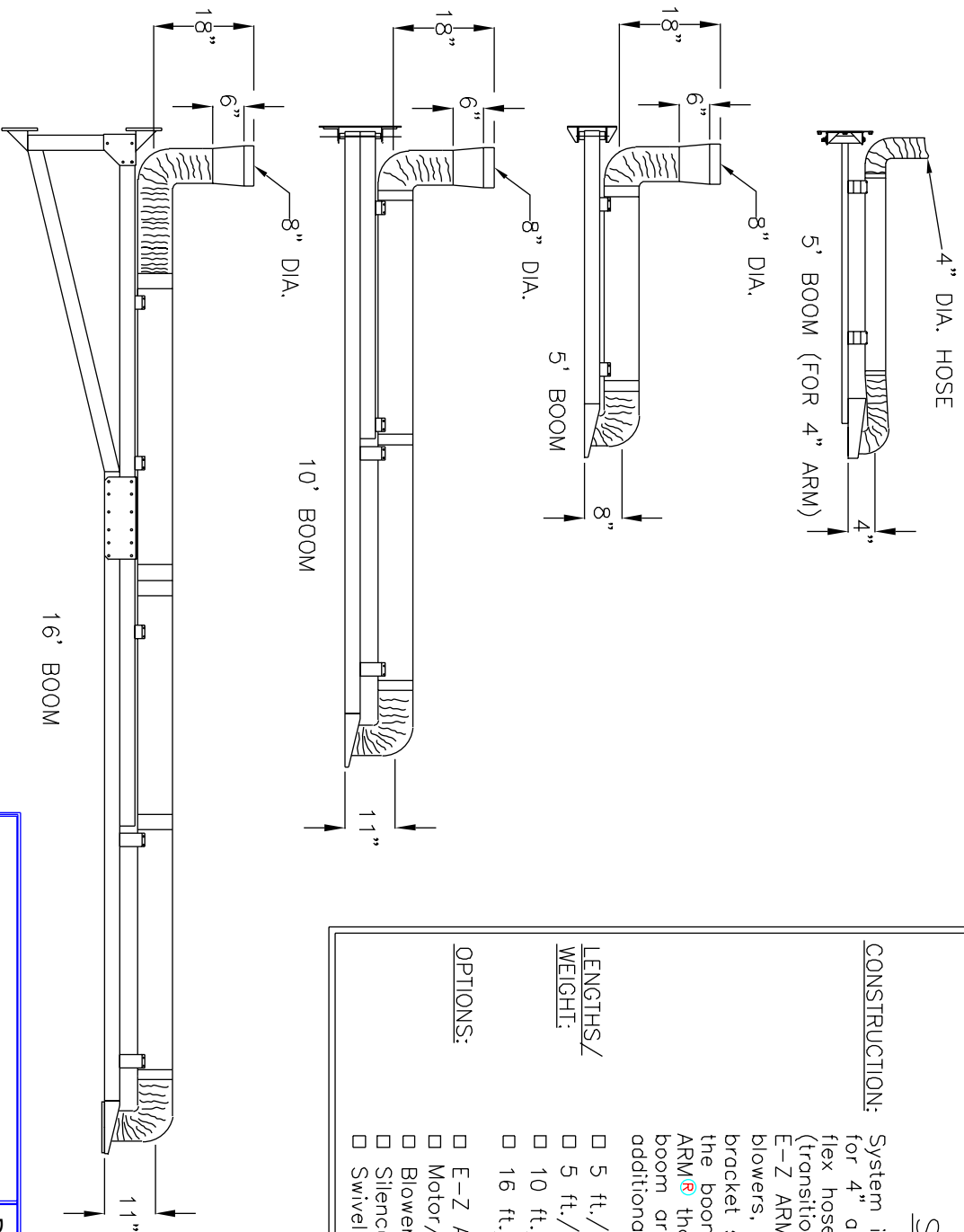
THE DEVICE DEPICTED AND DESCRIBED
 HEREON EMBODIES PROPRIETARY
 INFORMATION OWNED BY AIRFLOW SYSTEMS,
 INC. ALL DESIGN, MANUFACTURING,
 REPRODUCTION, SALES, AND PATENT RIGHTS
 REGARDING THIS DEVICE OR DRAWING ARE
 RESERVED EXCEPT WHERE EXPLICIT RIGHT
 IS GRANTED IN WRITING.

Diversified Air Systems, Inc.
Phone: 800-264-8958

DRAWN BY: JRS
 DATE: 3-8-01
 SCALE: NTS

TITLE: MOTOR/BLOWER ASSEMBLIES PG 4 OF 4
 DRAWING NO.: BLWRSPEC (08-3086/N)

NOTES:
 ITEMS DESIGNATED AS ARE INCLUDED IN THIS PROPOSAL.



NOTES:
 ITEMS DESIGNATED AS ARE INCLUDED IN THIS PROPOSAL.
 SEE PAGE 3 FOR WALL BRACKET MOUNTING PATTERN

SPECIFICATIONS:

CONSTRUCTION: System includes a steel boom arm (aluminum for 4" arm), boom arm wall bracket, tube kit, flex hose, and one transition to 8" diameter (transition not included with the 4" boom arm). E-Z ARM® High Flow Extractor arms, motor/blowers, silencers, and blower mounting wall bracket sold separately. The maximum load on the booms is the weight of the largest E-Z ARM® that can be mounted to both types of boom arm. The booms are not designed for additional added loads.

**LENGTHS/
WEIGHT:**

- 5 ft./20 lbs. (For E-Z ARM® 4")
- 5 ft./37 lbs. (For E-Z ARM®)
- 10 ft./96 lbs. (For E-Z ARM®)
- 16 ft./169 lbs. (For E-Z ARM®)

OPTIONS:

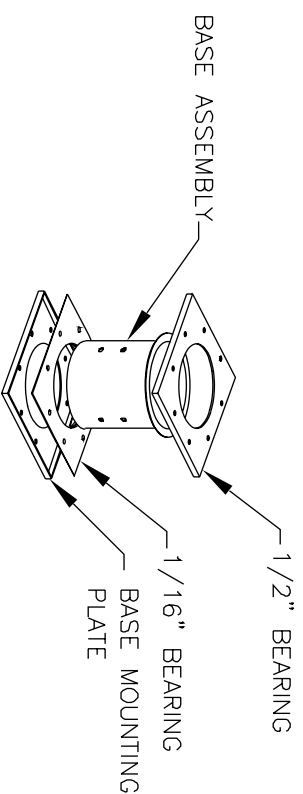
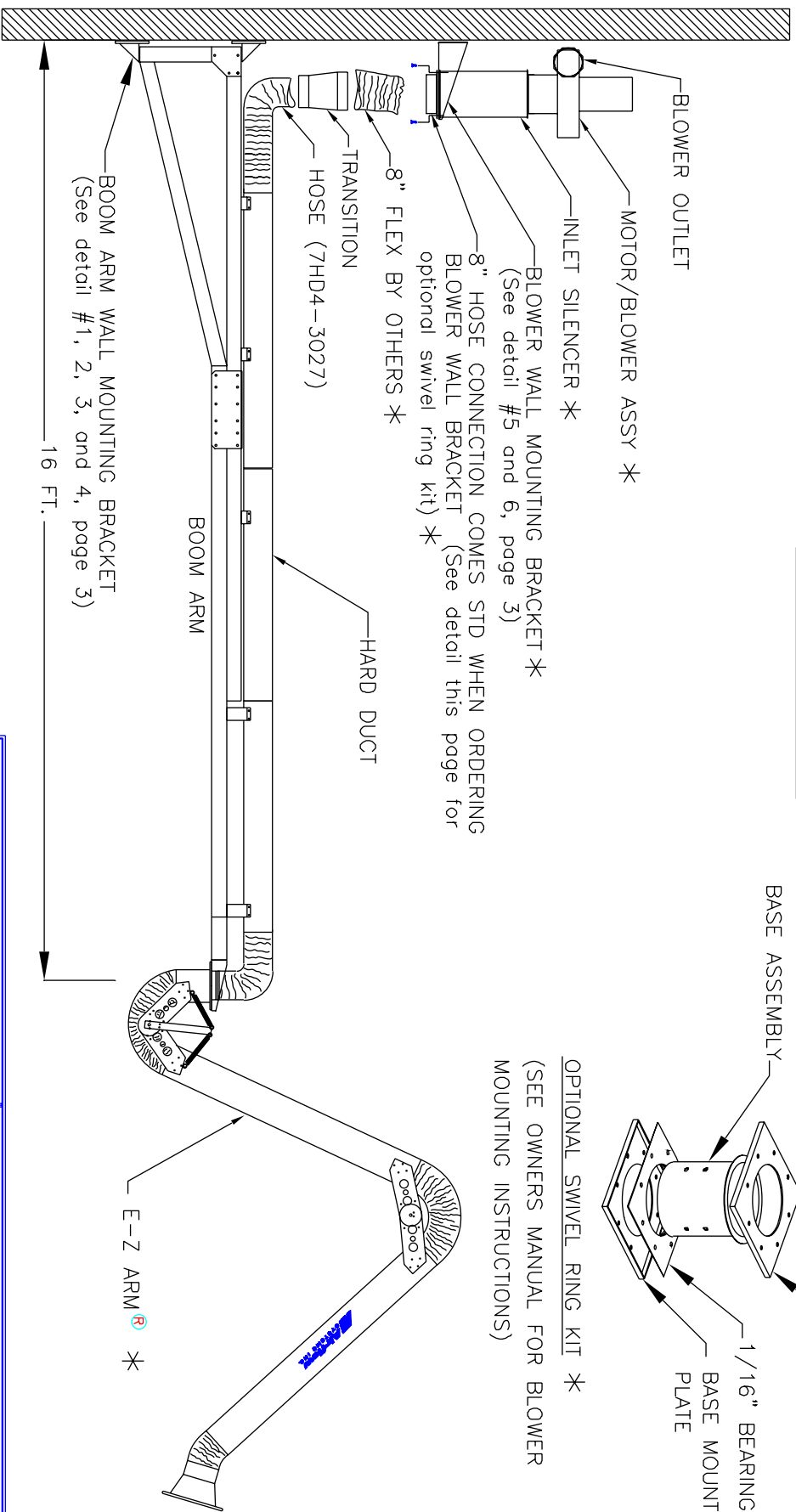
- E-Z ARM® High Flow Extractor arm
- Motor/Blower
- Blower mounting wall bracket
- Silencer
- Swivel ring kit (2KT1-1009)

THE DEVICE DEPICTED AND DESCRIBED
 HEREON EMBODIES PROPRIETARY
 INFORMATION OWNED BY AIRFLOW SYSTEMS,
 INC. ALL DESIGN, MANUFACTURING,
 REPRODUCTION, SALES, AND PATENT RIGHTS
 REGARDING THIS DEVICE OR DRAWING ARE
 RESERVED EXCEPT WHERE EXPLICIT RIGHT
 IS GRANTED IN WRITING.

Diversified Air Systems, Inc.
Phone: 800-264-8958

DRAWN BY CB	TITLE E-Z ARM® BOOM ARMS
DATE 12-21-08	PAGE 1 OF 3
SCALE	DRAWING NO.: E-ZBOOM (56-1934/G)

TYPICAL INSTALLATION, 16' BOOM ARM

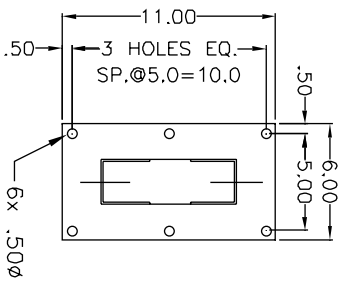


OPTIONAL SWIVEL RING KIT *
(SEE OWNERS MANUAL FOR BLOWER MOUNTING INSTRUCTIONS)

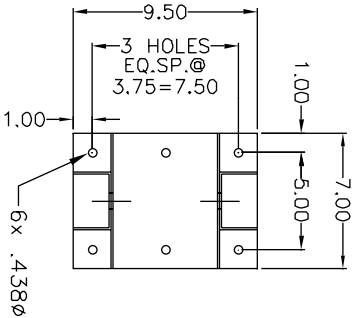
NOTES:
* = ITEMS ORDERED & PRICED SEPARATELY

THE DEVICE DEPICTED AND DESCRIBED HEREON EMBODIES PROPRIETARY INFORMATION OWNED BY AIRFLOW SYSTEMS, INC. ALL DESIGN, MANUFACTURING, REPRODUCTION, SALES, AND PATENT RIGHTS REGARDING THIS DEVICE OR DRAWING ARE RESERVED EXCEPT WHERE EXPLICIT RIGHT IS GRANTED IN WRITING.

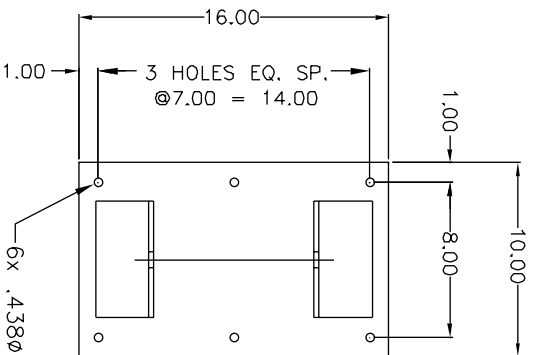
Diversified Air Systems, Inc.	
Phone: 800-264-8958	
DRAWN BY CB DATE 12-21-98 SCALE	TITLE E-Z ARM [®] BOOM ARMS PAGE 2 OF 3 DRAWING NO.: E-ZBOOM (56-1934/G)



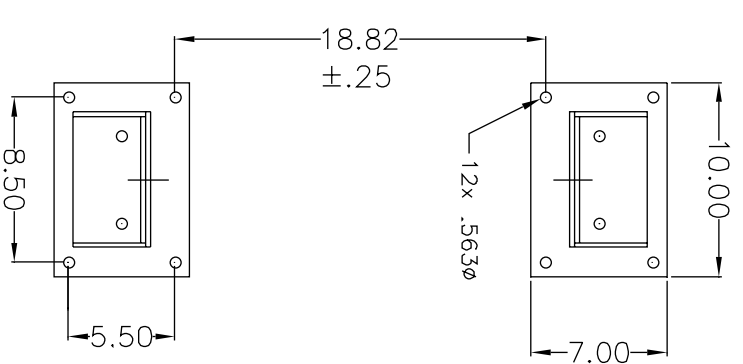
(1) WALL BRACKET MOUNTING PATTERN FOR (4") 5' BOOM



(2) WALL BRACKET MOUNTING PATTERN FOR 5' BOOM

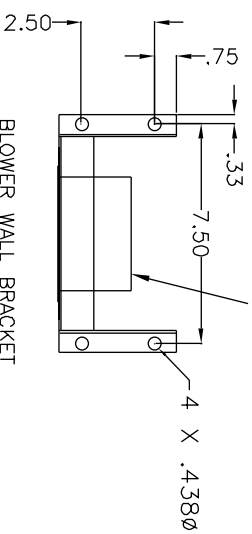


(3) WALL BRACKET MOUNTING PATTERN FOR 10' BOOM

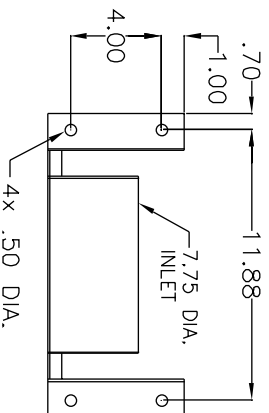


(4) WALL BRACKET MOUNTING PATTERN FOR 16' BOOM

3.88 DIA. RING FOR DUCTING (SUPPLIED WITH ARMS)



(5) BLOWER WALL BRACKET MOUNTING PATTERN FOR 4" ARM (REAR VIEW)



(6) BLOWER WALL BRACKET MOUNTING PATTERN FOR E-Z ARM (REAR VIEW)

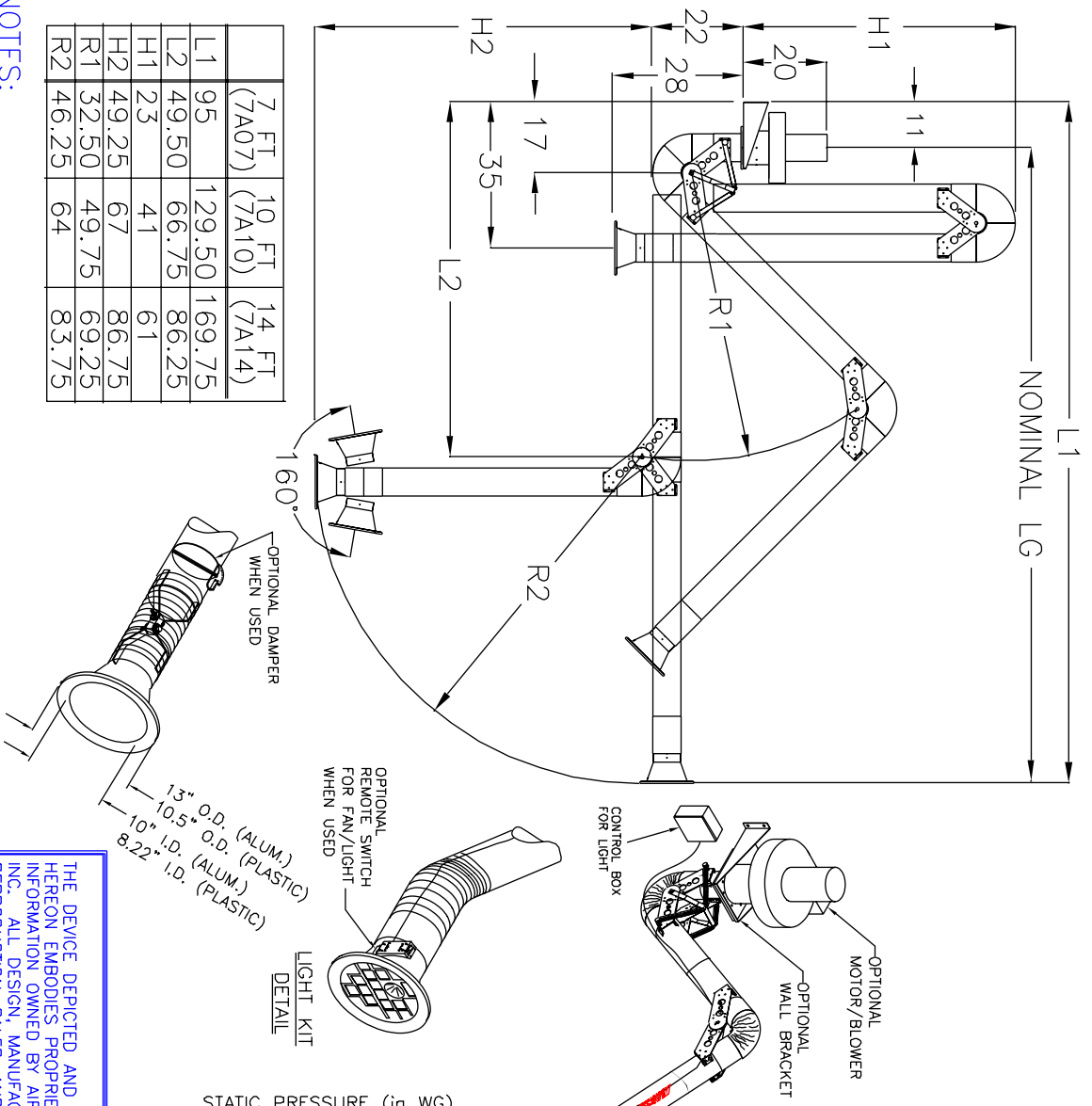
NOTES:
CUSTOMER TO INSURE THAT BOOM ARM MOUNTING STRUCTURE AND ANCHOR DEVICES ARE ADEQUATE TO SUPPORT ANY LOAD(S) AS A RESULT OF THE BOOM AND ARM.

THE DEVICE DEPICTED AND DESCRIBED HEREON EMBODIES PROPRIETARY INFORMATION OWNED BY AIRFLOW SYSTEMS, INC. ALL DESIGN, MANUFACTURING, REPRODUCTION, SALES, AND PATENT RIGHTS REGARDING THIS DEVICE OR DRAWING ARE RESERVED EXCEPT WHERE EXPLICIT RIGHT IS GRANTED IN WRITING.

Diversified Air Systems, Inc.
Phone: 800-264-8958

DRAWN BY
CB
DATE 12-21-98
SCALE

TITLE
E-Z ARM BOOM ARMS
PAGE 3 OF 3
DRAWING NO.: E-ZBOOM (56-1934/G)



	7 FT (7A07)	10 FT (7A10)	14 FT (7A14)
L1	95	129.50	169.75
L2	49.50	66.75	86.25
H1	23	41	61
H2	49.25	67	86.75
R1	32.50	49.75	69.25
R2	46.25	64	83.75

NOTES:
Items designated as are included in this proposal

THE DEVICE DEPICTED AND DESCRIBED HEREON EMBODIES PROPRIETARY INFORMATION OWNED BY AIRFLOW SYSTEMS, INC. ALL DESIGN, MANUFACTURING, REPRODUCTION, SALES, AND PATENT RIGHTS REGARDING THIS DEVICE OR DRAWING ARE RESERVED EXCEPT WHERE EXPLICIT RIGHT IS GRANTED IN WRITING.

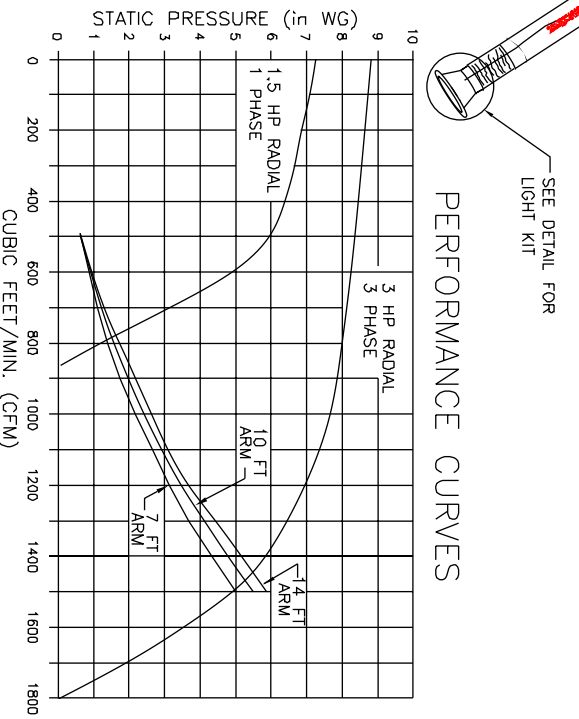
Diversified Air Systems, Inc.
Phone: 800-264-8958

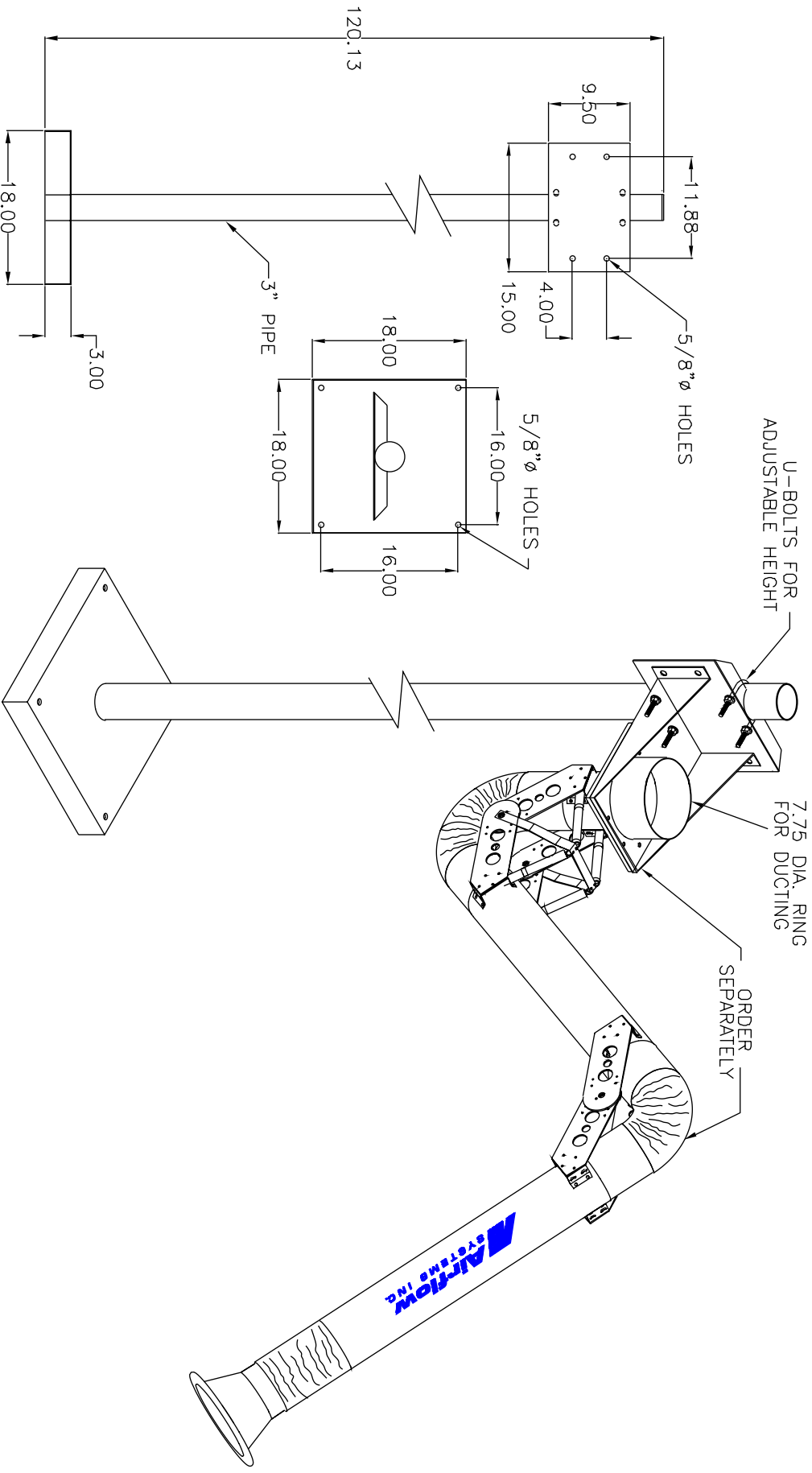
DRAWN BY: CB
DATE: 8-14-00
SCALE: NTS
TITLE: E-Z ARM WITH LIGHT KIT
DRAWING NO.: E-ZWLIT (87-2791/F)

SPECIFICATIONS:
Aluminum tubes connected with a spiral flex duct (UL Rated). Heavy duty aluminum joints with patented friction release system at middle joint, spring balanced ring base joint and universal joint at flanged inlet hood. Includes a 75 watt, 12 volt, high intensity work light that is supported by a grille/rog guard that allows for high air flow.

LENGTH-WEIGHT:
 7 ft. - 36 lbs.
 10 ft. - 40 lbs.
 14 ft. - 45 lbs.

OPTIONS:
 Remote switch
 Damper
 Motor/Blower
 Wall Bracket
 Silencer
 Boom Arms: 5 ft. , 10 ft. , 16 ft.





THE DEVICE DEPICTED AND DESCRIBED
 HEREON EMBODIES PROPRIETARY
 INFORMATION OWNED BY AIRFLOW SYSTEMS,
 INC. ALL DESIGN, MANUFACTURING,
 REPRODUCTION, SALES, AND PATENT RIGHTS
 REGARDING THIS DEVICE OR DRAWING ARE
 RESERVED EXCEPT WHERE EXPLICIT RIGHT
 IS GRANTED IN WRITING.

Diversified Air Systems, Inc.
 Phone: 800-264-8958

DRAWN BY JRS	TITLE ADJUSTABLE STAND
DATE 4-29-98	E-Z ARM
SCALE NTS	DRAWING NO.: FUMESTND (00-1691/D)

NOTES:
 PAINTED BLACK