



F120 Free-Hanging Dust Collector

Features & Benefits

- **Capacities to 3800 CFM:**
Handles toughest industrial applications.
- **Non-electrostatic operation:**
High reliability, low maintenance.
- **Ultra-Seal® filter mounting:**
Eliminates contaminant bypass of filters.
- **High efficiency filter media:**
provides maximum effectiveness; low air-to-cloth ratio
extends cycles between filter changes; filter changes
easily without tools.
- **Prewired to junction box:**
For fast, easy installation.

Dimensions

Width:	25.00"
Height:	26.00"
Depth:	72.00"

Options

- **Class II Direct-Drive BI Blower:**
Higher static pressure, longer filter life and greater
reliability; non-sparking; no belts or pulleys to replace.
- **Pressure Gauge Kit:**
Indicates when filters require cleaning.
- **Silencer:**
Reduces air flow noise for quieter operation.
- **Charcoal Adsorber Modules:**
Refillable modules control gases and odors.
- **HEPA After-Filter:**
provides 99.97% DOP efficiency.
- **Inlet Plenum**

Specifications

Construction:

16 ga. steel cabinet, powder coated

Blower Pkg (HP):

2.0

Noise Level (dBA):

75/69/silencer

79/75 Class II

Electrical:

2.0 HP - 208-230/460/3/60, 6.5/6.2/3.1 amps.

3.0 HP - 208-230/460/3/60, 9.2/8.0/4.0 amps.

2.0 HP - 190/380/3/50

Nominal CFM (in.):

2000-3800

Weight (lbs.):

330

SPECIFICATIONS:

CONSTRUCTION:

16 Ga. welded zinc coated steel cabinet, finished with
o two part chemical and oil resistant paint. Side
access door to filters and motor. Belt driven ball bearing
12x12 blower, 4-way adjustable airflow blade exhaust
grille. Motor wired to junction box outside unit.
Motor starters/disconnects NOT included.

WEIGHT:

300 lbs.

AIRFLOW:
(STD AIR)

3800 CFM

NOISE:

75 dBA / 69 dBA with silencer – std.
79 dBA / 75 dBA with silencer – 3 HP

ELECTRICAL:

- ☐ 2 HP 208-230/460/3/60, 6.5-6.2/3.1 amps, std.
- ☐ HP-3 HP 208-230/460/3/60, 9.2-8.0/4.0 amps, opt.
- ☐ 3 HP 115/230/1/60, 14.5 amps, opt.

FILTER SEAL:

Ultra-Seal™ with positive sealing filter locking
mechanism for all main filters, optional HEPA
filter and adsorber modules (when used). Slide in
tracks shall be used for prefilters only.

FIRE SUPPRESSION: Equipment provided by others.

PREFILTERS:

- ☐ (1) 4" Pleat, std.
- ☐ (1) Aluminum mesh, opt.
- ☐ (1) Chevron filter, opt.

MAIN FILTERS:

- ☐ (1) 120 ft² multi-pocket 65%, std.
- ☐ (1) 95% – opt.
- ☐ (1) Easy clean, opt.

AFTER FILTERS:

- ☐ (1) 4" pleat prefilter followed by (1) 66 ft²,
95% bag filter, which is followed by (1)
99.97% D.O.P. HEPA filter.

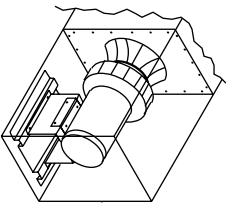
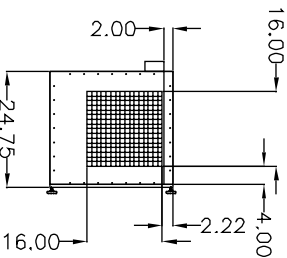
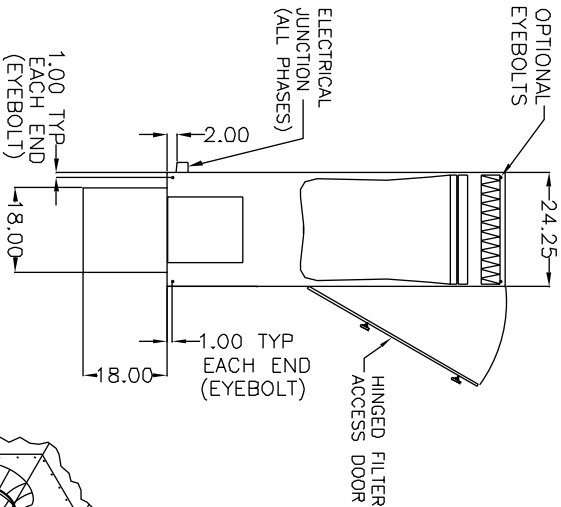
AD OPTION:

- ☐ (1) 4" pleat prefilter followed by (1) 66 ft²,
95% short bag filter, followed by (2)
refillable AD modules, 25 lb. capacity
each, and (1) 2" pleat afterfilter.

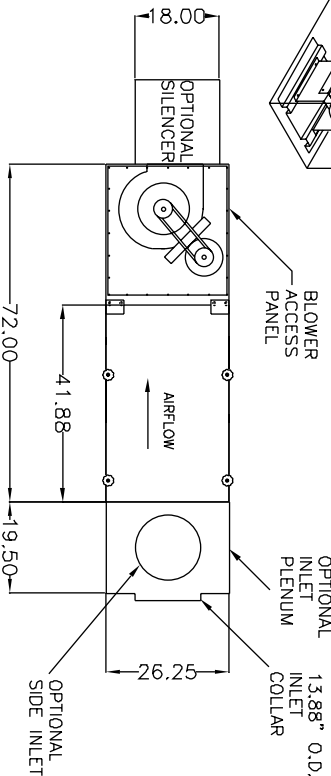
OTHER OPTIONS:

- ☐ Pressure gauge kit indicates filter changes.
- ☐ Inlet plenum.
- ☐ Silencer w/ right angle discharge.
- ☐ Eyebolts

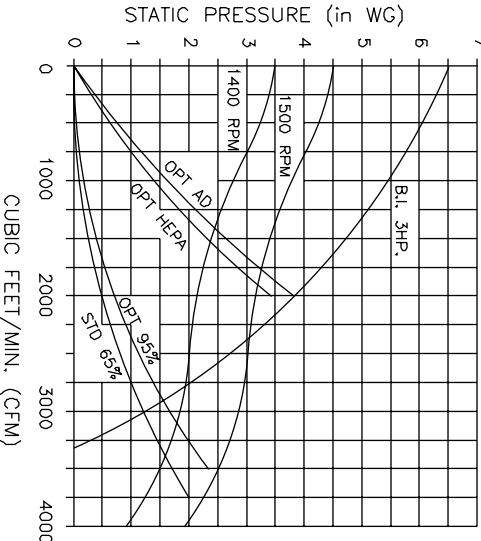
* AFS FILTER EFFICIENCIES BASED ON ASHRAE 52-76 TEST METHOD
* * UNIT CAN BE FLIPPED FOR LEFT TO RIGHT AIRFLOW.



OPTIONAL
3 HP BI BLOWER



PERFORMANCE CURVES



NOTES:

ITEMS DESIGNATED AS ☒ ARE INCLUDED IN THIS PROPOSAL.

SEE PAGE 2 FOR INLET HOLE PATTERN

THE DEVICE DEPICTED AND DESCRIBED
HEREON EMBODIES PROPRIETARY
INFORMATION OWNED BY AIRFLOW SYSTEMS,
INC. ALL DESIGN, MANUFACTURING,
REPRODUCTION, SALES, AND PATENT RIGHTS
REGARDING THIS DEVICE OR DRAWING ARE
RESERVED EXCEPT WHERE EXPLICIT RIGHT
IS GRANTED IN WRITING.

Diversified Air Systems, Inc.

Phone: 800-264-8958

DRAWN BY

CB

TITLE

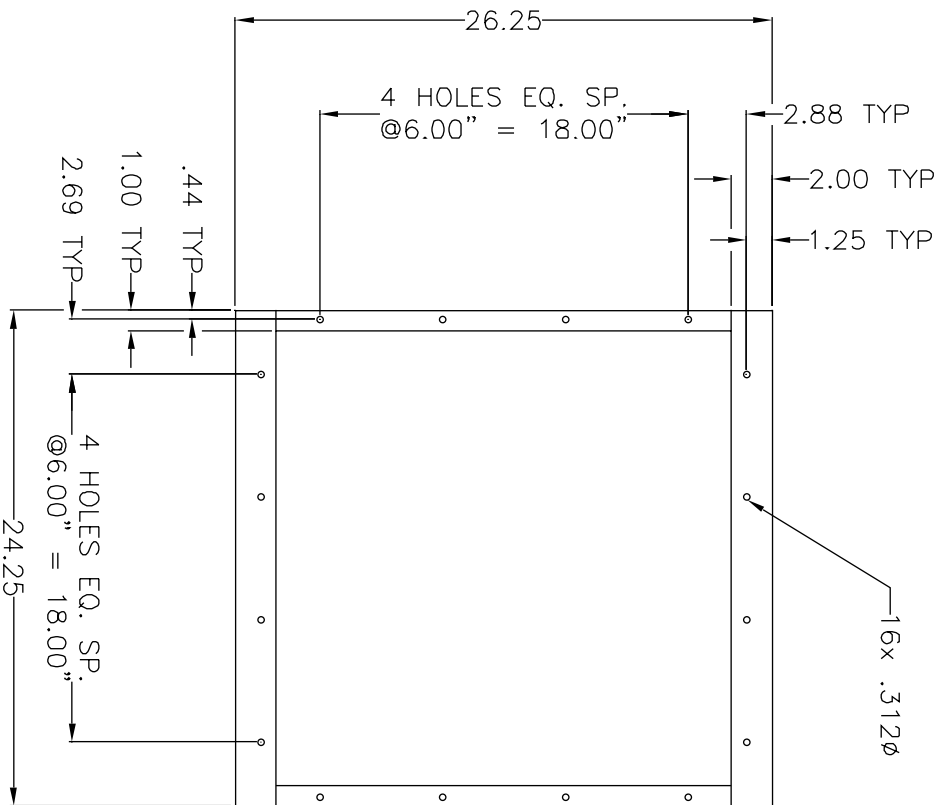
MODEL F120

PAGE 1 OF 2

DATE: 2-23-99

SCALE

DRAWING NO.: F120SPEC (12-2038/H)



INLET VIEW

NOTES:

THE DEVICE DEPICTED AND DESCRIBED
HEREON EMBODIES PROPRIETARY
INFORMATION OWNED BY AIRFLOW SYSTEMS,
INC. ALL DESIGN, MANUFACTURING,
REPRODUCTION, SALES, AND PATENT RIGHTS
REGARDING THIS DEVICE OR DRAWING ARE
RESERVED EXCEPT WHERE EXPLICIT RIGHT
IS GRANTED IN WRITING.

Diversified Air Systems, Inc.
Phone: 800-264-8958

DRAWN BY CB	TITLE MODEL F120
DATE 2-23-99	PAGE 2 OF 2
SCALE	DRAWING NO.: F120SPEC (12-2038/H)