

# F480 Dust Collector



## Features & Benefits

---

- **Capacities to 12000 CFM:**  
Handles toughest industrial applications.
- **Class II Belt-Drive Blower:**  
Higher static pressure, longer filter life and greater reliability; non-sparking; no belts or pulleys to replace.
- **Non-electrostatic operation:**  
High reliability, low maintenance.
- **Ultra-Seal® filter mounting:**  
Eliminates contaminant bypass of filters.
- **High efficiency filter media:**  
Provides maximum effectiveness; low air-to-cloth ratio extends cycles between filter changes; filter chugs easily without tools.
- **Prewired to junction box:**  
For fast, easy installation.

## Dimensions

---

<b>Width:</b>	48.00"
<b>Height:</b>	54.00"
<b>Depth:</b>	70.00"

## Options

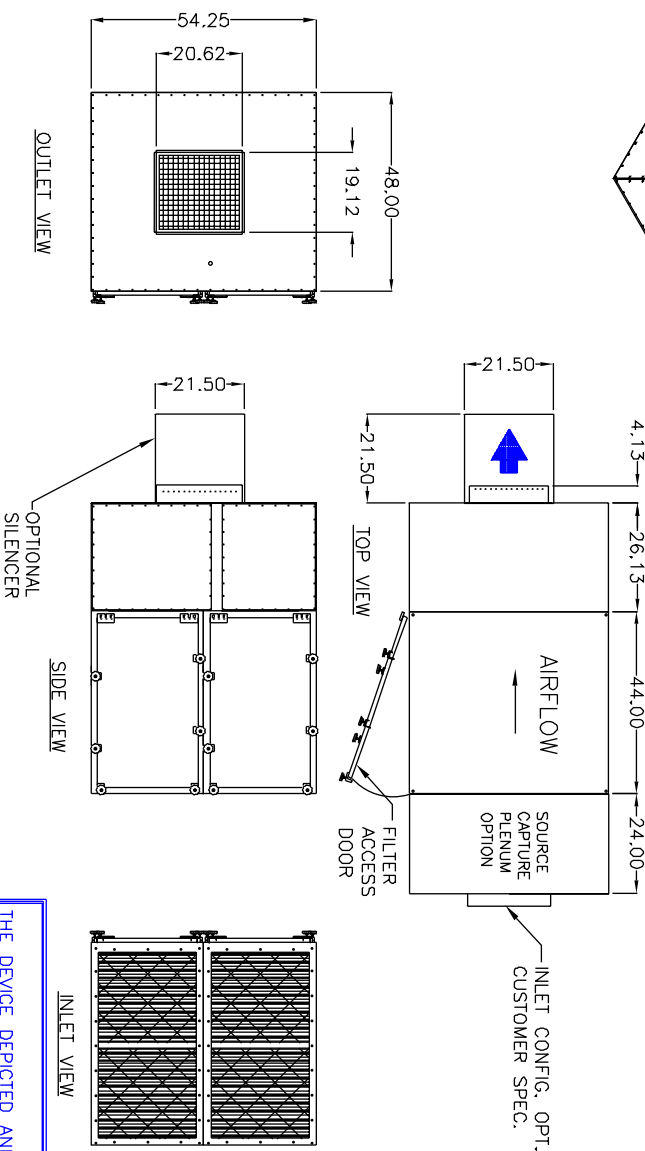
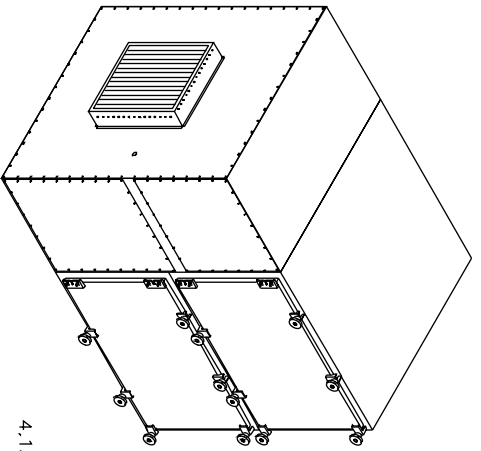
---

- **Pressure Gauge Kit:**  
Indicates when filters require cleaning.
- **Silencer:**  
Reduces air flow noise for quieter operation.
- **Charcoal Adsorber Modules:**  
Refillable modules control gases and odors.
- **HEPA After-Filter:**  
provides 99.97% DOP efficiency.
- **Inlet Plenum**
- **Floor Stand:**  
Allows on-floor mounting when on-machine or hanging mounts are impractical.

## Specifications

---

- **Construction:**  
16 ga. steel cabinet, powder coated
- **Blower Pkg (HP):**  
15.0
- **Noise Level (dBA):**  
86/80 silencer
- **Electrical:**  
15.0 HP - 208-230/460/3/60, 38/19  
15.0 HP - 190/380/3/50, 44/22
- **Nominal CFM (in.):**  
8000-12000
- **Weight (lbs.):**  
1158



**CONSTRUCTION:**

16 Gauge painted steel cabinet with Ultra-Seal™ filter sealing system, quick release hinged filter and motor access door, 1620 rpm belt driven ball bearing Class II blower, with 4-way adjustable orifice blade exhaust grille. Motor wired to junction box outside unit. Motor starters/disconnects not included.

**WEIGHT:**

1158 lbs.

**AIRFLOW:**

12000 CFM  
8000 CFM w/HEPA  
15 HP 230/460/3/60, 36.0/19.0 amps, std.  
15 HP 200/3/60, 42.0 amps, 208V, opt.

**ELECTRICAL:**

86 dBA / 80 dBA Silencer

**NOISE:**

Ultra-Seal™ welded picture frame with positive sealing filter locking mechanism for all main filters. HEPA filter and odorizer modules (where used). Slide in tracks shall be used for prefilters only.

**FILTER SEAL:**

Equipment provided by others.

**SPECIFICATIONS:**

**PREFILTERS:**

- (4) 4" Pleat, 30%, std.
- (4) Aluminum mesh, opt.
- (4) Chevron filter, opt.
- (1) Auto-Roll, opt.

**MAIN FILTERS:**

- (4) 120 ft<sup>2</sup> multi-pocket 65%, std.
- (4) 95% - opt.
- (4) Easy clean, opt.

**AFTER FILTERS:**

- (4) 4" pleated prefilters followed by (4) 66 ft<sup>2</sup>, 95% bag filters, and (4) 99.97% HEPA filters.
- (4) 95% D.O.P. HEPA, opt.

**AD OPTION:**

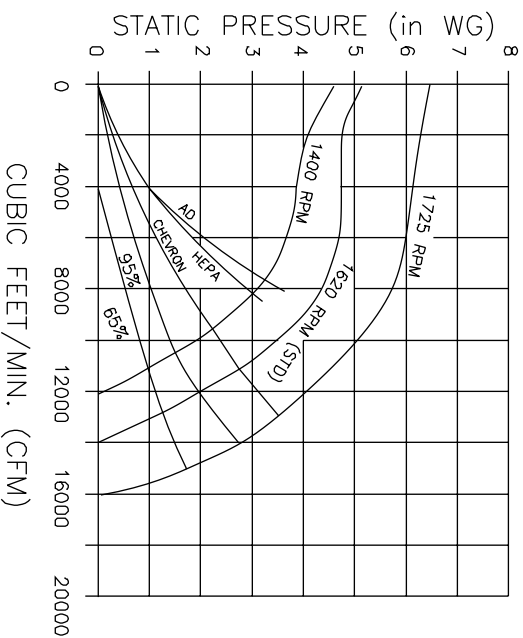
- (4) 4" pleated prefilters, followed by (4) 66 ft<sup>2</sup>, 95% bag filters, (8) refillable AD modules, 25 lb capacity each, and (4) 2" pleated afterfilters.

**OTHER OPTIONS:**

- Pressure gauge kit indicates filter changes
- Source capture plenum
- Silencer, 3/4" NPT
- Drains, 3/4" NPT
- 1400 rpm Blower - Free hanging
- 1725 rpm Blower - High static

\* AFS FILTER EFFICIENCIES BASED ON ASHRAE 52-76 TEST METHOD

**PERFORMANCE CURVES**



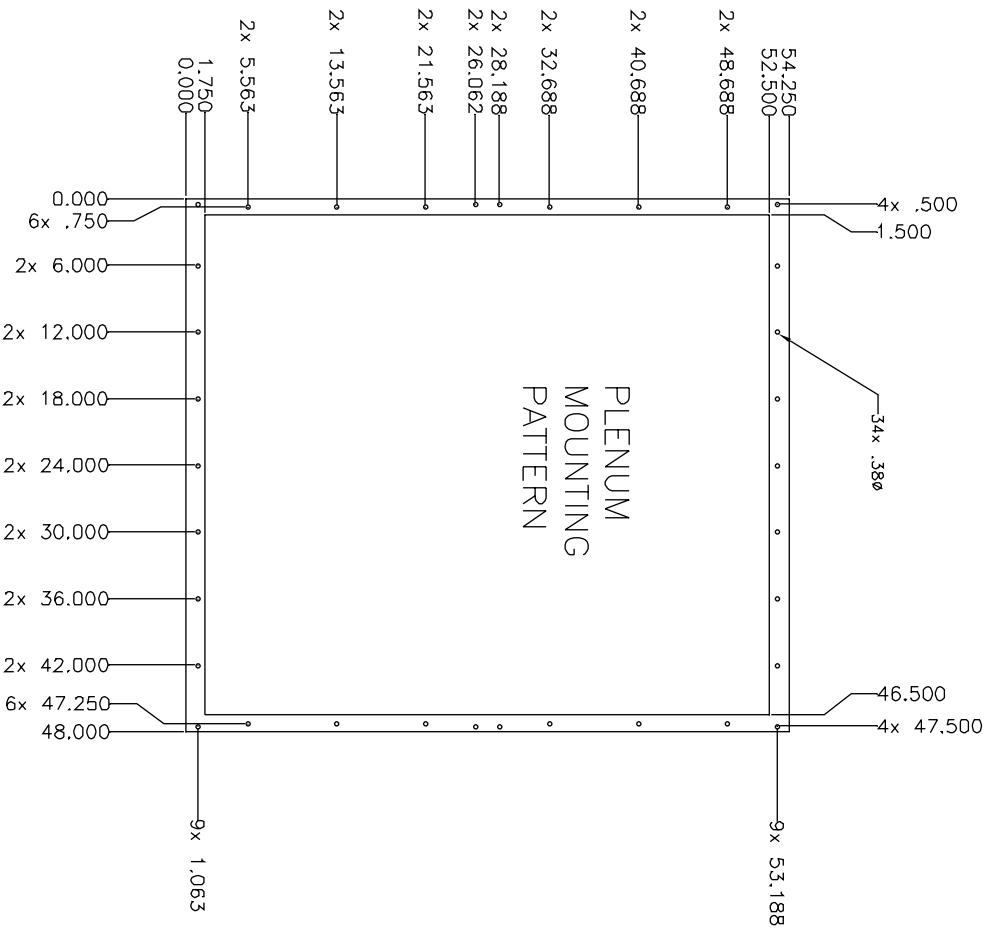
**NOTES:**  
ITEMS DESIGNATED AS  ARE INCLUDED IN THIS PROPOSAL.

THE DEVICE DEPICTED AND DESCRIBED HEREON EMBODIES PROPRIETARY INFORMATION OWNED BY AIRFLOW SYSTEMS, INC. ALL DESIGN, MANUFACTURING, REPRODUCTION, SALES, AND PATENT RIGHTS REGARDING THIS DEVICE OR DRAWING ARE RESERVED EXCEPT WHERE EXPLICIT RIGHT IS GRANTED IN WRITING.

**Diversified Air Systems, Inc.**  
Phone: 800-264-8958

DRAWN BY: CB  
DATE: 6-24-99  
SCALE: NTS

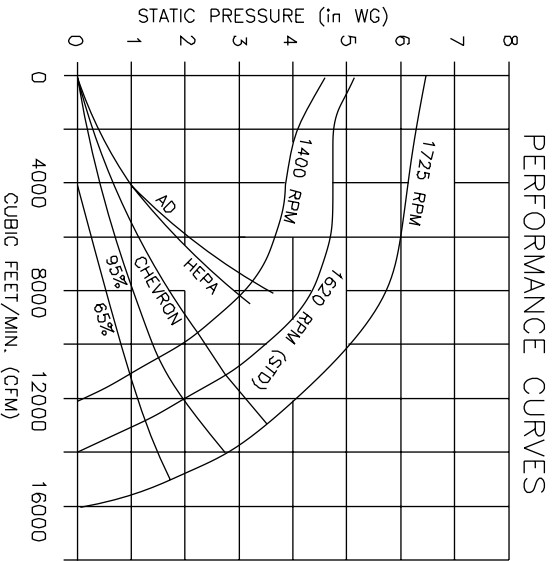
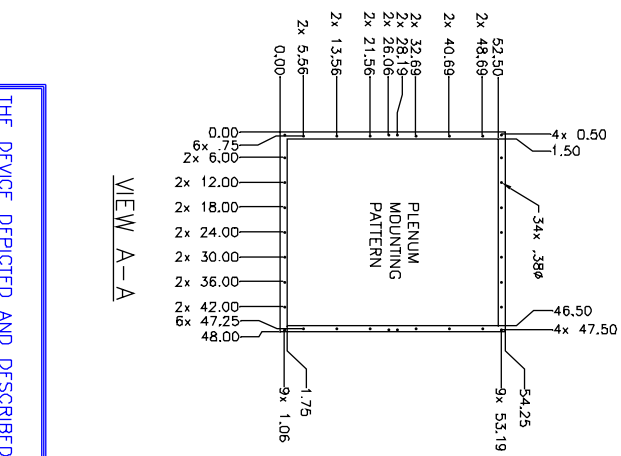
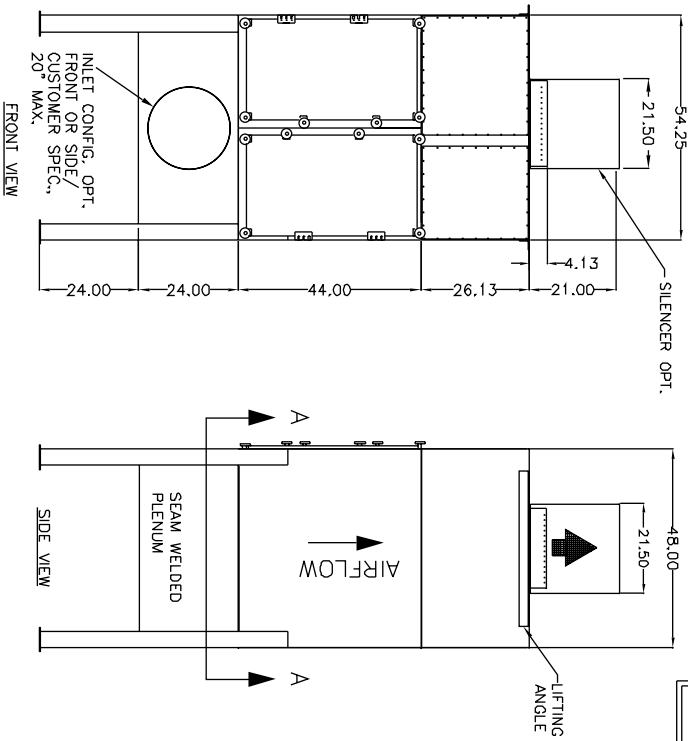
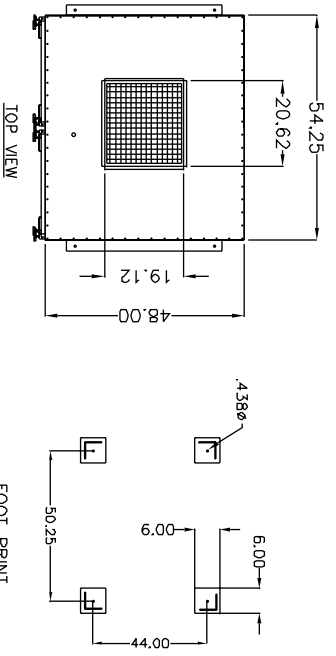
TITLE: MODEL F480  
PAGE 1 OF 2  
DRAWING NO.: F480SPEC (48-2212/E)



**NOTES:**

THE DEVICE DEPICTED AND DESCRIBED  
HEREON, EMBODIES PROPRIETARY  
INFORMATION OWNED BY AIRFLOW SYSTEMS,  
INC. ALL DESIGN, MANUFACTURING,  
REPRODUCTION, SALES, AND PATENT RIGHTS  
REGARDING THIS DEVICE OR DRAWING ARE  
RESERVED EXCEPT WHERE EXPLICIT RIGHT  
IS GRANTED IN WRITING.

<b>Diversified Air Systems, Inc.</b> <b>Phone: 800-264-8958</b>	
DRAWN BY CB	TITLE MODEL F480
DATE 6-24-99	PAGE 2 OF 2
SCALE	DRAWING NO.: F480SPEC (48-2212/E)



**SPECIFICATIONS:**

**CONSTRUCTION:**  
16 Gauge painted steel cabinet with Ultra-Seal® filter sealing system. Includes quick release hinged filter and motor access door, seam welded plenum, and a 1620 rpm belt driven, ball bearing, Class II blower w/4-way adjustable airfoil blade exhaust grille. Motor wired to junction box outside unit. Motor starters/disconnects not included.

**WEIGHT:**  
1158 lbs.

**AIRFLOW:**  
12000 CFM w/HEPA  
8000 CFM w/HEPA

**ELECTRICAL:**  
15 HP 230/460/3/60, 38.0/19.0 amps, std.  
15 HP 200/3/60, 42.0 amps, 208V, opt.

**FILTER SEAL:**  
Ultra-Seal® welded picture frame with positive sealing filter locking mechanism for all main filters, HEPA filter and odorizer modules (where used). Slide in tracks shall be used for prefilters only

**FIRE SUPPRESSION:** Equipment provided by others.

**PREFILTERS:**  
 (4) 4" Pleat, 30%, std.  
 (4) Aluminum Mesh, opt.  
 (4) Chevron® filter, opt.  
 (1) Auto Roll, opt.

**MAIN FILTERS:**  
 (4) 120 ft<sup>2</sup> multi-pocket 65%, std.  
 (4) 95% - opt.  
 (4) Easy clean, opt.

**AFTER FILTERS:**  
 (4) 4" pleated prefilters followed by (4) 66 ft<sup>2</sup>, 95% D.O.P., HEPA, opt.  
 (4) 95% D.O.P., HEPA, opt.  
 (4) 4" pleated prefilters followed by (4) 66 ft<sup>2</sup>, 95% bag filters, (8) reliable AD modules, 25 lb capacity each, and (4) 2" pleated afterfilters.

**AD OPTION:**  
 (4) 4" pleated prefilters followed by (4) 66 ft<sup>2</sup>, 95% bag filters, (8) reliable AD modules, 25 lb capacity each, and (4) 2" pleated afterfilters.

**OTHER OPTIONS:**  
 Pressure gauge kit indicates filter changes  
 Sterner  
 3/4" NPT Drain  
 1400 rpm Blower - Free hanging  
 1175 rpm Blower - High static

\* AFS FILTER EFFICIENCIES BASED ON ASHRAE 52-76 TEST METHOD

**NOTES:**  
ITEMS DESIGNATED AS  ARE INCLUDED IN THIS PROPOSAL.

THE DEVICE DEPICTED AND DESCRIBED HEREON EMBODIES PROPRIETARY SYSTEMS, INFORMATION OWNED BY AIRFLOW SYSTEMS, INC. ALL DESIGN, MANUFACTURING, REPRODUCTION, SALES, AND PATENT RIGHTS REGARDING THIS DEVICE OR DRAWING ARE RESERVED EXCEPT WHERE EXPLICIT RIGHT IS GRANTED IN WRITING.

**Diversified Air Systems, Inc.**  
**Phone: 800-264-8958**

**MODEL F480 VERTICAL**

**DRAWN BY:** CB  
**DATE:** 3-8-01  
**SCALE:**

**TITLE:** MODEL F480 VERTICAL  
**DRAWING NO.:** F480VSPC (48-3084/E)