



MP30 Mist Collector

Features & Benefits

- **Exclusive Mist-Plus™ Containment Management System:**
Delivers over 95% filtration efficiency; reduces operating costs by extending maintenance cycles and filter life.
- **Welded steel cabinet:**
Eliminates contaminant escape common with bolt-on panel cabinets.
- **Baked-on powder coat finish:**
Resists harsh industrial environments.
- **Front access filter door:**
Eases filter access; reduces filter maintenance and changeout time.
- **Sloped drain pan.**
Facilitates reclamation of captured oil mist.
- **Ultra-Seal® filter mounting:**
Eliminates contaminant bypass of filters.
- **Small footprint:**
Compact, 4 ft² cabinet requires minimal floor space; eases machine and wall mounting.
- **Continuous draining:**
Provides for longer filter life.

Specifications

Construction:

16 ga. zinc coated welded steel, powder coated cabinet

Blower Pkgs (HP):

5.0, 3.0

Noise Level (dBA):

78

Electrical:

5.0 HP - 208-230/460/575/3/60, 12.0/6.0 amps, std.

3.0 HP - 208/230/1/60, 24.5 amps,

208-230/460/575/3/60, 9.2-8.0/4.0 amps,

3.0 HP - 190/380/3/50, 11.3/5.65 amps.

Nominal CFM (in.):

3300 CFM, 5 HP

2500 CFM, 3 HP

2700 CFM, 50 Hz

Weight (lbs.):

350

Dimensions

Width:	26.00"
Height:	69.00"
Depth:	25.00"

Options

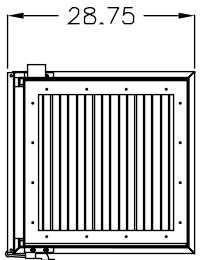
- **Pressure Gauge Kit:**
Indicates when filters require cleaning.
- **Pre-Filters:**
2-in. polyester pad.
- **After-Filters:**
99.97% HEPA, 95% DOP and odor modules.
- **Drain Loop Kit:**
Simplifies collection and reclamation on captured oil mist while providing drain line air seal.
- **24-in. Floor Stand:**
Stabilizes floor-mounted units; eases unit and facility maintenance.
- **3 HP Blower Assembly:**
Reduces air flow to 2500 CFM.

Diversified Air Systems, Inc.

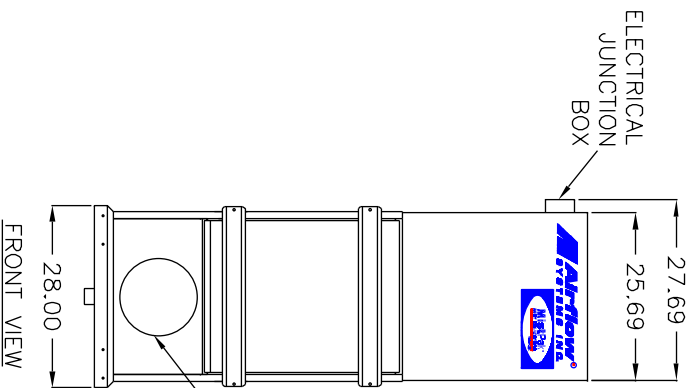
Phone: 800-264-8958

Email: info@divers-air.com

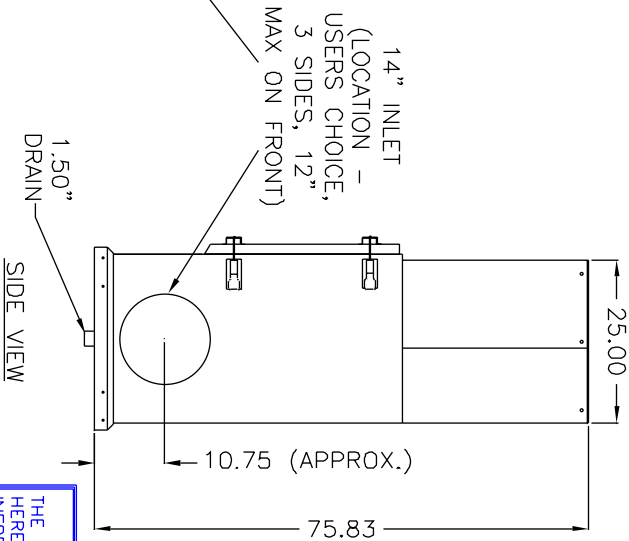
www.divers-air.com



TOP VIEW



FRONT VIEW



SIDE VIEW

14" INLET
(LOCATION -
USERS CHOICE,
3 SIDES, 12"
MAX ON FRONT)

CONSTRUCTION:

16 Gauge welded cabinet with zinc coated steel and Powder-Coat Finish. Includes a hinged filter access door, 14" max. inlet collar (mounted on side or back, 12" max. front), a 1.5" drain, Ultra-Seal® filter mounting system, and a direct drive motor/blower assembly. Circuit and motor over-load protection by others.

WEIGHT:

350 lbs.

AIRFLOW:

3000 CFM, 5 HP
2400 CFM, 3 HP
2000 CFM (HEPA OPTION)

ELECTRICAL:

- 5 HP 208-230/460/575/3/60, 12.0/6.0 amps, std.
- 3 HP 208-230/460/575/3/60, 9.2-8.0/4.0 amps, opt.
- 3 HP 220/380/3/50, 11.3/5.65 amps, opt.

NOISE:

78 dBA

FILTER SEAL:

Ultra-Seal® positive sealing filter locking mechanism for all main filters.

FIRE SUPPRESSION:

Equipment provided by others.

SPECIFICATIONS:

PRE-FILTERS:

- (1) 2" aluminum mesh, std.
- (1) 2" polyester prefilter, opt.

MAIN FILTERS:

- (4) Mist-Plus™ filters, std.

UNIT EFFICIENCY:

90% Minimum on U.N.C. Oil Mist Test.

AFTER FILTERS:

- (1) 4" 95% D.O.P. filter, opt.
- (1) 4", 99.97% HEPA filter, (2000 CFM) opt.

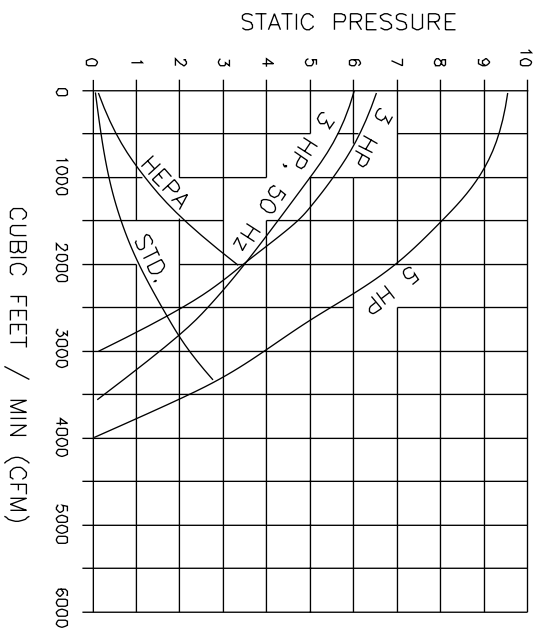
AD-OPTION:

- (2) 12" v-bank refillable odor sorber module, 25 lb. capacity ea.

OTHER OPTIONS:

- Pressure gauge kit indicates filter changes
- 24" Leg Stand
- External D.O.P. or AD (top discharge)
- Drain loop

PERFORMANCE CURVES



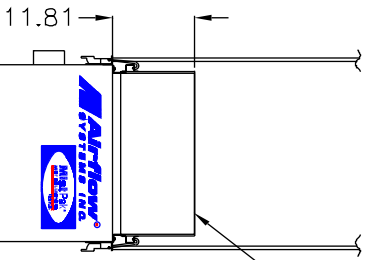
NOTES:

ITEMS DESIGNATED AS ARE INCLUDED IN THIS PROPOSAL.

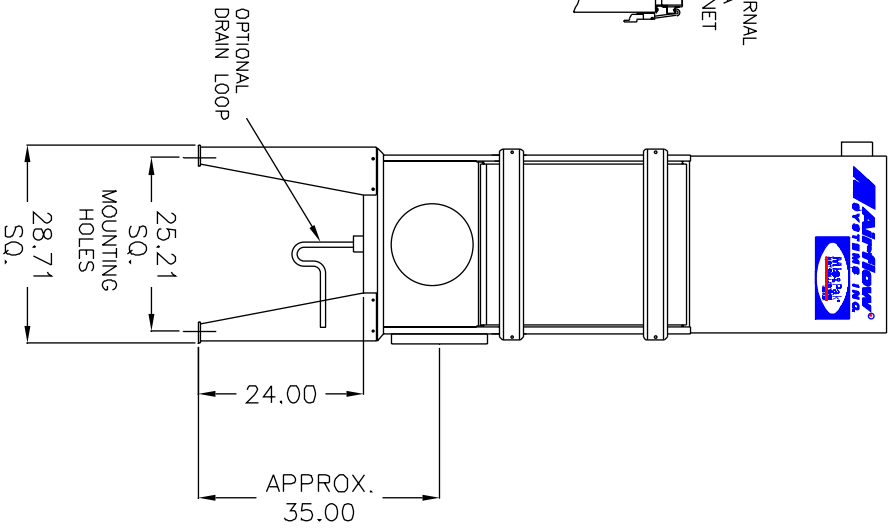
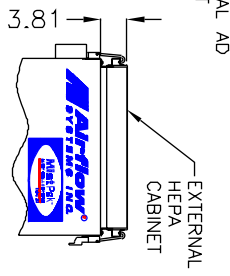
THE DEVICE DEPICTED AND DESCRIBED HEREON EMBODIES PROPRIETARY INFORMATION OWNED BY AIRFLOW SYSTEMS, INC. ALL DESIGN, MANUFACTURING, REPRODUCTION, SALES, AND PATENT RIGHTS REGARDING THIS DEVICE OR DRAWING ARE RESERVED EXCEPT WHERE EXPLICIT RIGHT IS GRANTED IN WRITING.

Diversified Air Systems, Inc.
Phone: 800-264-8958

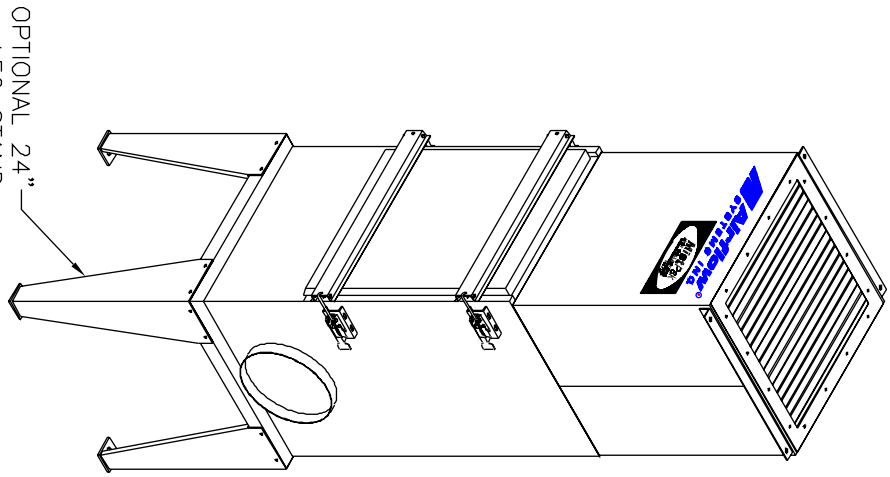
DRAWN BY: CB DATE: 9-25-00 SCALE: NTS	TITLE: MODEL MP30 PAGE 1 OF 2 DRAWING NO.: MP30SPEC (75-2852/D)
---	---



BASIC CONFIGURATION -
CEILING HUNG



OPTIONAL STAND
AND DRAIN LOOP



THE DEVICE DEPICTED AND DESCRIBED
HEREON EMBODIES PROPRIETARY
INFORMATION OWNED BY AIRFLOW SYSTEMS,
INC. ALL DESIGN, MANUFACTURING,
REPRODUCTION, SALES, AND PATENT RIGHTS
REGARDING THIS DEVICE OR DRAWING ARE
RESERVED EXCEPT WHERE EXPLICIT RIGHT
IS GRANTED IN WRITING.

Diversified Air Systems, Inc.
Phone: 800-264-8958

DRAWN BY CB	TITLE MODEL MP30
DATE 9-25-00	PAGE 2 OF 2
SCALE NTS	DRAWING NO.: MP30SPEC (75-2852/D)

NOTES: