



MP60 Mist Collector

Features & Benefits

- **Exclusive Mist-Plus™ Containment Management System:**
Delivers over 95% filtration efficiency; reduces operating costs by extending maintenance cycles and filter life.
- **Welded steel cabinet:**
Eliminates contaminant escape common with bolt-on panel cabinets.
- **Baked-on powder coat finish:**
Resists harsh industrial environments.
- **Front access filter door:**
Eases filter access; reduces filter maintenance and changeout time.
- **Sloped drain pan.**
Facilitates reclamation of captured oil mist.
- **Ultra-Seal® filter mounting:**
Eliminates contaminant bypass of filters.
- **24-in. Floor Stand:**
Stabilizes floor-mounted units; eases unit and facility maintenance.
- **Continuous draining:**
Provides for longer filter life.

Dimensions

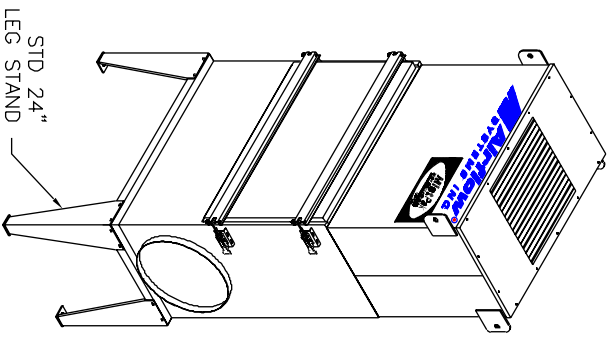
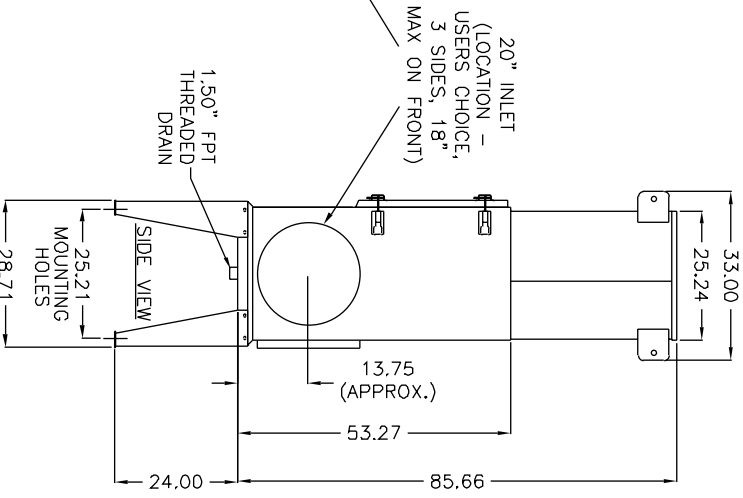
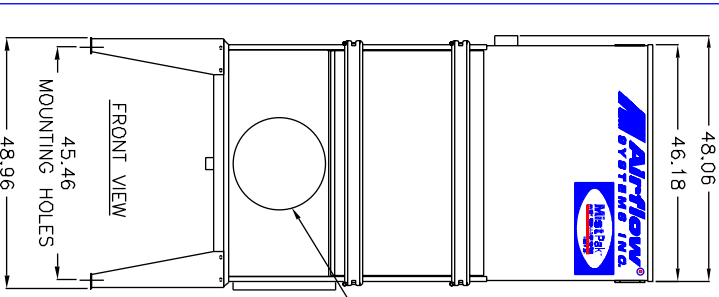
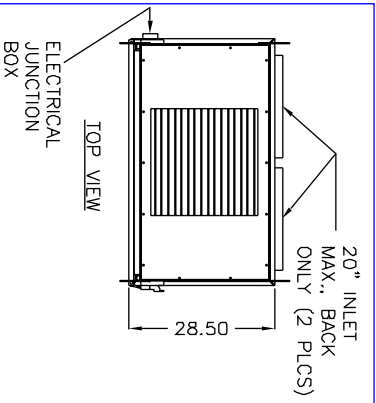
Width:	46.00"
Height:	82.00"
Depth:	25.00"

Options

- **Pressure Gauge Kit:**
Indicates when filters require cleaning.
- **Pre-Filters:**
2-in. polyester pad.
- **After-Filters:**
99.97% HEPA, 95% DOP and odor modules.
- **Drain Loop Kit:**
Simplifies collection and reclamation on captured oil mist while providing drain line air seal.
- **Adsorption Modules:**
12-in. v-bank refillable after-filters.

Specifications

- **Construction:**
12 ga. zinc coated welded steel, powder coated cabinet
- **Blower Pkgs (HP):**
10
- **Noise Level (dBA):**
78
- **Electrical:**
10.0 HP - 208-230/460/575/3/60, 24.0/12.0 amps, std.
10.0 HP - 140/380/3/50, 26/13 amps.
- **Nominal CFM (in.):**
6000, 60 Hz
4800, 50 Hz
- **Weight (lbs.):**
771



CONSTRUCTION:
16 Gauge welded cabinet with zinc coated steel and Powder-Coat Finish. Includes a hinged filter access door, 20" max. inlet collar (mounted on sides), sloped bottom sump with a 1.5" FPT threaded drain, Ultra-Seal® filter mounting system, 24" leg stand, and a direct drive, backward inclined motor/blower assembly. Circuit and motor over-load protection by others. Acoustical lining standard in blower compartment.

WEIGHT:
771 lbs.

AIRFLOW:
6,000 CFM, B1 Blower @ 3450 rpm

ELECTRICAL:
10 HP 208-230/460/575/3/60, 24/12/6/9.5 amps, std.

NOISE:
78 dBA

FILTER SEAL:
Ultra-Seal® positive sealing filter locking mechanism for all main filters.

FIRE SUPPRESSION:
Equipment provided by others.

SPECIFICATIONS:

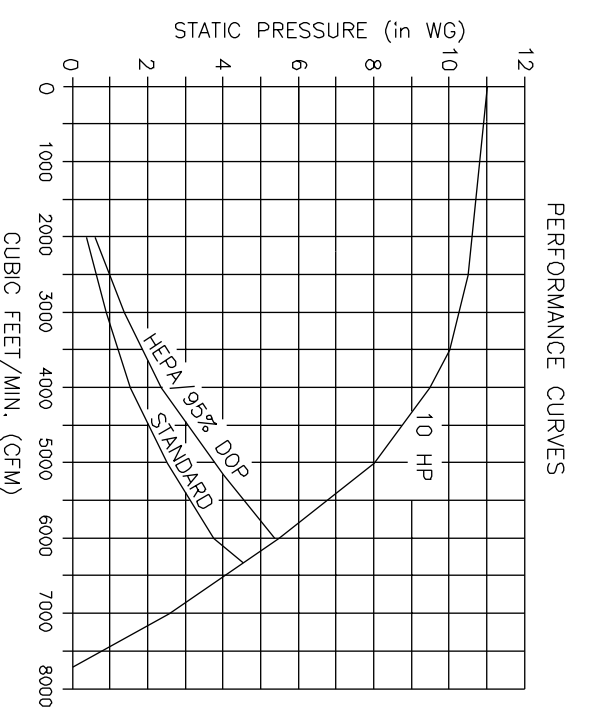
PREFILTERS:
 (1) 2" aluminum mesh, std.
 (2) 2" polyester prefilter, opt.

MAIN FILTERS:
 (8) Mist-Plus™ filters, std.

UNIT EFFICIENCY:
95% Minimum on U.N.C. Oil Mist Test.

AFTER FILTERS:
 (3) 4" 95% D.O.P. filter, opt.
 (3) 4" 99.97% HEPA filter, (Rated 2000 CFM, ea.) opt.

OTHER OPTIONS:
 Pressure gauge kit indicates filter changes
 Drain loop, 1.5 NPT



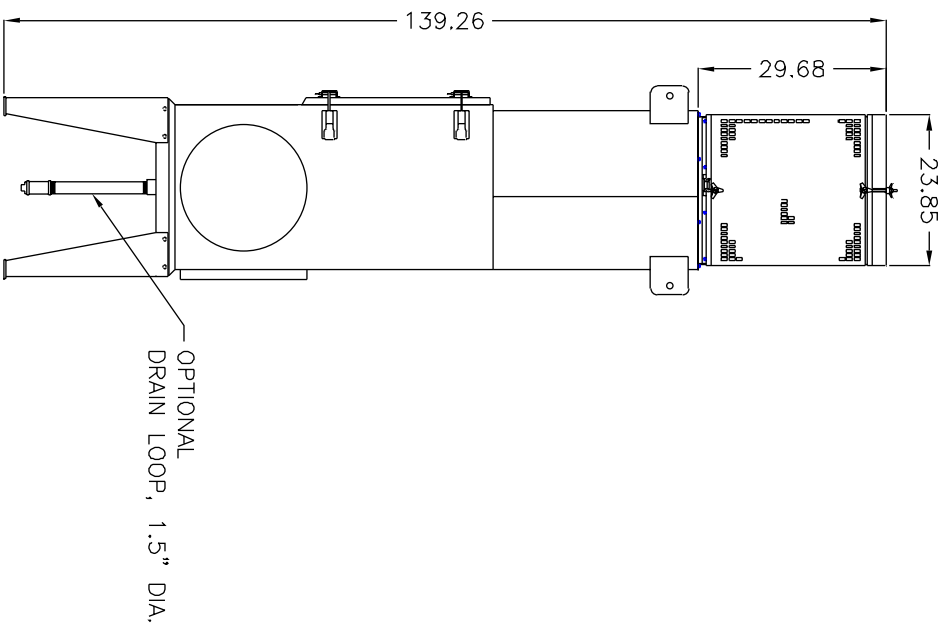
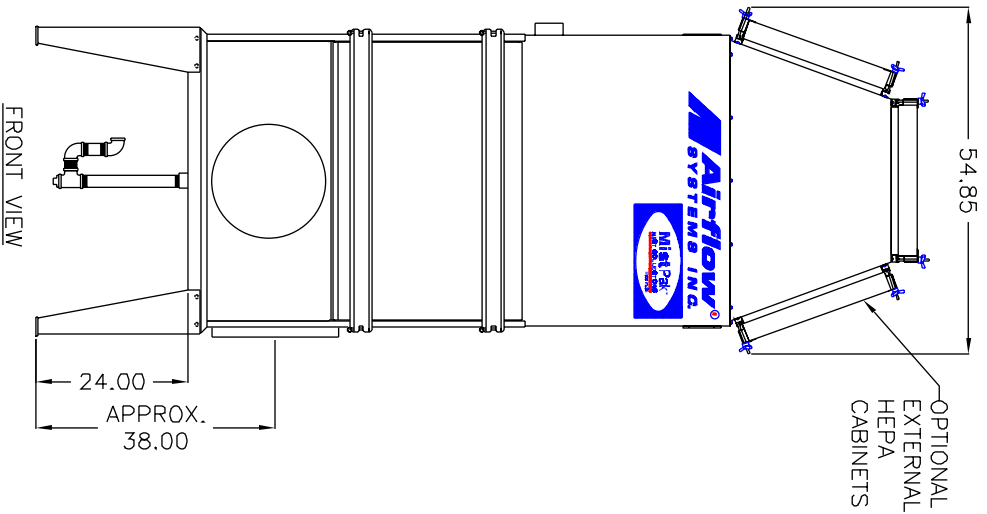
NOTES:
ITEMS DESIGNATED AS ARE INCLUDED IN THIS PROPOSAL.

THE DEVICE DEPICTED AND DESCRIBED HEREON EMBODIES PROPRIETARY INFORMATION OWNED BY AIRFLOW SYSTEMS, INC. ALL DESIGN, MANUFACTURING, REPRODUCTION, SALES, AND PATENT RIGHTS REGARDING THIS DEVICE OR DRAWING ARE RESERVED EXCEPT WHERE EXPLICIT RIGHT IS GRANTED IN WRITING.

Diversified Air Systems, Inc.
Phone: 800-264-8958

DRAWN BY: CB
DATE: 2-5-01
SCALE: NTS

TITLE: MODEL MP60
PAGE 1 OF 2
DRAWING NO.: MP60SPEC (82-3049/A)



THE DEVICE DEPICTED AND DESCRIBED
HEREON EMBODIES PROPRIETARY
INFORMATION OWNED BY AIRFLOW SYSTEMS,
INC. ALL DESIGN, MANUFACTURING,
REPRODUCTION, SALES, AND PATENT RIGHTS
REGARDING THIS DEVICE OR DRAWING ARE
RESERVED EXCEPT WHERE EXPLICIT RIGHT
IS GRANTED IN WRITING.

Diversified Air Systems, Inc.
Phone: 800-264-8958

DRAWN BY CB	TITLE MODEL MP60
DATE 2-5-01	PAGE 2 OF 2
SCALE NTS	DRAWING NO.: MP60SPEC (82-3049/A)

NOTES: