

# V410 High Vacuum Dust Collector



## Features & Benefits

---

- **Continuous-duty blower:**  
Provides longer life and greater reliability.
- **Non-electrostatic operation:**  
High reliability, low maintenance.
- **Over 99% efficient collection:**  
Simplifies OSHA and insurance compliance.
- **Vibra-Pulse® Filter Cleaning System:**  
Cleans filters 75% more effectively than reverse pulse systems.
- **Easy filter backflush:**  
Push-button operation eliminates cleanup hassle and reduces downtime.

## Dimensions

---

Width:	28.00"
Height:	68.00"
Depth:	33.00"

## Options

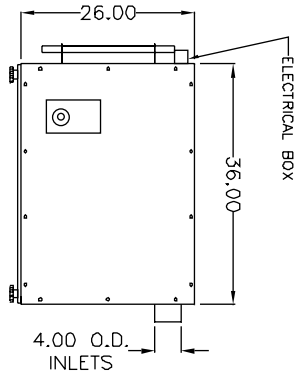
---

- **Silencers:**  
Reduces noise by 5 dBA.
- **HEPA High Efficiency After-Filter:**  
Provides 99.97% filtration efficiency.
- **Auto-Clean Timed Backflush System:**  
Automatically cleans filters while unit is operating.
- **Hopper with Floor Stand:**  
For 5-gallonlon pail.
- **Cyclone Prefilter**
- **Regulator**

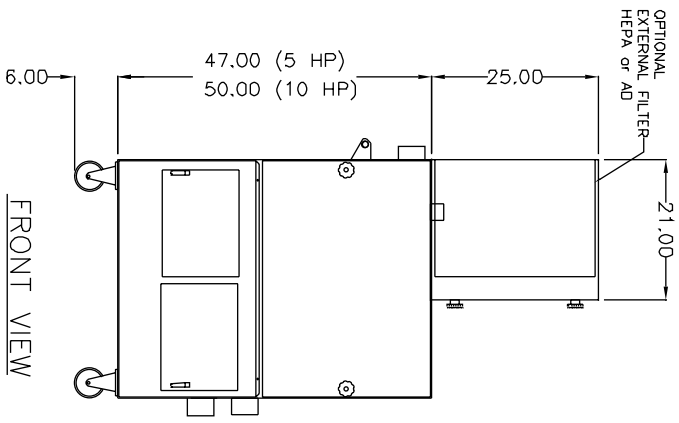
## Specifications

---

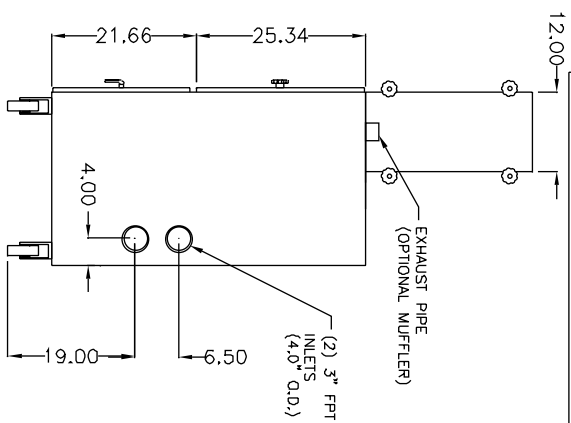
- **Construction:**  
14/12 ga. steel cabinet, powder coated
- **Blower Pkgs (HP):**  
5.0, 10.0
- **Noise Level (dBA):**  
77
- **Electrical:**  
5.0 HP - 208/230/460/ 13/12/6  
10.0 HP - 208-230/460/3/60, 27-25/12 amps, std.  
10.0 HP - 140/380/3/50
- **Nominal CFM (in.):**  
510 60 Hz  
400 50 Hz
- **Weight (lbs.):**  
680



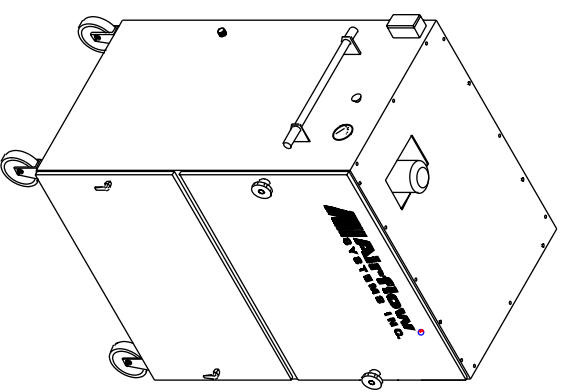
TOP VIEW



FRONT VIEW



SIDE VIEW



**SPECIFICATIONS:**

**CONSTRUCTION:** 12 Gauge steel cabinet finished with a 2-part chemical and oil resistant finish. Includes front access doors to filters and motor, removable 8" deep dust pan, 5" swivel casters, and self-cleaning Vibro-Pulse backflush system. Motor wired to junction box outside unit. Motor starters/disconnects not included.

**WEIGHT:** 680 lbs.

**AIRFLOW:** 510 CFM, 93" wg max (10 HP, 60 HZ)  
390 CFM, 83" wg max (10 HP, 50 HZ)  
280 CFM, 85" wg max (5 HP, 60 HZ)

**NOISE:** 77 dBA / 72 dBA with muffler

**ELECTRICAL:** 10 HP 208-230/460/3/60, 27.5-27.2/13.6 amps, std.  
10 HP 190/380/3/50, 27/13.5 amps, opt.  
5 HP 208-230/460/3/60, 12.0/6.0 amps, opt.

**FILTER SEAL:** Positive sealing filter locking mechanism for all main filters. Requires no tools.

**MAIN FILTERS:**

- (2) CLEAN 2" cartridges-16"x11.50", 150 ft.<sup>2</sup> ea., std.
- (2) Fiber Dust™ cartridge, opt.

**AFTER FILTERS:**

- (1) External HEPA filter, 99.97%, opt.

**AD OPTION:**

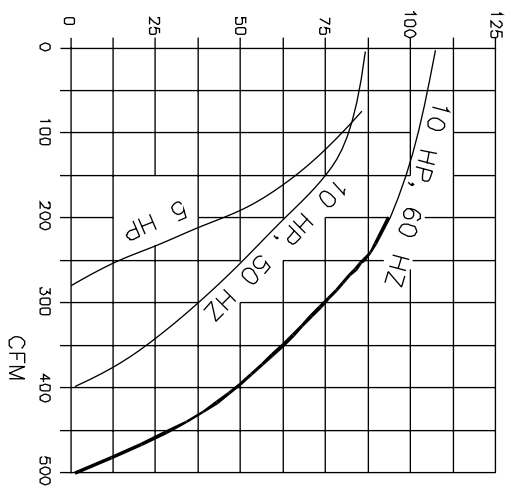
- (1) 25 lb. external adsorber module, refillable

**OTHER OPTIONS:**

- Pressure gauge kit; indicates filter changes
- 5 Gal. hopper and stand
- Muffler
- Auto Clean

\* AFS FILTER EFFICIENCIES BASED ON ASHRAE 52-76 TEST METHOD

U.S./IMPERIAL - VACUUM (INCH H<sub>2</sub>O)



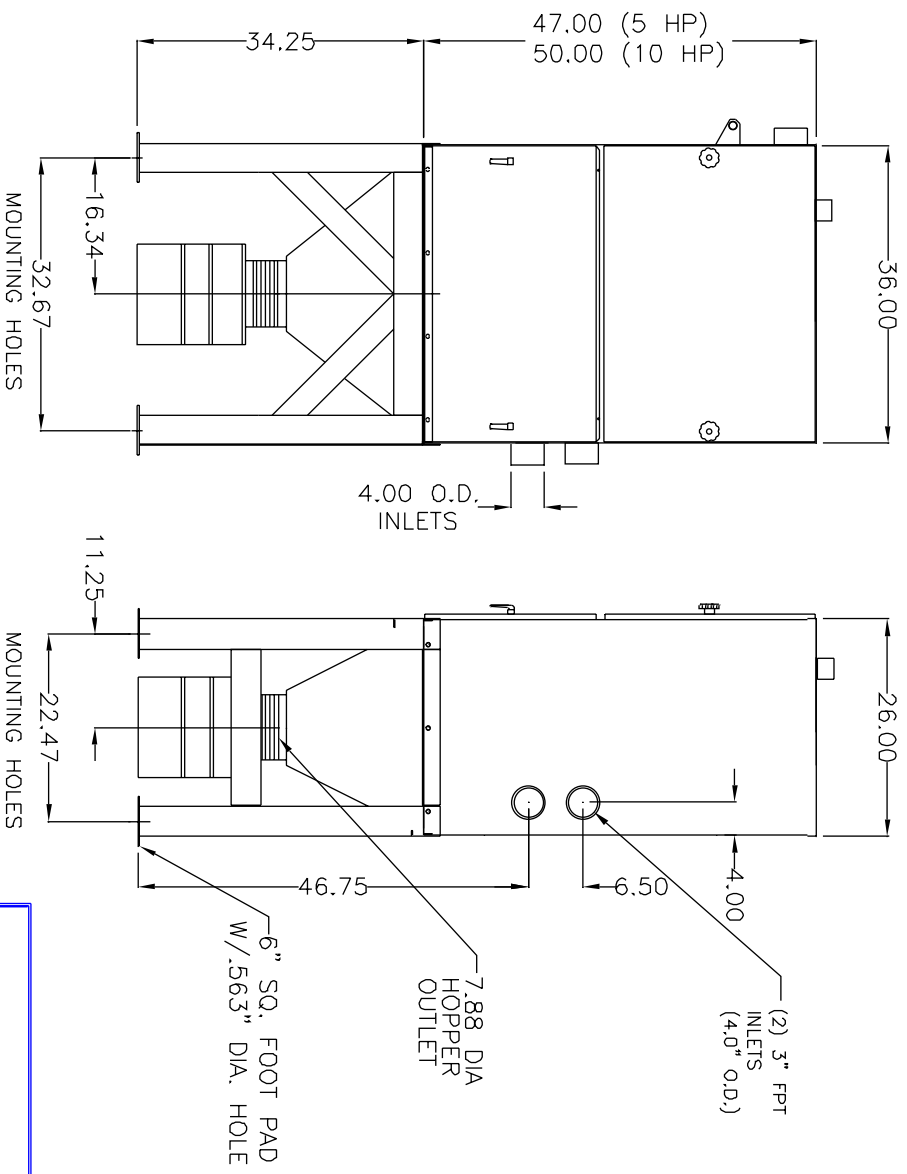
**NOTES:**  
Items designated as  are included in this proposal

THE DEVICE DEPICTED AND DESCRIBED HEREON EMBODIES PROPRIETARY INFORMATION OWNED BY AIRFLOW SYSTEMS, INC. ALL DESIGN, MANUFACTURING, REPRODUCTION, SALES, AND PATENT RIGHTS RESERVED EXCEPT WHERE EXPLICIT RIGHTS IS GRANTED IN WRITING.

**Diversified Air Systems, Inc.**  
Phone: 800-264-8958

DRAWN BY CB	TITLE MODEL V410 (DUAL CARTRIDGE)
DATE 1-20-99	PAGE 1 OF 2
SCALE	DRAWING NO.: V410SPEC (32-1975/G)

OPTIONAL 5 GAL. HOPPER  
AND STAND W/CONTAINER



NOTES:

FRONT VIEW

SIDE VIEW

THE DEVICE DEPICTED AND DESCRIBED HEREON EMBODIES PROPRIETARY INFORMATION OWNED BY AIRFLOW SYSTEMS, INC. ALL DESIGN, MANUFACTURING, REPRODUCTION, SALES, AND PATENT RIGHTS REGARDING THIS DEVICE OR DRAWING ARE RESERVED EXCEPT WHERE EXPLICIT RIGHT IS GRANTED IN WRITING.

<p><b>Diversified Air Systems, Inc.</b> Phone: 800-264-8958</p>	
<p>DRAWN BY CB</p>	<p>TITLE MODEL V410</p>
<p>DATE 1-20-99</p>	<p>PAGE 2 OF 2</p>
<p>SCALE</p>	<p>DRAWING NO.: V410SPEC (32-1975/G)</p>

