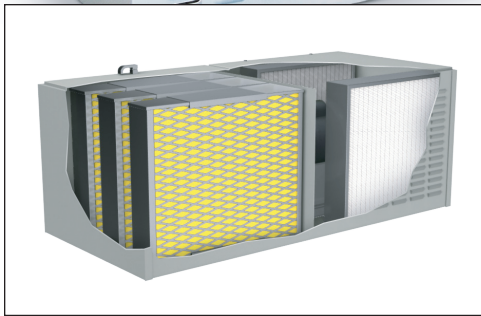


MPH10



Options

Pressure Gauge Kit:

Monitors air pressure at inlet for reduced static pressure; indicates need for filter cleaning, ensures optimum energy efficiency.

High-efficiency and Application-specific After Filters:

Including: 99.97% HEPA or MERV 14 rated, rigid-style, washable cartridge filters.

Source Capture Plenum:

Add high-efficiency source-point collection or ducting; plenum attachment simplifies connectivity of ducts or collection arms.

Drain Loop Kit:

Simplifies collection and reclamation of captured oil mist while providing drain line air seal.

Side Panel Inlet:

Adaptable to virtually any facility or equipment configuration, side panel inlets simplify system installation and start up.

Features & Benefits

95% Collection Efficiency at 1 to 4 Microns:

Designed specifically for oil mist, the Airflow Systems, Inc. MistPlus[®] II filter provides up to 95% filtration efficiency of 1 to 4 micron mist droplets. The proprietary, V-shaped filter design aids in drainage of collected mist; extending filter life.

MERV 14 After-filter Collection Efficiency:

(2) MERV 14 rated after-filters provides an additional contaminant barrier. Collection efficiency is increased; filter life is extended.

Sealed Cabinet Construction:

16/18 gauge steel, seam-sealed cabinet eliminates contaminant escape common with stitch-welded or bolt-on panel designs.

Ultra-Seal[®] Filter Placement System:

Ensures quick and accurate filter replacement; eliminates contaminant bypass of filters, reduces equipment and facility maintenance.

Low-profile Cabinet Design:

Horizontal orientation allows for installation directly above the machine tool—even in low ceiling applications; saves floor space, simplifies filter access.

Superior Liquid Drainage:

10-inch bottom inlet and 2-inch deep sump enable high-volume, 24-hour, 7-day operation; no manual handling of liquids.

Extended Filter Life, Reduced Maintenance:

MistPlus[®] II filter design reduces dirt loading and filter maintenance; extending filter life up to two years.

Direct-Drive Blower:

Energy-efficient; superior air flow and higher static pressure operation; no belts or pulleys to replace, acoustic-lined cabinet.

Specifications

Construction:

16/18 gauge, zinc-coated, welded steel cabinet; powder coated finish.

Blower Packages (HP):

1.0 std., .50 opt.

Noise Level (dBA):

77.5

Electrical:

1.0 HP - 115/1/60, 12 amps, std.

1.0 HP - 208-230/460/3/60, 3.7-3.6/1.8 amps, opt.

.50 HP - 115/1/60, 7.2 amps, opt.

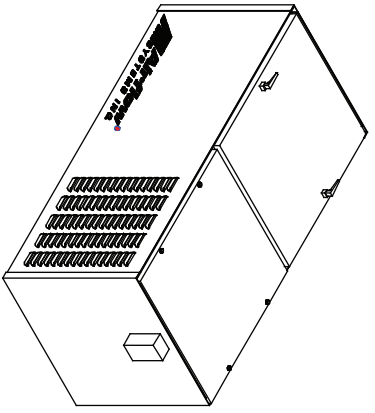
.50 HP - 208-230/460/3/60, 2.7-2.6/1.3 amps, opt.

Nominal Air Flow (CFM):

1,000/500

Weight (lbs.):

191



SPECIFICATIONS:

CONSTRUCTION:

16/18 Gauge welded steel cabinet with Powder-Cool finish. Unit includes a top filter access door, Ultra-Seal filter mounting system, an acoustically lined blower cabinet with access panel, a bottom inlet collar, and a 10' power cord. Three phase units wired to a junction box; circuit and motor overload protection by others.

WEIGHT:

191 lbs.

AIRFLOW:

1000 CFM (1 HP), std.
500 CFM (1/2 HP), opt.

NOISE:

77.5 dBA (with after-filters)

ELECTRICAL:

- 1 HP 115/1/60, 12 amps, std.
- 1 HP 208-230/460/3/60, 3.7-3.6/1.8 amps, opt.
- 1/2 HP 115/1/60, 7.2 amps, opt
- 1/2 HP 208-230/460/3/60, 2.7-2.6/1.3 amps, opt.

MAIN FILTERS:

(3) MistPlus II Filters, std.

AFTER FILTER OPTIONS:

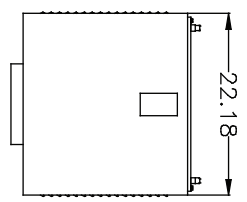
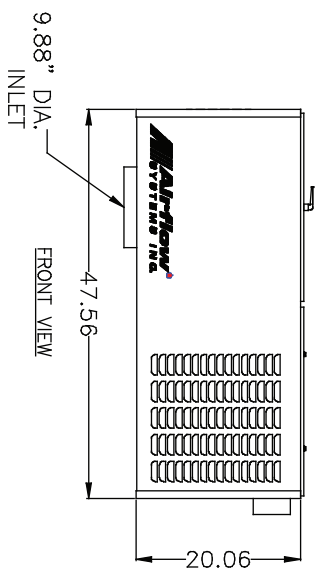
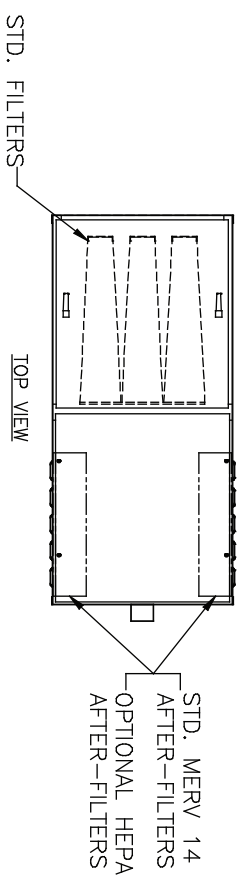
- (2) 4" MERV 14, washable synthetic (17.50 L x 18.50 T x 4.0 D) STD.
- (2) 4" 99.97% HEPA, opt. (17.50 L x 18.50 T x 4.0 D)

OTHER OPTIONS:

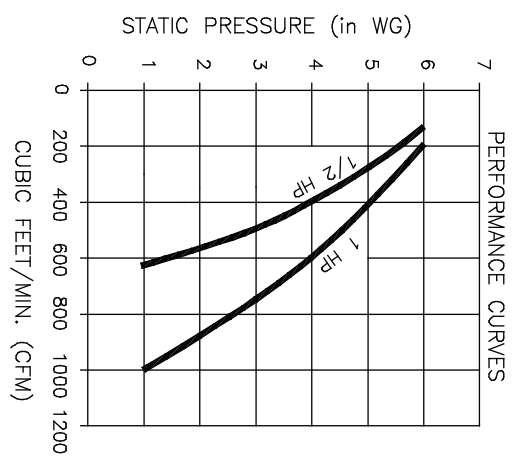
- Pressure gauge kit indicates filter changes
- Optional side inlet (includes drain loop kit)

FIRE SUPPRESSION:

Equipment provided by others



SIDE VIEW

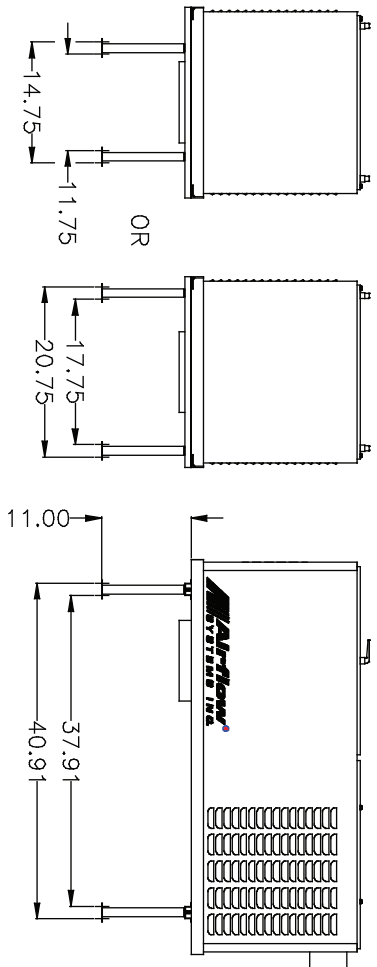


NOTES:

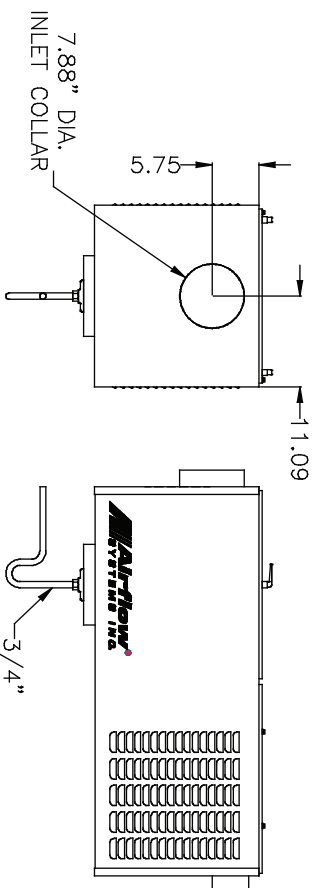
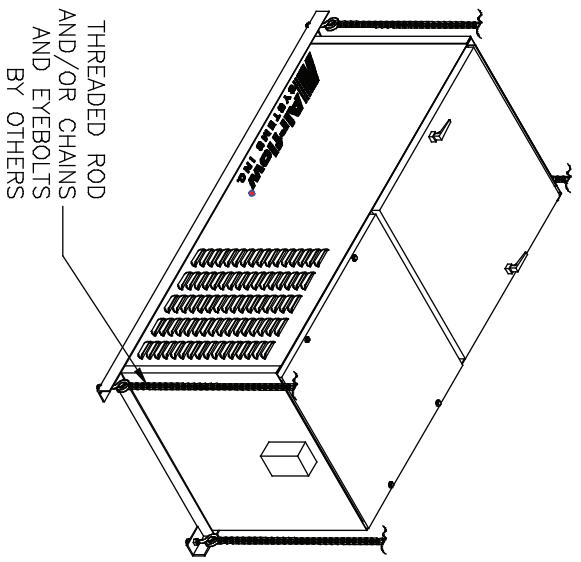
THE DEVICE DEPICTED AND DESCRIBED HEREON EMBODIES PROPRIETARY INFORMATION OWNED BY AIRFLOW SYSTEMS, INC. ALL DESIGN, MANUFACTURING, REPRODUCTION, SALES, AND PATENT RIGHTS REGARDING THIS DEVICE OR DRAWING ARE RESERVED EXCEPT WHERE EXPLICIT RIGHT IS GRANTED IN WRITING.

Diversified Air Systems, Inc.
Phone: 800-264-8958

DRAWN BY CB	TITLE MODEL MPH10
DATE 11-14-08	PAGE 1 OF 2
SCALE	DRAWING NO.: MPH10SPC (84-4521)



LEG KIT OPTION



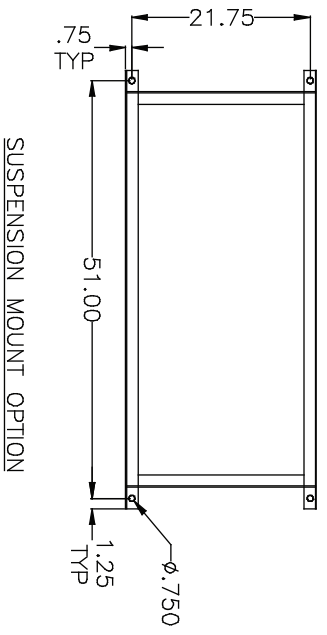
IA OPTION

NOTES:

THE DEVICE DEPICTED AND DESCRIBED HEREON EMBODIES PROPRIETARY INFORMATION OWNED BY AIRFLOW SYSTEMS, INC. ALL DESIGN, MANUFACTURING, REPRODUCTION, SALES, AND PATENT RIGHTS REGARDING THIS DEVICE OR DRAWING ARE RESERVED EXCEPT WHERE EXPLICIT RIGHT IS GRANTED IN WRITING.

Diversified Air Systems, Inc.
 Phone: 800-264-8958

DRAWN BY CB	TITLE MODEL MPH10
DATE 11-14-08	PAGE 2 OF 2
SCALE	DRAWING NO.: MPH10SPC (84-4521)



SUSPENSION MOUNT OPTION