

MPH8



Options

Pressure Gauge Kit:

Monitors air pressure at inlet for reduced static pressure; indicates need for filter cleaning, ensures optimum energy efficiency.

High-efficiency and Application-specific After Filters:

Including: 99.97% HEPA, 95% DOP, external AD odor control, activated charcoal, and Km04 filtration.

Source Capture Plenum:

Add high-efficiency source-point collection or ducting; plenum attachment simplifies connectivity of ducts or collection arms.

Drain Loop Kit:

Simplifies collection and reclamation of captured oil mist while providing drain line air seal.

Additional or Non-standard Inlets:

Designed to accommodate application-specific requirements; cabinet can be adapted to receive a variety of inlet configurations.

Features & Benefits

95% Collection Efficiency at 1 to 4 Microns:

Designed specifically for oil mist, the Airflow Systems, Inc.[®] MistPlus[®] II filter provides up to 95% filtration efficiency of 1 to 4 micron mist droplets. The proprietary, V-shaped filter design aids in drainage of collected mist; extending filter life.

Sealed Cabinet Construction:

18 gauge steel, seam-sealed cabinet eliminates contaminant escape common with stitch-welded or bolt-on panel designs.

Ultra-Seal[®] Filter Placement System:

Ensures quick and accurate filter replacement; eliminates contaminant bypass of filters, reduces equipment and facility maintenance.

Low-profile Cabinet Design:

Horizontal orientation allows for installation directly above the machine tool—even in low ceiling applications; saves floor space.

Superior Liquid Drainage:

10-inch bottom inlet and 2-inch deep sump enable high-volume, 24-hour, 7-day operation; no manual handling of liquids.

Extended Filter Life, Reduced Maintenance:

MistPlus[®] II filter design reduces dirt loading and filter maintenance; extending filter life up to two years.

Direct-Drive Blower:

Energy-efficient; superior air flow and higher static pressure operation; no belts or pulleys to replace, acoustic-lined cabinet.

Specifications

Construction:

18 gauge, zinc-coated, welded steel cabinet; powder coated finish.

Blower Packages (HP):

1.0 std., .75 opt.

Noise Level (dBA):

75

Electrical:

1.0 HP - 115/1/60, 12 amps, std.

.75 HP - 115/208-230/1/60, 9.8/4.9 amps, opt.

.75 HP - 208-230/460/3/60, 2.7-2.6/1.3 amps, opt.

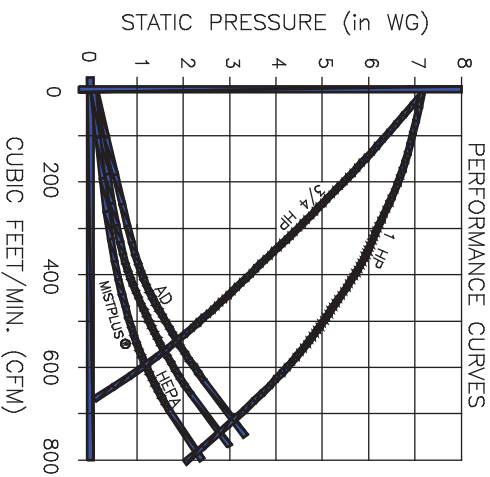
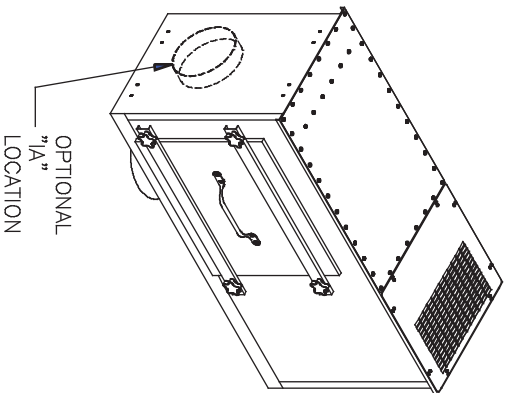
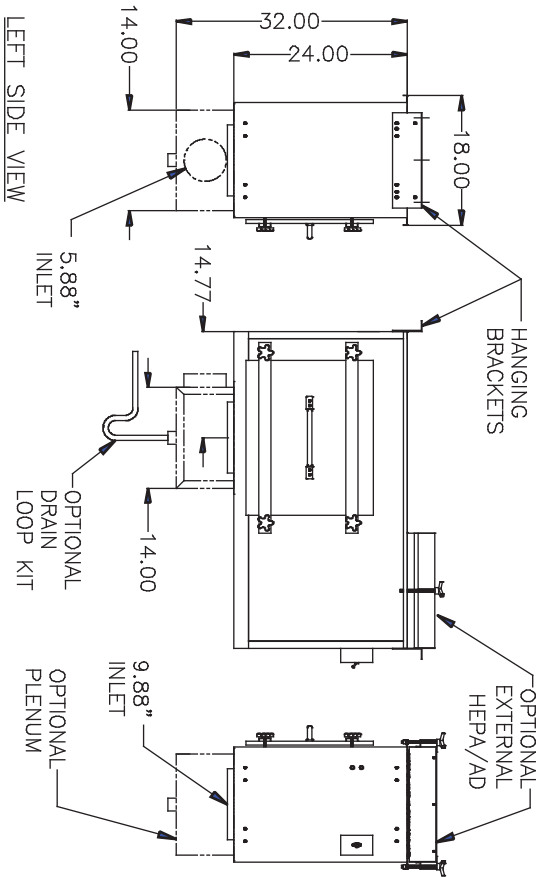
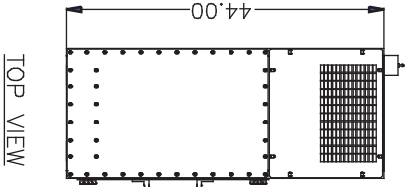
1.0 HP - 208-230/460/3/60, 3.7-3.6/1.8 amps opt.

Nominal Air Flow (CFM):

800

Weight (lbs.):

170



SPECIFICATIONS:

CONSTRUCTION:

18 Gauge welded steel cabinet with Powder-Coot finish. Includes filter access door on right side for right hand applications. Ultra-Seal® filter mounting system, acoustically lined B.I. blower cabinet, 2" deep sump with a 10" bottom inlet collar, on-off switch, and a 10' power cord (115V). Three phase units wired to a junction box; circuit and motor overload protection by others.

WEIGHT: 170 lbs.
AIRFLOW: 800 CFM
NOISE: 75 dBA

ELECTRICAL:

- 1 HP 115/1/60, 12 amps, std.
- 1 HP 208-230/460/3/60, 3.7-3.6/1.8 amps, opt.
- 3/4 HP 115/208-230/1/60, 9.8/4.9 amps, opt.
- 3/4 HP 208-230/460/3/60, 2.7-2.6/1.3 amps, opt.

MAIN FILTERS:

- (2) MistPlus® Filters
- (2) MistPlus® II Filters

UNIT EFFICIENCY:

95% Minimum on U.N.C. Oil Mist Test

AFTER FILTERS:

- (1) External HEPA filter, 99.97%, Opt.
- (1) External DOP filter, 95%, Opt.
- (1) External adsorber, Opt.
- (1) Activated Charcoal, Opt.
- (1) KMNO₄, Opt.

OTHER OPTIONS:

- Pressure gauge kit indicates filter changes
- Source capture plenum (side inlet)
- Drain loop kit
- Additional Inlet

FIRE SUPPRESSION: Equipment provided by others.

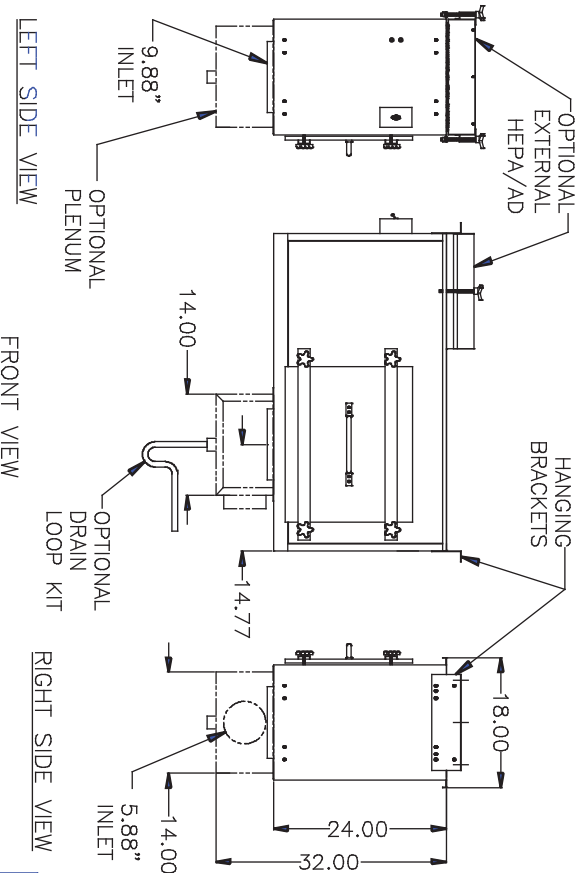
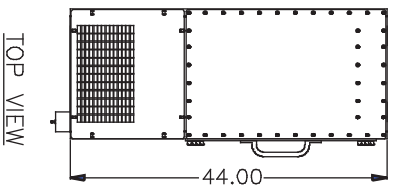
NOTES:
 Items designated as are included in this proposal.

THE DEVICE DEPICTED AND DESCRIBED HEREON EMBODIES PROPRIETARY INFORMATION OWNED BY AIRFLOW SYSTEMS, INC. ALL DESIGN, MANUFACTURING, REPRODUCTION, SALES, AND PATENT RIGHTS REGARDING THIS DEVICE OR DRAWING ARE RESERVED EXCEPT WHERE EXPLICIT RIGHT IS GRANTED IN WRITING.

Diversified Air Systems, Inc.
 10801 Electron Drive, Louisville, KY 40299
 P: 502-267-0333 F: 502-267-4241 E: info@divers-air.com

DRAWN BY: CB
 DATE: 1-21-08
 SCALE:

TITLE: MODEL MPH8v.2,
 RIGHT-HAND
 DRAWING NO.: MPH8RHAND (84-4414)

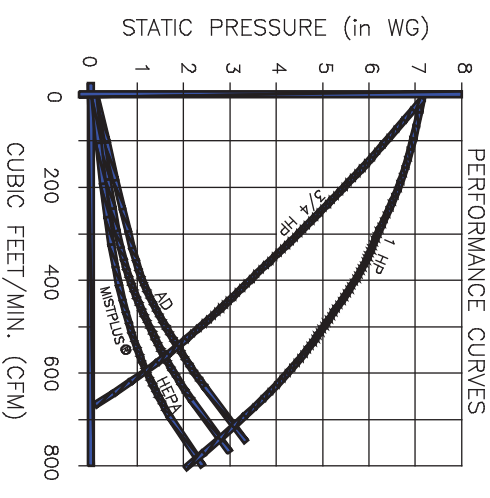
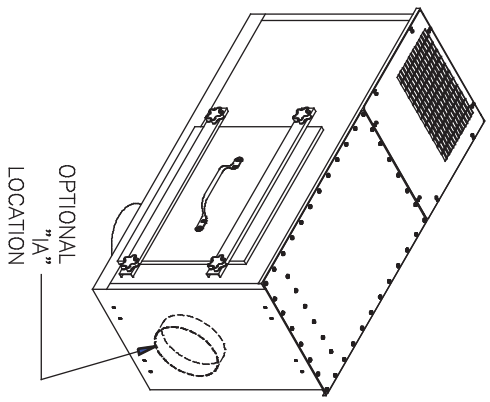


NOTES:
 Items designated as are included in this proposal.

SPECIFICATIONS:

- CONSTRUCTION:**
 18 Gauge welded steel cabinet with Powder-Cool finish. Includes filter access door on left side for left hand applications. Ultra-Seal® filter mounting system, acoustically lined Bl. blower cabinet, 2" deep sump with a 10" bottom inlet collar, on-off switch, and a 10' power cord (115V). Three phase units wired to a junction box; circuit and motor overload protection by others.
- WEIGHT:** 170 lbs.
AIRFLOW: 800 CFM
NOISE: 75 dBA
- ELECTRICAL:**
- 1 HP 115/1/60, 12 amps, std.
 - 1 HP 208-230/460/3/60, 3.7-3.6/1.8 amps, opt
 - 3/4 HP 115/208-230/1/60, 9.8/4.9 amps, opt.
 - 3/4 HP 208-230/460/3/60, 2.7-2.6/1.3 amps, opt.

- MAIN FILTERS:**
- (2) MistPlus® Filters
 - (2) MistPlus® II Filters
- UNIT EFFICIENCY:** 95% Minimum on U.N.C. Oil Mist Test
- AFTER FILTERS:**
- (1) External HEPA filter, 99.97%, Opt.
 - (1) External DOP filter, 95%, Opt.
 - (1) External adsorber, Opt.
 - (1) Activated Charcoal, Opt.
 - (1) KMNO₄, Opt.
- OTHER OPTIONS:**
- Pressure gauge kit indicates filter changes
 - Source capture plenum (side inlet)
 - Drain loop kit
 - Additional Inlet
- FIRE SUPPRESSION:** Equipment provided by others.



THE DEVICE DEPICTED AND DESCRIBED HEREON EMBODIES PROPRIETARY INFORMATION OWNED BY AIRFLOW SYSTEMS, INC. ALL DESIGN, MANUFACTURING, REPRODUCTION, SALES, AND PATENT RIGHTS REGARDING THIS DEVICE OR DRAWING ARE RESERVED EXCEPT WHERE EXPLICIT RIGHT IS GRANTED IN WRITING.

Diversified Air Systems, Inc.
 10801 Electron Drive, Louisville, KY 40299
 P: 502-267-0333 F: 502-267-4241 E: info@divers-air.com

DRAWN BY: CB
 DATE: 1-21-08
 SCALE: _____

TITLE: MODEL MPH8v.2,
 LEFT-HAND
 DRAWING NO.: MPH8LHAND (84-4414)