

# HC-4 Dust Collector



## Features & Benefits

---

- **Dual 10-ft. E-Z Arm® High Flow Extractors:**  
Increases collection efficiency over ambient systems.
- **Class II Direct-Drive Blower:**  
Improves collection efficiency, increases reliability.
- **Non-electrostatic operation:**  
High reliability, low maintenance.
- **Vibra-Pulse® Filter Cleaning System:**  
Cleans filters 75% more effectively than reverse pulse systems.
- **Auto-Clean off-line filter cleaning:**  
Automatically cleans filters when unit is shut off.

## Dimensions

---

<b>Length:</b>	77.00"
<b>Height:</b>	32.00"
<b>Depth:</b>	28.00"

## Options

---

- **Pressure Gauge Kit:**  
Indicates when filters require cleaning.
- **Silencer:**  
Reduces noise by 4 dBA.
- **14-ft. E-Z Arm® High Flow Extractors:**  
Replaces standard 10-ft. E-Z Arm® Extractors for peak system performance.
- **(2) 8-in. Dia. Inlets:**  
Simplifies ducted application installation (less dual arms.)

## Specifications

---

- Construction:**  
14 and 16 ga. steel cabinet, powder coated
- Blower Pkg (HP):**  
3.0
- Noise Level (dBA):**  
82/78 silencer
- Electrical:**  
3.0 HP - 208-230/460/575/3/60, 8.6/4.3/3 amps, std;  
2.0 HP - 190/380/3/50, 7.2/3.6 amps
- Nominal CFM (in.):**  
2000, 60 Hz  
1750, 50 Hz
- Weight (lbs.):**  
580

## SPECIFICATIONS:

**CONSTRUCTION:**

16 and 14 Gauge steel cabinet finished with a 2-part chemical and oil resistant paint. Includes side access panel to motor, removable endcaps for easy access to filters, (2) hoppers with a 7.88 diameter outlet, (2) 10" E-Z Arms, and a direct driven, ball bearing, BI blower w/4-way adjustable airfoil blade exhaust grille. Motor wired to junction box outside unit. Motor starters/disconnects not included.

**WEIGHT:**

580 lbs. SHIP WT: 815 lbs.

**AIRFLOW:**

2000 CFM w/arms or Optional 8" inlets  
1800 CFM w/external HEPA/AD

**NOISE:**

82 dBA / 78 with silencer

**ELECTRICAL:**

- 3 HP 208-230/460/575/3/60, 9.2-8.0/4/3 amps, std.
- 3 HP 220/380/440/3/50, 8.4/4.7/4.2 amps, std.

**FIRE SUPPRESSION:**

Equipment provided by others.

**MAIN FILTERS:**

- (4) 150 ft<sup>2</sup> CLEAN 2<sup>®</sup> cartridges, std.
- (4) 75 ft<sup>2</sup> Fiber Dust<sup>®</sup> cartridges, opt.
- (4) Spunbond cartridges, opt.

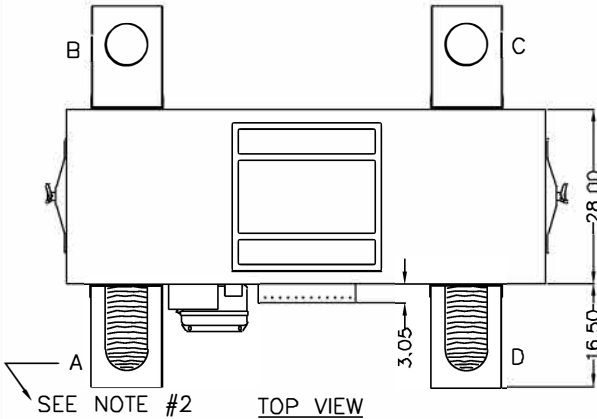
**OTHER OPTIONS:**

- Pressure gauge kit indicates filter changes
- Dual 14 ft. E-Z Arms™
- Duct connection, 8" inlets in place of E-Z Arms™
- Silencer
- External AD
- External HEPA
- Light Kit

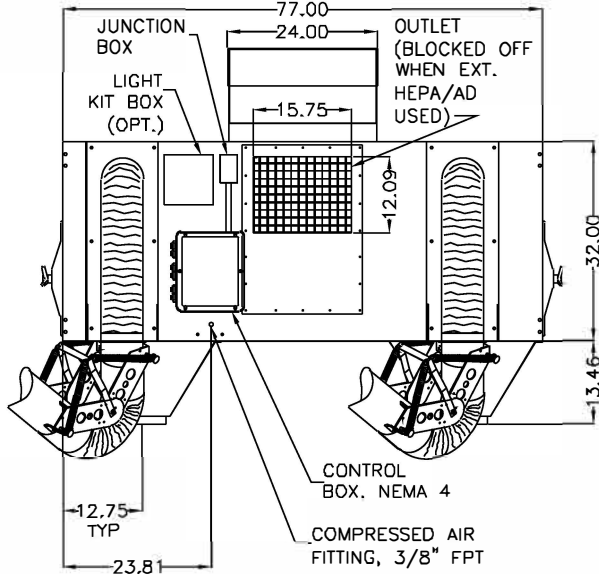
**SPECIAL NOTES:**

Compressed air filter provided by others.

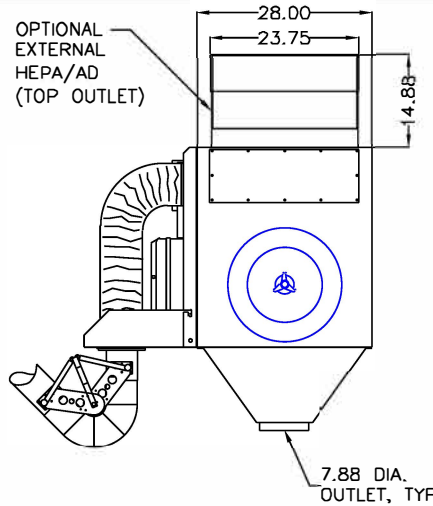
\* AFS FILTER EFFICIENCIES BASED ON ASHRAE 52-76 TEST METHOD



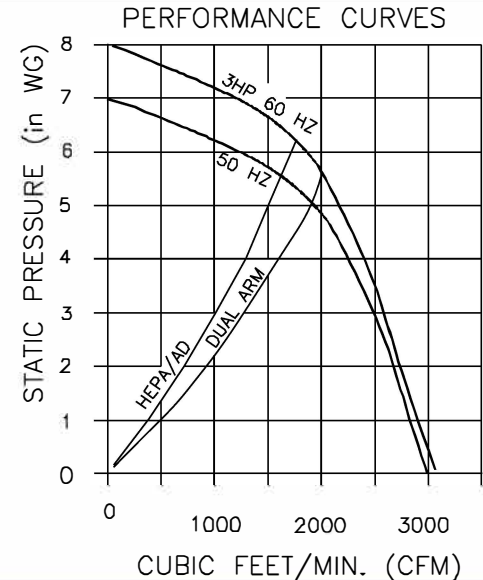
SEE NOTE #2 TOP VIEW



SIDE VIEW



END VIEW



**NOTES:**

1. Items designated as  are included in this proposal.
2. A & D standard locations, B & C optional

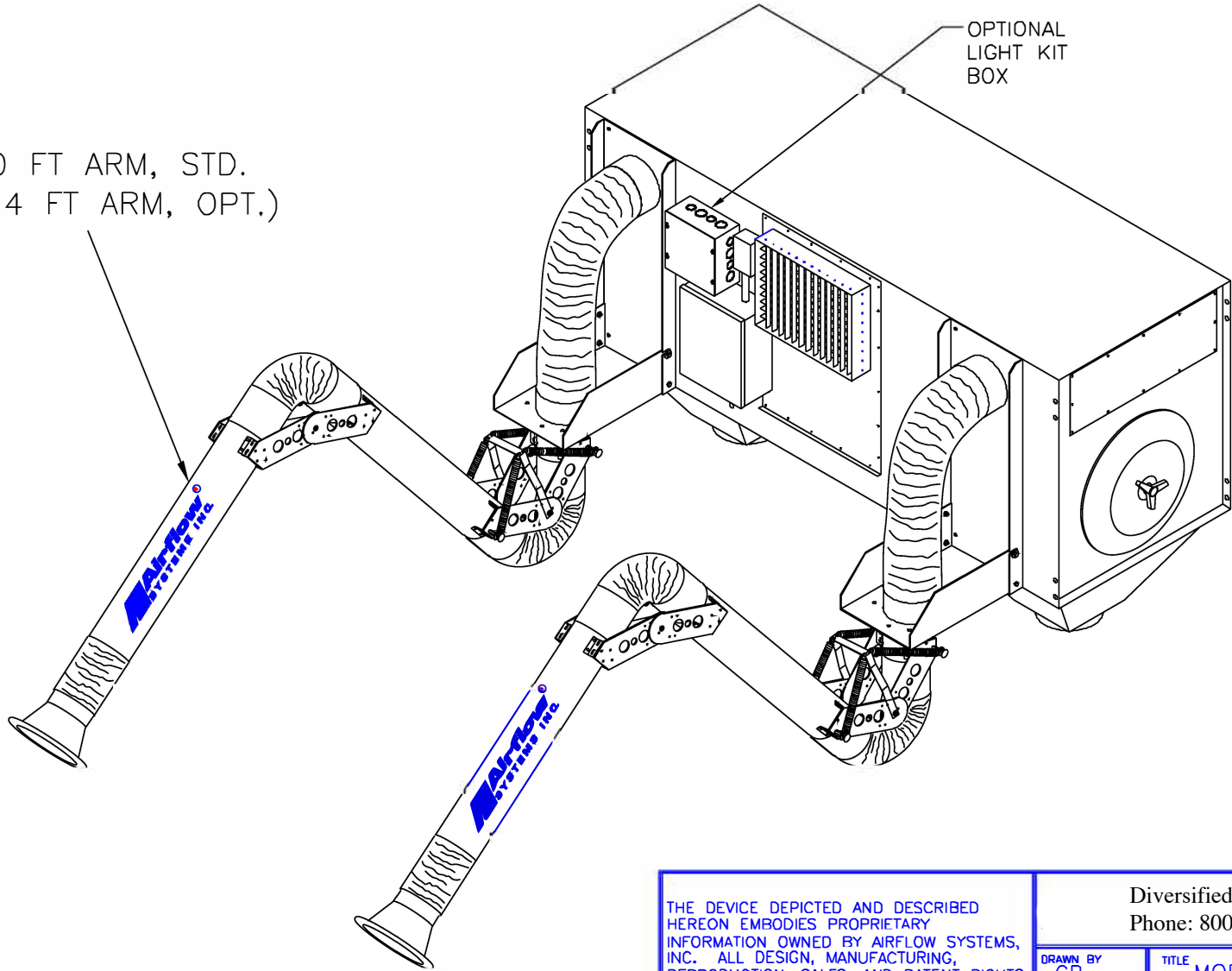
THE DEVICE DEPICTED AND DESCRIBED HEREON EMBODIES PROPRIETARY INFORMATION OWNED BY AIRFLOW SYSTEMS, INC. ALL DESIGN, MANUFACTURING, REPRODUCTION, SALES, AND PATENT RIGHTS REGARDING THIS DEVICE OR DRAWING ARE RESERVED EXCEPT WHERE EXPLICIT RIGHT IS GRANTED IN WRITING.

Diversified Air Systems, Inc  
Phone: 800-264-8958

DRAWN BY CB	TITLE MODEL HC-4
DATE 7-26-99	PAGE 1 OF 2
SCALE	DRAWING NO.: HC-4NEW (29-2248/B)

10 FT ARM, STD.  
(14 FT ARM, OPT.)

OPTIONAL  
LIGHT KIT  
BOX



NOTES:

<p>THE DEVICE DEPICTED AND DESCRIBED HEREON EMBODIES PROPRIETARY INFORMATION OWNED BY AIRFLOW SYSTEMS, INC. ALL DESIGN, MANUFACTURING, REPRODUCTION, SALES, AND PATENT RIGHTS REGARDING THIS DEVICE OR DRAWING ARE RESERVED EXCEPT WHERE EXPLICIT RIGHT IS GRANTED IN WRITING.</p>		<p>Diversified Air Systems, Inc Phone: 800-264-8958</p>	
<p>DRAWN BY CB</p>	<p>TITLE MODEL HC-4</p>	<p>DATE 7-26-99</p>	<p>PAGE 2 OF 2</p>
<p>SCALE</p>	<p>DRAWING NO.: HC-4NEW (29-2248/B)</p>		